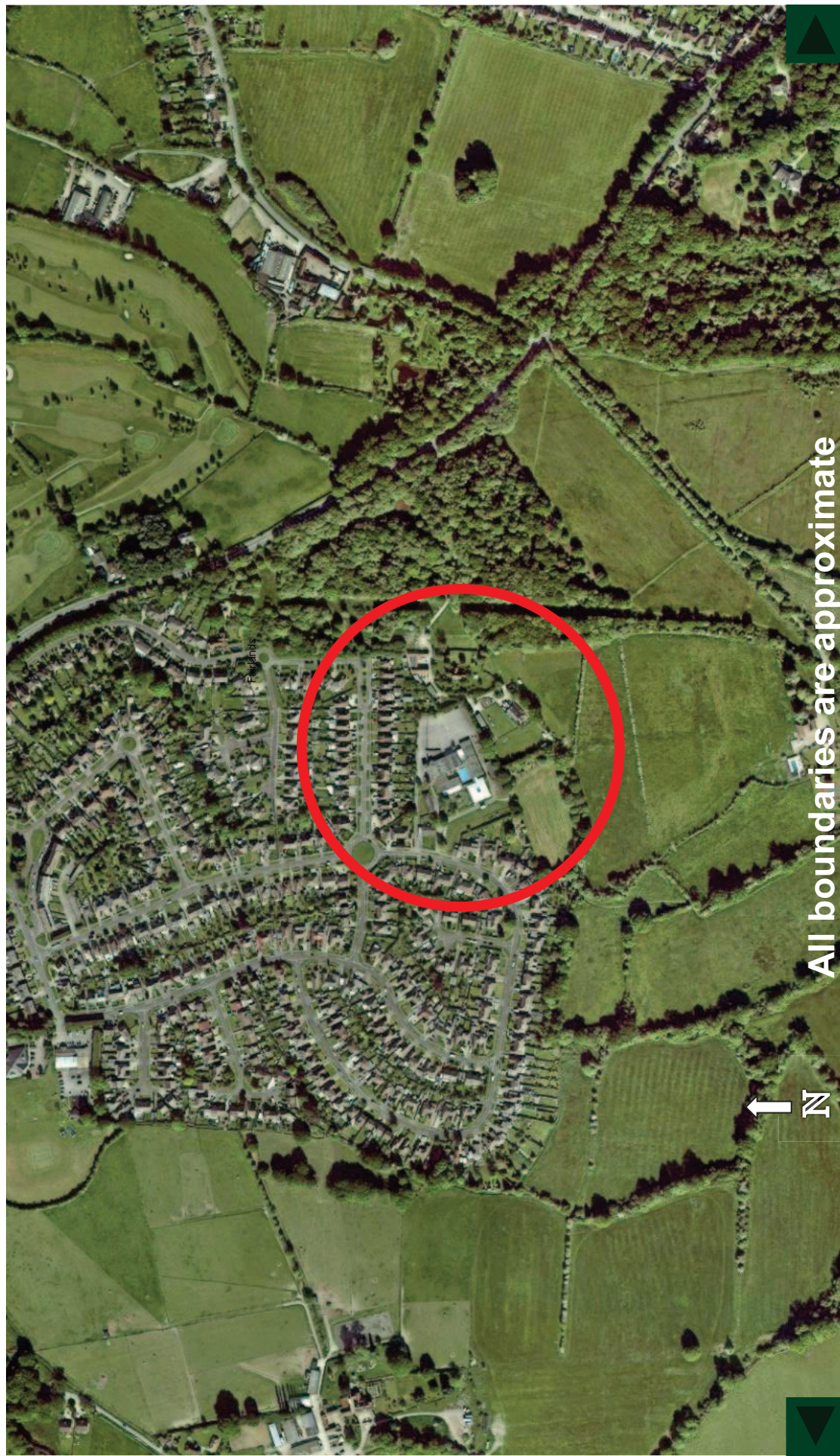




2012-13 Aerial Photos

Aerial 1 : Land at Worplesdon Primary School



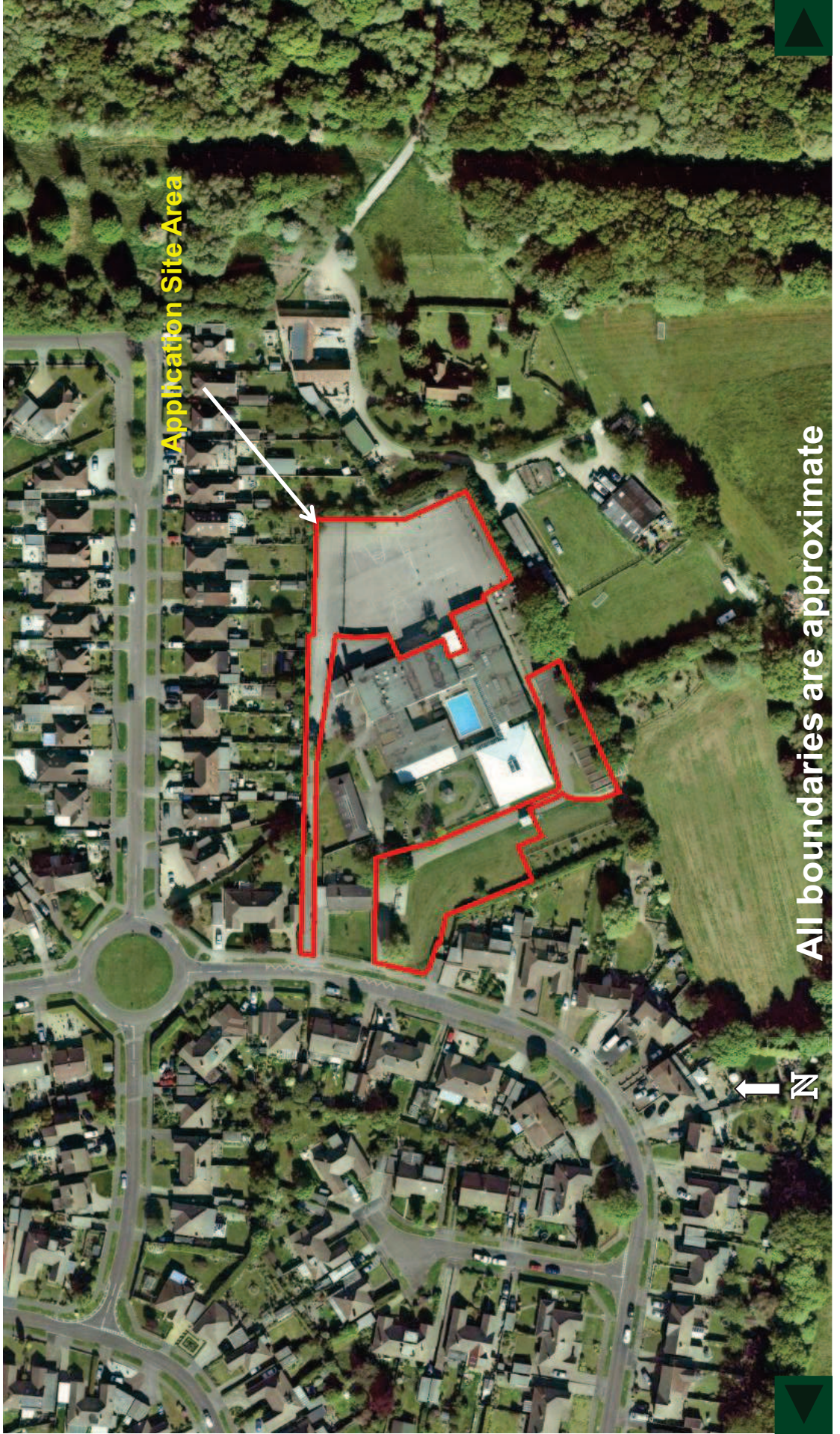
All boundaries are approximate

2012-13 Aerial Photos



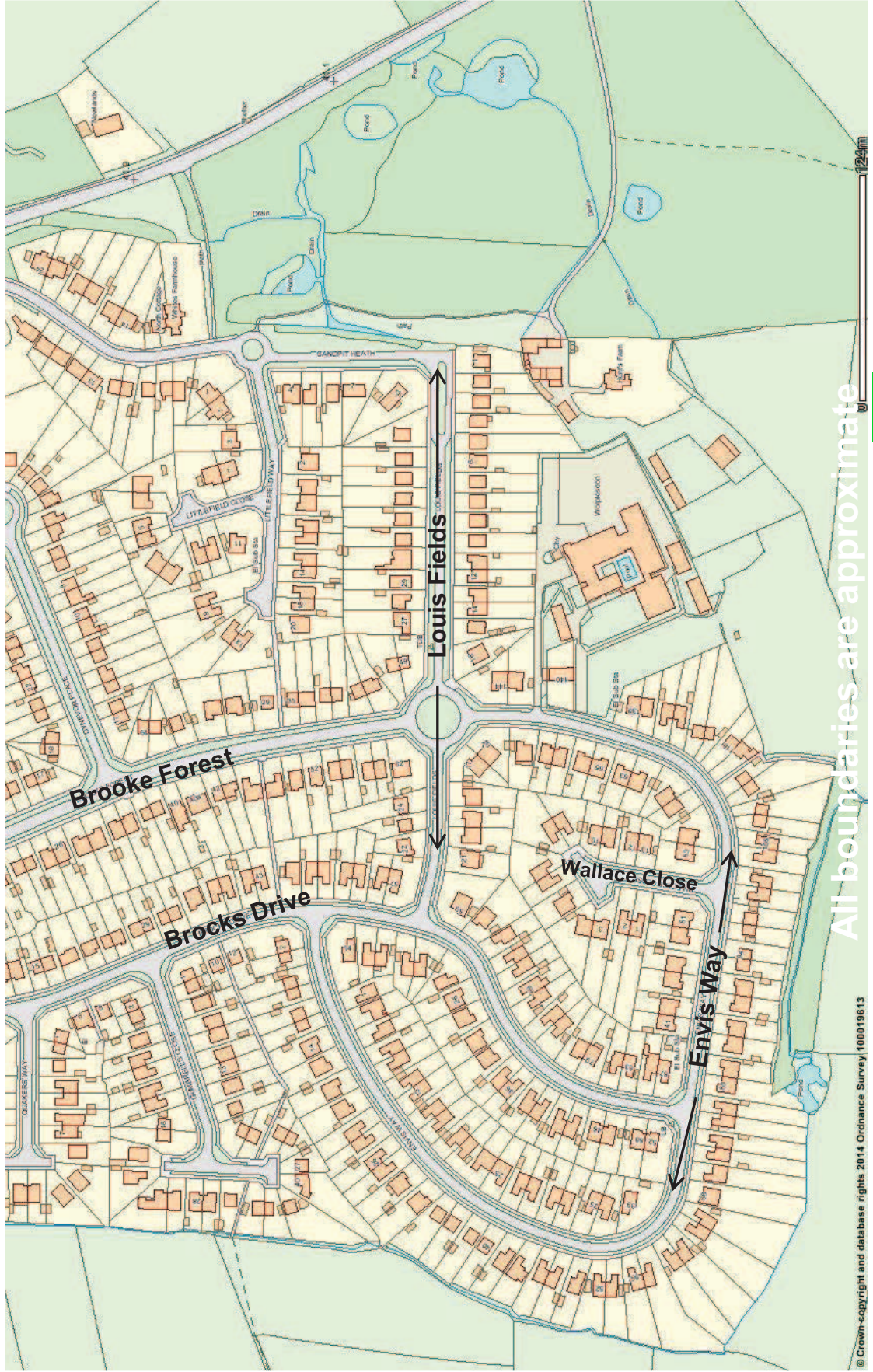
SURREY

Aerial 2 : Land at Worplesdon Primary School



All boundaries are approximate

Street Map



All boundaries are approximate



Figure 1 : Looking southeast from location of hall extension towards location of teaching block, with open countryside beyond



Figure 2 : View looking west from location of teaching block, showing part of hall on right and a modular building to be removed





Figure 3 : Looking northwest from location of teaching block towards houses in Louis Fields



Figure 4 : View to north from the same location



Figure 5 : Looking southwest towards location
of hall extension



Figure 6 : Looking east towards the two modular buildings to be removed



Figure 7 : View to the west towards new vehicular entrance on Envis Way showing willow tree



Figure 8 : Looking south towards location of proposed parking area with modular building on left





Figure 9 : View to the south across the playing fields to the open countryside

