



2012-13 Aerial Photos

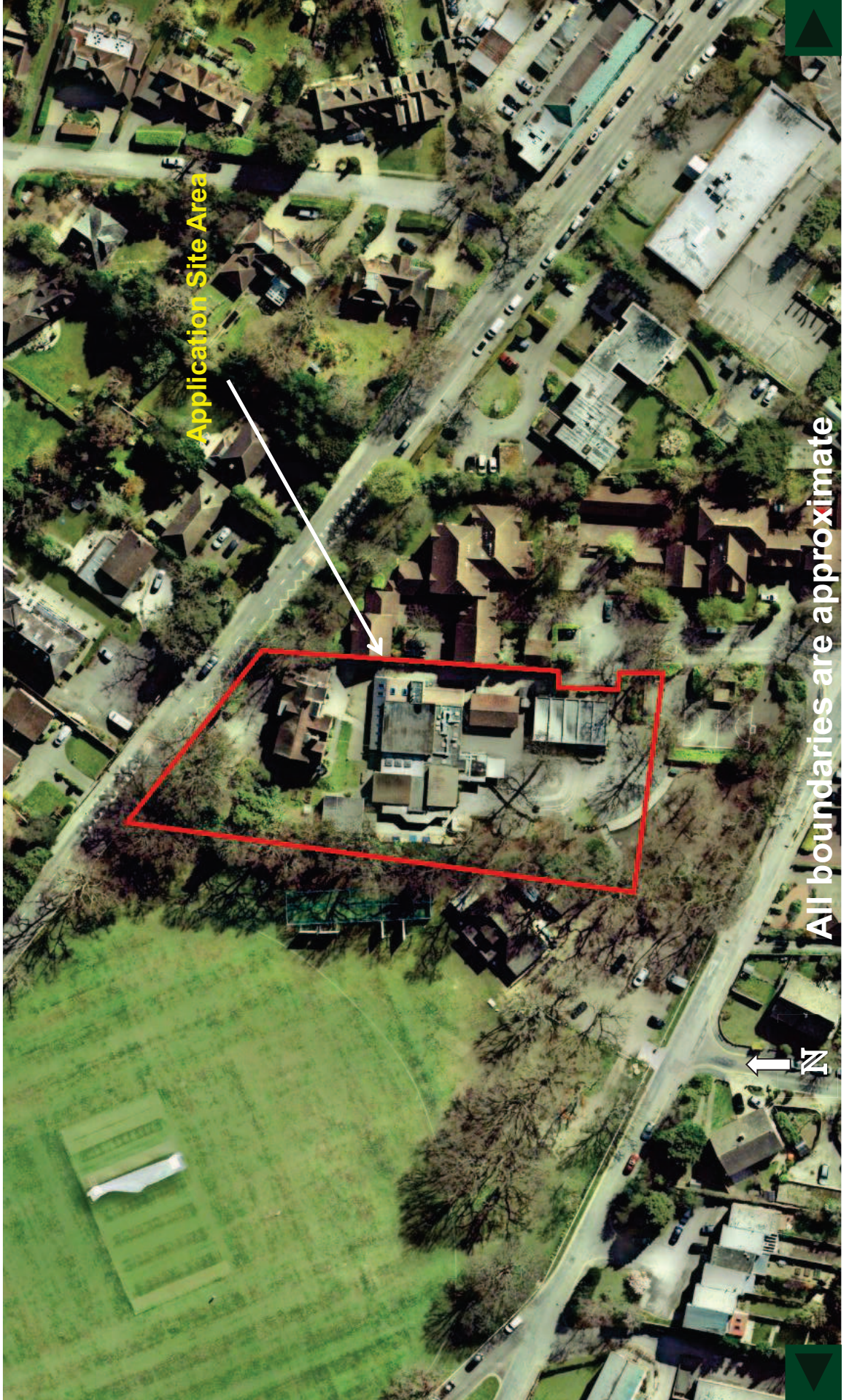
Aerial 1 : Land at Manby Lodge Infant School





2012-13 Aerial Photos

Aerial 2 : Land at Manby Lodge Infant School



All boundaries are approximate

Figure 1 : Lodge building and existing staff car park, viewed from Queens Road





Figure 2 : North elevation of existing main building, location for single story extension, looking south east



Figure 3 : Existing detached classroom building, site of proposed two storey extension, looking east towards Barrington Lodge



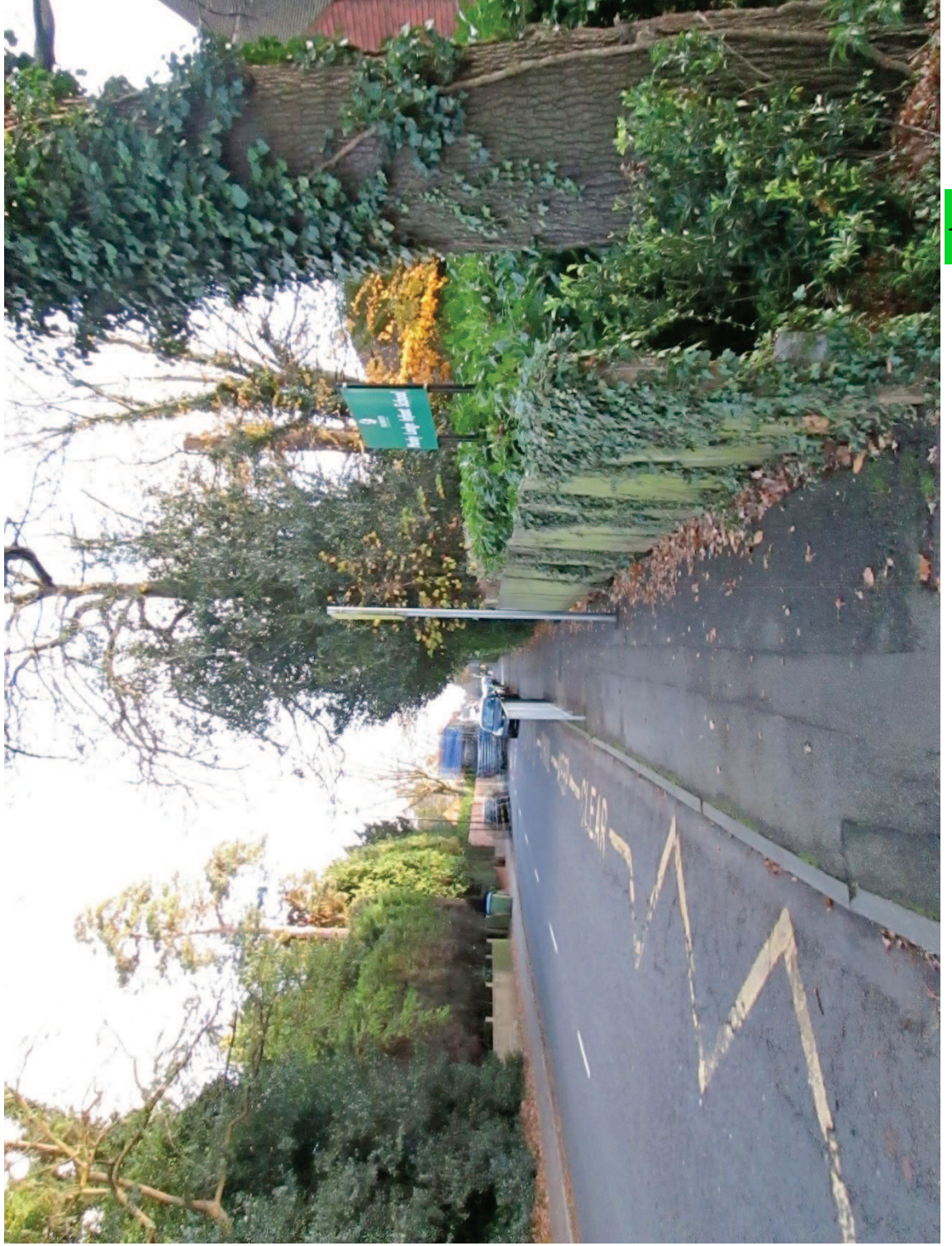


Figure 4 : Eastern boundary of school site, with Barrington Lodge on left, and location for two storey extension on right





Figure 5 : Queens Road frontage of school



This page is intentionally left blank