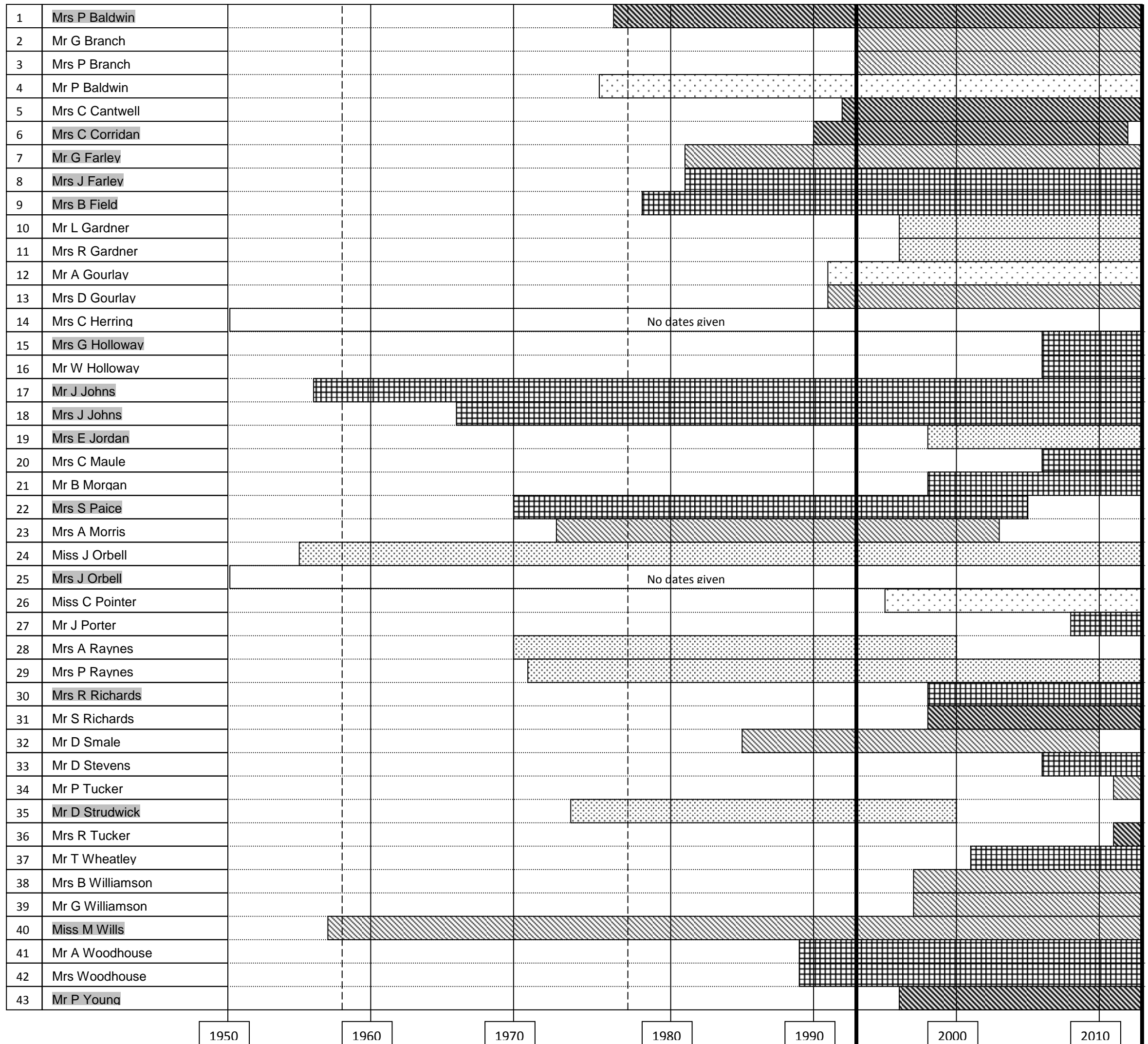


**Annexe C**

**Chart to indicate year and frequency of use on foot of claimed path**



**Key**

|  |  |
|--|--|
|  | Less than once a month (0-11 per year) |
|  | Once or twice a month (12-25 per year) |
|  | 2-4 a month (26-51 per year)           |
|  | Once or twice a week (52-100 per year) |
|  | More than twice a week (100+ per year) |

20 year period runs from 1993 to 2013 (between the solid black lines)

Greyed names indicates user who was also interviewed

Dashed black line indicates date from which Surrey Commons Military Lands Byelaws 1978 came into effect & 20 years preceding.

This page is intentionally left blank