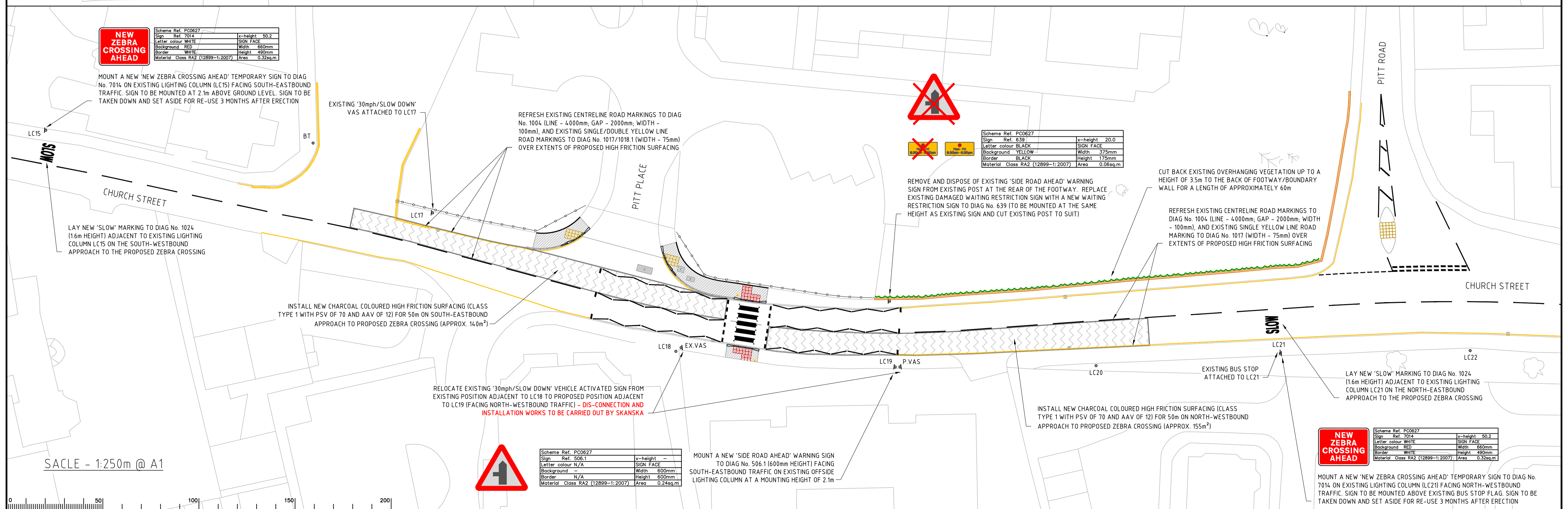


SACLE - 1:100m @ A1



SACLE - 1:250m @ A1

Notes

- DRAWING BASED ON OS DATA. ALL WORKS TO BE SET OUT BY SCC ENGINEER ON SITE PRIOR TO CONSTRUCTION
- ELECTRICAL/LIGHTING WORKS TO BE CARRIED OUT BY SKANSKA
- ALL KERBING TO SCC STANDARD DETAIL DRAWING 1000/01 Rev. C
- TRIMMING/CUT BACK OF VEGETATION IN THE AREA TO BE ADDED TO LOCAL MAINTENANCE SCHEDULE

Rev.	Description	Drwn	Sig.	Date	Chkd	Sig.	Date	Appr	Sig.	Date
A	AMENDMENTS POST RSA 1/2 COMMENTS	SP	SP	18/01/16	SP	SP	18/01/16	JD	JD	18/01/16

Rev.	Description	Drwn	Sig.	Date	Chkd	Sig.	Date	Appr	Sig.	Date
A	AMENDMENTS POST RSA 1/2 COMMENTS	SP	SP	18/01/16	SP	SP	18/01/16	JD	JD	18/01/16

North Point

Scale 1:500m @ A1

Project: CHURCH STREET, EPSOM
PROPOSED ZEBRA CROSSING

Drawing: GENERAL ARRANGEMENT

Project No. PC0627

Contract No. PC0627/03

Revision: A

Classification: DRAFT

SURREY COUNTY COUNCIL

Project No. PC0627

Contract No. PC0627/03

Revision: A

Classification: DRAFT

SHEET 1 OF 1

ITEM 10

A1

This page is intentionally left blank