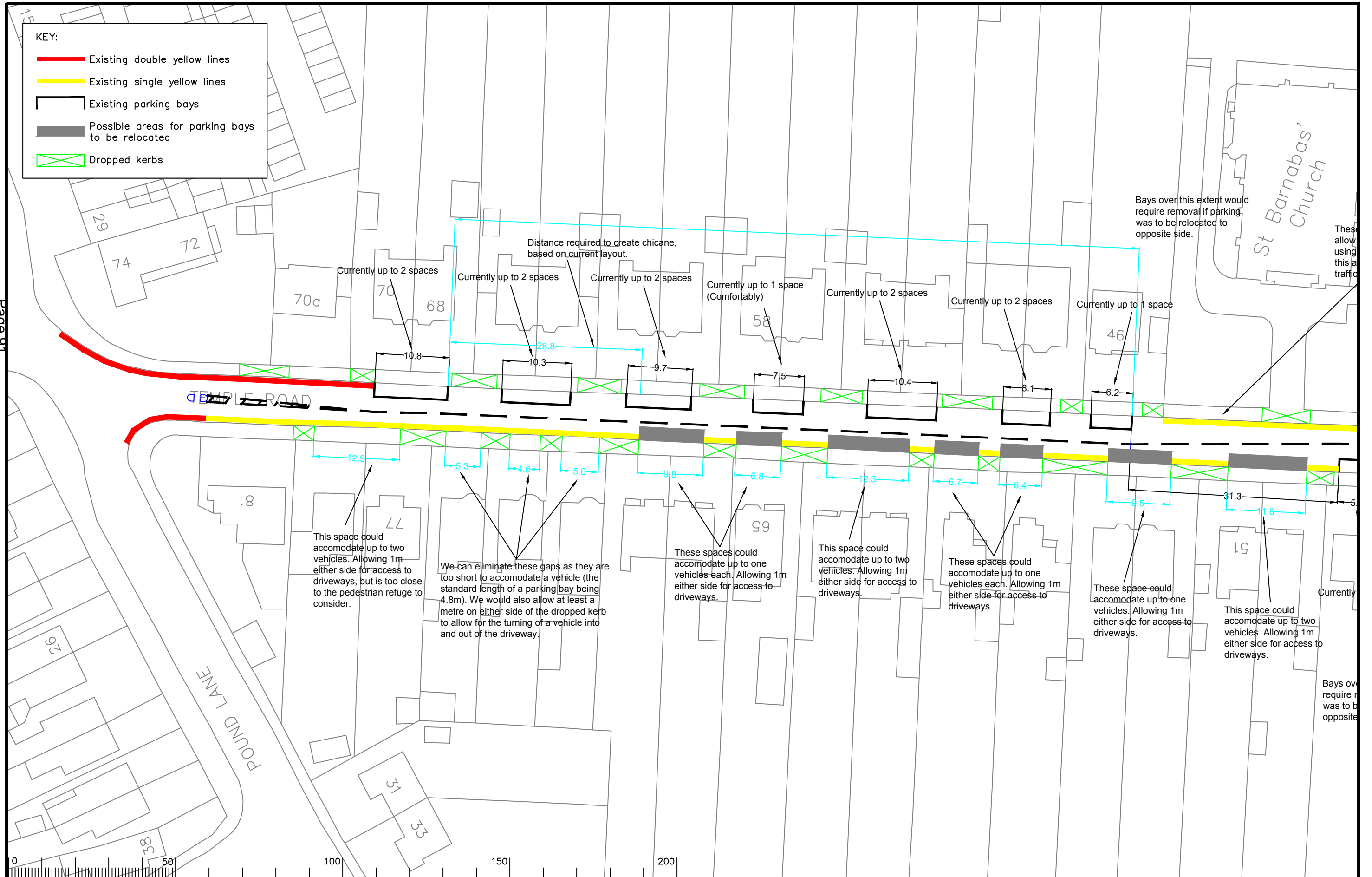


**KEY:**

- Existing double yellow lines
- Existing single yellow lines
- Existing parking bays
- Possible areas for parking bays to be relocated
- Dropped kerbs



Bays over this extent would require removal if parking was to be relocated to opposite side.

These allow using this a traffic

This space could accommodate up to two vehicles. Allowing 1m either side for access to driveways, but is too close to the pedestrian refuge to consider.

We can eliminate these gaps as they are too short to accommodate a vehicle (the standard length of a parking bay being 4.8m). We would also allow at least a metre on either side of the dropped kerb to allow for the turning of a vehicle into and out of the driveway.

These spaces could accommodate up to one vehicle each. Allowing 1m either side for access to driveways.

This space could accommodate up to two vehicles. Allowing 1m either side for access to driveways.

These spaces could accommodate up to one vehicle each. Allowing 1m either side for access to driveways.

These space could accommodate up to one vehicles. Allowing 1m either side for access to driveways.

This space could accommodate up to two vehicles. Allowing 1m either side for access to driveways.

Bays over require n was to b opposite

Notes

Rev.	Description	Drwn	Sig.	Date	Chkd	Sig.	Date	Appr	Sig.	Date

Rev.	Description	Drwn	Sig.	Date	Chkd	Sig.	Date	Appr	Sig.	Date

North Point

Based upon the Ordnance Survey mapping with the permission of the Controller of Her Majesty's Stationery Office. © Crown copyright. Unauthorised reproduction infringes Crown copyright and may lead to prosecution or civil proceedings. Surrey County Council, LA 076272, 1996.

Drawn by	SDC	Sig.	SDC	Date	02.17
Checked by	RH	Sig.	RH	Date	02.17
Approved by	DC	Sig.	DC	Date	02.17

Project

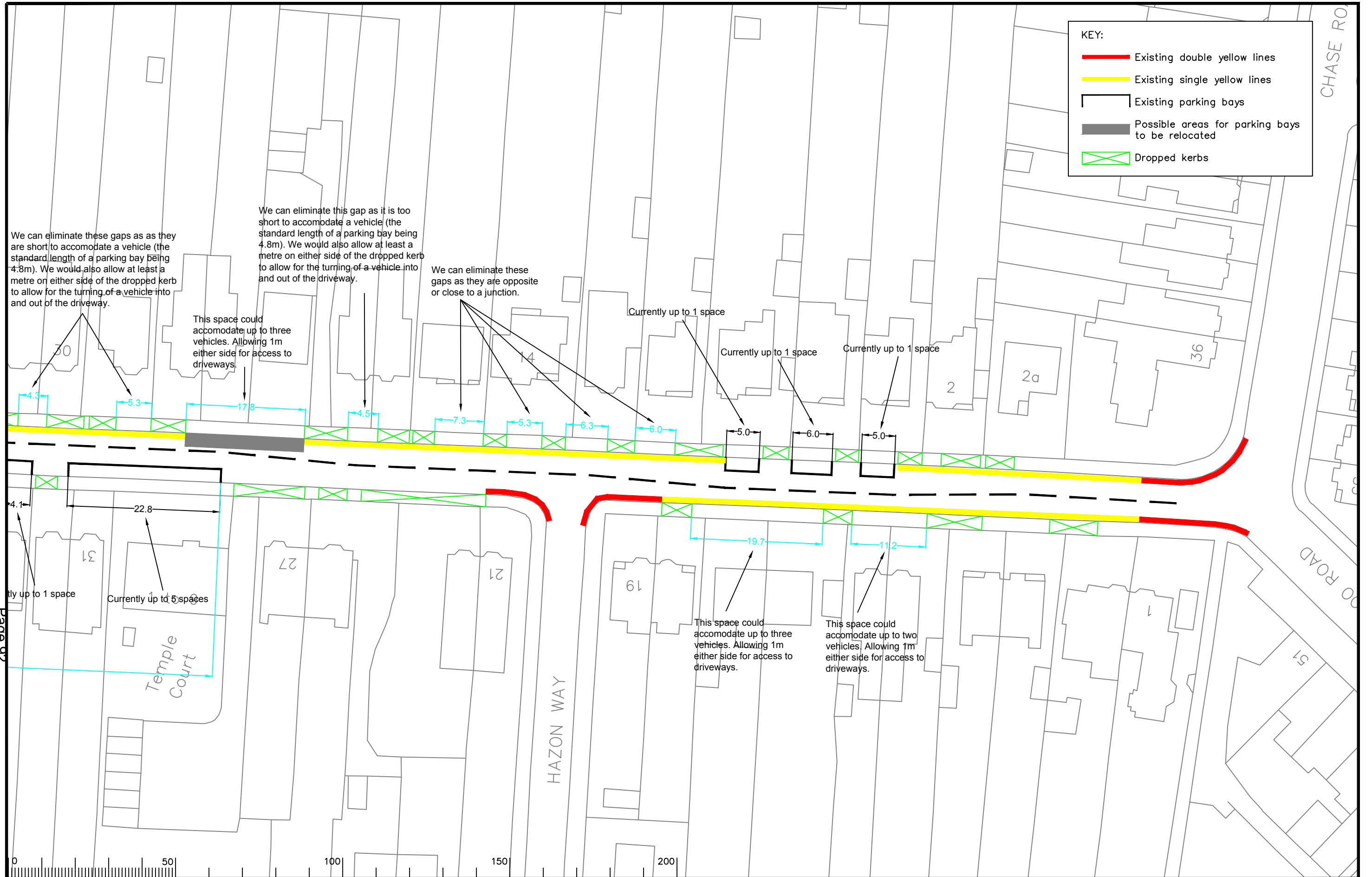
EPSOM AND EWELL  
PHASE 10 PARKING REVIEW

Temple Road

SHEET OF

**SURREY COUNTY COUNCIL**  
Sustainable Development  
Head of Transportation  
Roads and City of Guilds

Project No. 3282  
Contract Sheet No. 60  
Drawing No. 60  
Rev. -  
Classification COMM



Page 92

Notes

Rev.	Description	Drwn	Sig.	Date	Chkd	Sig.	Date	Appr	Sig.	Date

North Point

Based upon the Ordnance Survey mapping with the permission of the Controller of Her Majesty's Stationery Office. © Crown copyright. Unauthorised reproduction infringes Crown copyright and may lead to prosecution or civil proceedings. Surrey County Council, LA 076872, 1996.

Drawn by SDC Sig. SDC Date 02.17

Checked by originator RH Sig. RH Date 02.17

Approved by DC Sig. DC Date 02.17

Project

EPSOM AND EWELL  
PHASE 10 PARKING REVIEW

Drawing

TEMPLE ROAD

Project No. 3282

Contract Sheet No.

Drawing No. 62

Rev. -

Classification COMM

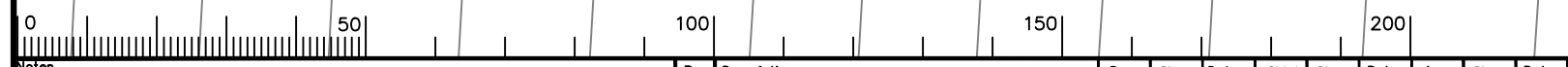
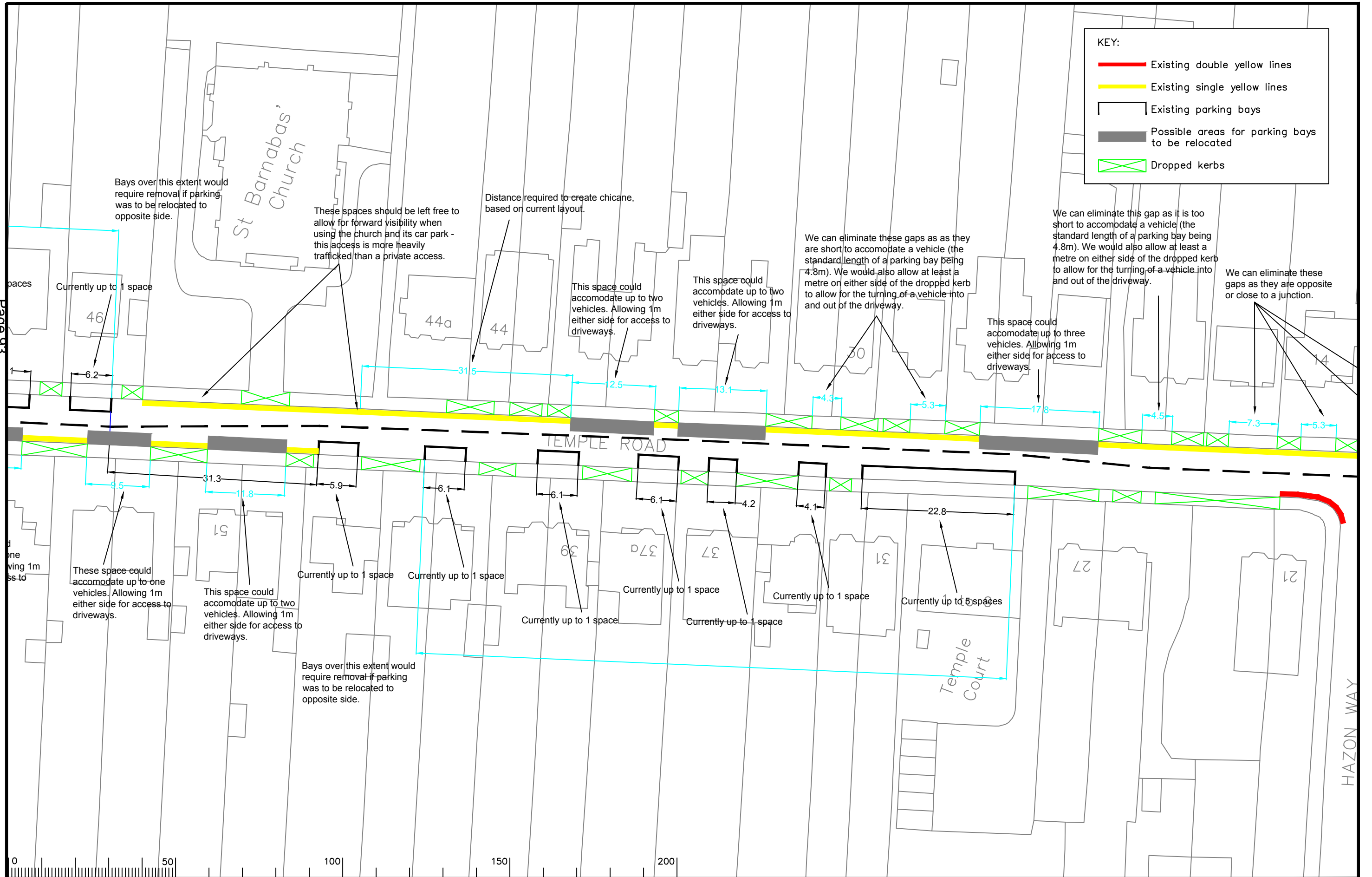
SHEET OF

**SURREY COUNTY COUNCIL**  
Sustainable Development  
Head of Transportation  
14, Lion Works  
1000000 City of Guilds Way

\\pri-oes-13\VL4\MLAB3\ecod\CORE\Traffic and Legal\Parking Team\EPSON & EWELL\Phase 10\Drawings\Comm\Blaire\Phase 10\_62.dwg

**KEY:**

- Existing double yellow lines
- Existing single yellow lines
- Existing parking bays
- Possible areas for parking bays to be relocated
- Dropped kerbs



Notes

Rev.	Description	Drwn	Sig.	Date	Chkd	Sig.	Date	Appr	Sig.	Date

Drwn	Sig.	Date	Chkd	Sig.	Date	Appr	Sig.	Date

Based upon the Ordnance Survey mapping with the permission of the Controller of Her Majesty's Stationery Office. © Crown copyright. Unauthorised reproduction infringes Crown copyright and may lead to prosecution or civil proceedings. Surrey County Council, LA 076872, 1996.

Drawn by: SDC, Date: 02.17  
 Checked by: RH, Date: 02.17  
 Approved by: DC, Date: 02.17

Project: EPSOM AND EWELL  
 PHASE 10 PARKING REVIEW  
 Temple Road

**SURREY COUNTY COUNCIL**  
 Sustainable Development  
 Head of Transportation  
 8.4.10  
 (01430) 0247 City Hall, PO1 1PT

Project No. 3282  
 Contract Sheet No. 61  
 Drawing No. -  
 Classification: COMM

This page is intentionally left blank