



Orbis Finance update

Orbis Joint Committee
16 October 2017

Vision for the service



Orbis Finance integration strategy 2016-19



Page 52

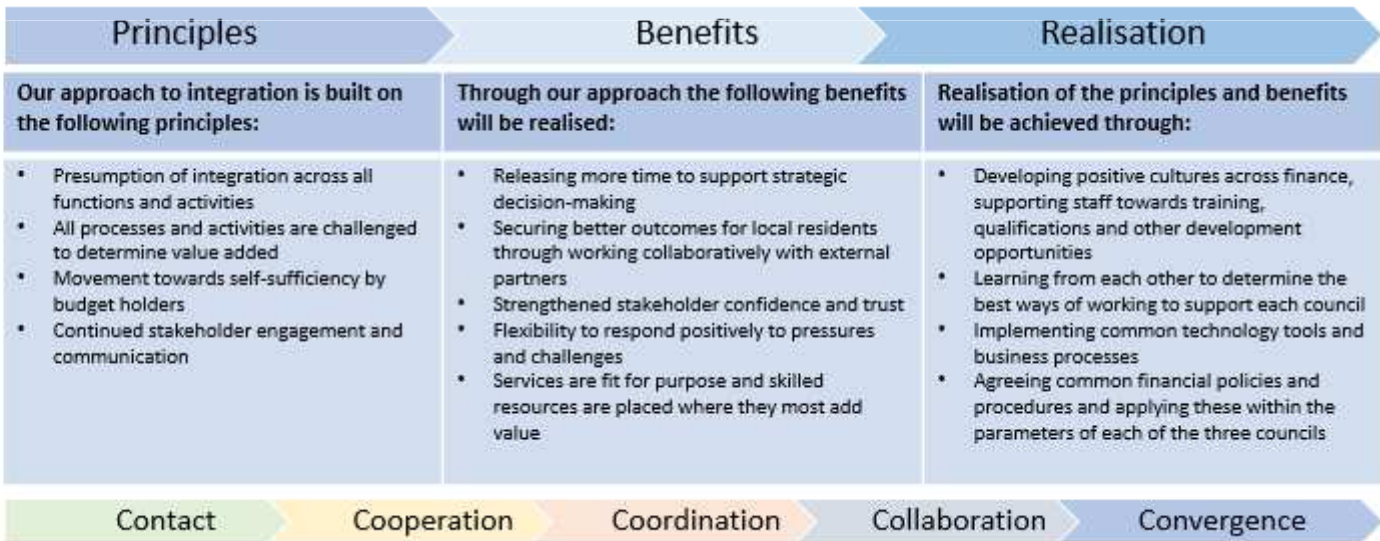
Vision
To enable and empower our partners to optimise their financial resources for the benefit of residents

Providing stewardship
 Ensuring responsible, accountable and transparent decision making

Ensuring sustainability
 Enabling future needs and outcomes to be met

Future focussed
 Proactive, outcome focussed and resilient

Values
Role model our public service values
Place the customer at the heart of everything we do
 Be EPIC



Integration so far

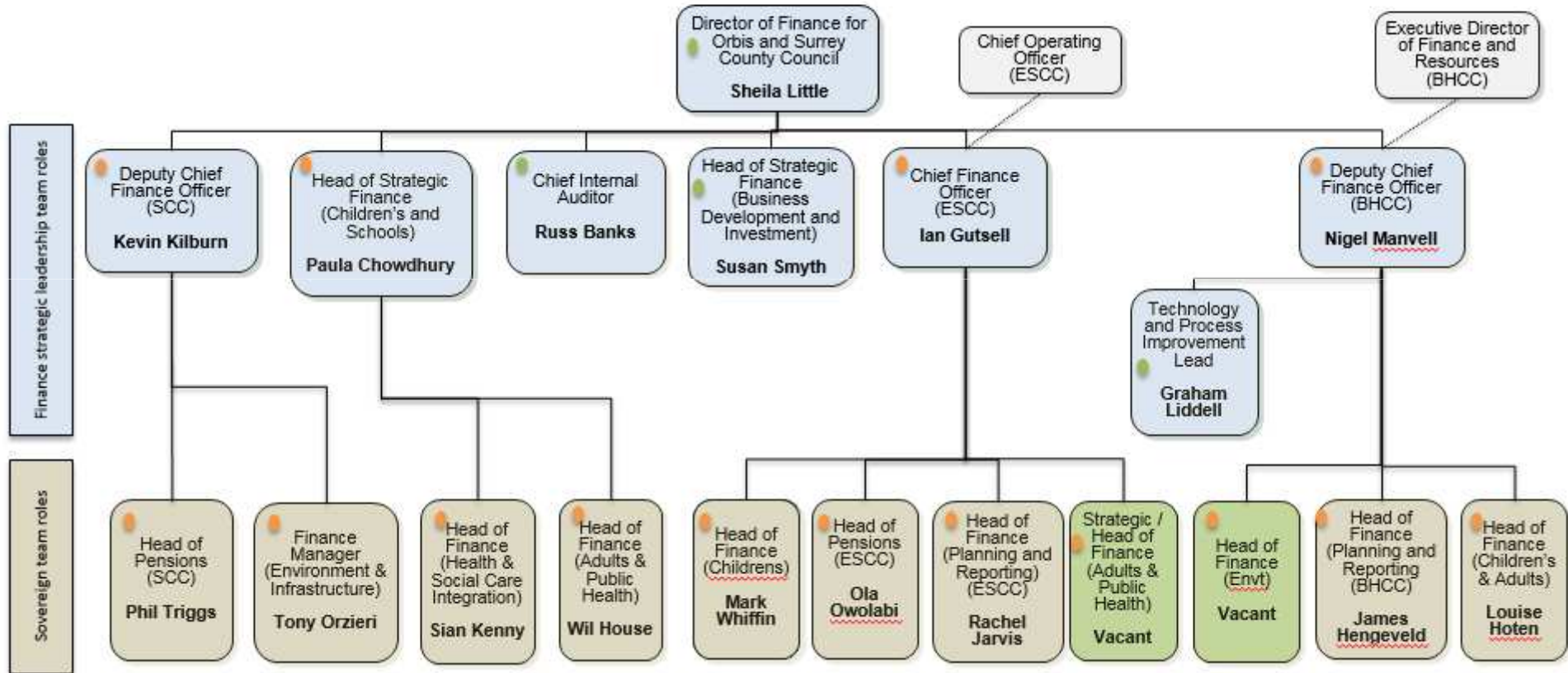


- Director of Finance for Orbis appointed in September 2016
- Orbis Internal Audit (BHCC, ESCC and SCC) have been working jointly and aligning working practices since October 2015
- Integrated Finance Leadership team appointed in May 2017
- Review of Centres of Expertise underway
- Service Finance integration project underway

Orbis Finance leadership



Key:
 Sovereign role ●
 Blended role ●



Centres of Expertise



- Insurance
- Financial Planning
- Treasury Management
- Taxation
- Financial Systems
- Financial Accounting
- Risk Management

Covers about 20% of the service

Currently reviewing options for integration

Service Finance integration



- Accountancy
- Forecasting
- Business planning and strategic advice
- Financial and performance data
- Budget setting

Covers about 60% of the service

Scoping and discovery phase

A number of work streams in place

Timeline



By April 2018:

- Integrated Internal Audit team
- Integration and collaboration across Centres of Expertise
- Service Finance opportunities identified

By April 2019:

- Integration and collaboration across service finance

Staff engagement and comms



- Orbis Finance weekly newsletter – ‘Finance Matters’
- Director of Finance ‘meet and greet’
- Orbis Finance away day
- Staff engagement driven by staff directly

Savings targets



2017/18 £0.6m

2018/19 £1.1m

2019/20 £0.1m

This page is intentionally left blank