



# **SCHOOLS ALLIANCE FOR EXCELLENCE UPDATE**

---

SELECT COMMITTEE 28<sup>TH</sup> JULY 2020

MARIA DAWES - CEO

# OUR MISSION

To create an inclusive partnership where all children and young people have the opportunities to flourish, enjoy learning and achieve the best possible outcomes through excellent education.



*We are the glue that connects the system*

# OUR OBJECTIVES

## Engagement and Partnership

- *strong partnership working across and between schools and stakeholders (including Surrey CC) impacts positively on outcomes for children and schools*

## Professional Learning

- *to provide the very best support and professional development delivered by system practitioners with expertise and track record*

## Vulnerable Groups

- *to improve outcomes and progress for identified vulnerable groups including disadvantaged and pupils with special educational needs and disabilities*

## School Improvement

- *to maintain Surrey pupils' top-quartile performance at the Early Years' Foundation Stage (EYFS), key stage one, two and four*
- *to increase the proportion of schools judged as good or outstanding, with the aspiration that no school will be placed in an Ofsted 'inadequate' category within the next 18 months*

# ENGAGEMENT AND PARTNERSHIP

- Every Surrey school and academy is eligible to become a Member of Schools Alliance for Excellence for no cost.
- Two third of schools have paid an initial subscription fee.
- Strategic partnerships with all the Dioceses working in Surrey, Surrey CC, Surrey Teaching Schools Network, The Surrey Plus Maths Hub, The White Knights English Hub, The Science Learning Partnership, Surrey Arts, The Chartered College of Teaching, The Education Policy Institute and the Education Endowment Foundation.



# SCHOOL IMPROVEMENT

**Light Touch:** Good and outstanding schools with no known concerns

**Light Touch +:** Schools judged as good or outstanding but recognized that capacity to provide external support may be limited, perhaps due to a new Headteacher or temporary staffing issues, or specific targeted support is needed

**Support and Challenge:** Schools judged by Ofsted to require improvement (RI); schools judged as good or outstanding identified as vulnerable to a decline in Ofsted grading; schools where analysis of performance data places them at serious risk of decline

**Support and Challenge +:** Schools judged by Ofsted to be inadequate or likely to be judged by Ofsted as inadequate at the next inspection or where there are serious and significant other concerns.

	Number of Support and Challenge (inc +) Schools	Total Number of Maintained schools
Primary	26 (14%)	183
Secondary	2 (17%)	12
Special and PRU	2 (9%)	22

# COVID-19 - Working in close partnership with the Directorate of Education, Life-long Learning and Culture and Phase Councils to provide a co-ordinated education response for Surrey



HOME COVID-19 SUPPORT ABOUT SCHOOL IMPROVEMENT STRATEGY NEWS & RESEARCH CONTACT

## HOME LEARNING INFORMATION FOR SCHOOLS

### Adjusting to new approaches for teaching and learning in Surrey schools

SAFE recognise and applaud the excellent job that Surrey Schools have done in responding to the Covid-19 crisis. Creating the infrastructure and resources for students across Surrey to continue their studies remotely has happened at high speed and quality. Thank you to all of you to all you have done and continue to do for our children and young people.

This 'home learning' section of the SAFE website aims to support teachers and leaders as they move to phase 3 of the Covid-19 response. This phase will cover the summer term. The home learning section is phase specific with bespoke areas for **Special Primary** and **Secondary** schools. We hope that what you find here is useful and invite you to visit our website regularly as we intend to develop and refine our work next term. A key priority is that we work collaboratively to avoid duplication and repetition.

Under each phase, you will be able to navigate to the 'approaches' tab. This focuses on **how** we approach the challenge of supporting children to learn at home. You will also find the 'Curriculum Resources' tab. This is where you will find lesson content information or **what** to teach.

[CLICK HERE TO BOOK PLACES ON THE SECONDARY SUBJECT SPECIALIST SESSIONS](#)

In the last few weeks in response to the Coronavirus crisis and the requirement for home schooling, there has been a plethora of websites, links and advice made available to schools. This could feel overwhelming for Head Teachers and staff in devising an appropriate home learning offer for children and young people, particularly in responding to parents' expectations and differences in circumstances.

In response to this SAFE is attempting to highlight some of the most useful sites for schools and to organise these in an accessible way in one place. In addition to the SAFE website, schools can contact us for help in designing a curriculum offer if this would be helpful.

There is a great deal of information which is being directed at parents. We feel it is particularly important that schools act as the conduit for their pupils' education and retain the responsibility and overview during this period.

It is also crucial that any home learning offer reflects the needs of disadvantaged pupils. With this in mind, we have provided suggestions for both on-line and off-line learning opportunities. It may be unavoidable that hard copy learning packs are created by schools for use for those pupils with limited or no access to technology.

Please use the graphic links below to jump to your specific area of interest. We have collated resources under specific subject areas.



On line resources

HOME COVID-19 SUPPORT ABOUT SCHOOL IMPROVEMENT STRATEGY NEWS & RESEARCH CONTACT



### General Resources and Support

#### Explaining Coronavirus to children

Released this week (Monday April 6) - a free information book explaining the coronavirus to children, illustrated by Gruffalo illustrator Axel Scheffler

<https://nosyrow.com/blog/released-today-free-information-book-explaining-coronavirus-children-illustrated-gruffalo-illustrator-axel-scheffler/>

#### Autism Outreach

Freemantles has produced 'A guide for supporting children with ASD at home.'

In addition they have a webpage set up to collate and share resources. <https://www.freeoutreach.org.uk/Resources-for-working-from-home/>

#### Resources for Online Safety

Keeping children safe online is a key challenge as we adapt to home learning. There are a number of organisations that have compiled resources and guidance to help support safeguarding and safe remote learning which we have compiled below.

LGfL - guidance and tools to support safeguarding and online safety.

National Online Safety - basic membership to this service is free.

UK Safer Internet Centre - guidance on safe remote learning.

London Grid for Learning - guidance on the use of videos and livestreaming.

Internet matters - for support for parents and carers to keep their children safe online.

London Grid for Learning - for support for parents and carers to keep their children safe online.

**Supporting pupils bereaved by COVID**  
from Schools Alliance for Excellence

Supporting pupils bereaved by COVID-19

- This Webinar aims to offer support to schools or settings and parents and carers on how best to support children and young people who have experienced loss at this uncertain time

Logos: SURREY COUNTY COUNCIL, jigsaw

Vimeo player controls: 1:00:39

JOIN OUR SUBJECT NETWORK MEETINGS

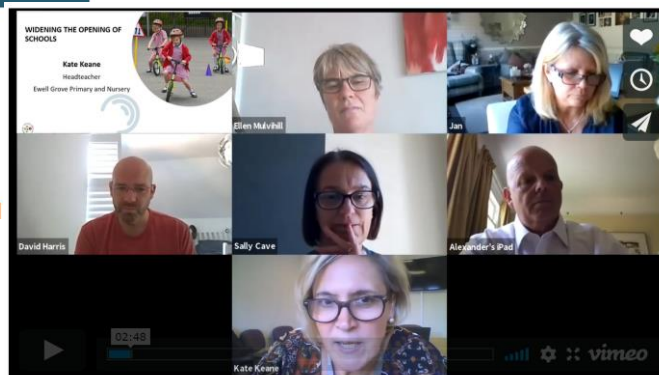
## Working with you as you prepare for phased reopening

[Joint Letter from SCC, SaFE and Phase Council Chairs 22.05.20](#)

Dear Colleagues

As we come to the end of this half-term we have been reflecting that the last few weeks have certainly been one of, if not the most, intense and challenging periods in our careers. We are all in discovery mode, having never done anything like this before and the decisions required in opening schools and settings for more children and young people, will impact on a large number of people. We are all dealing with this at pace, with a great deal of passion.

On behalf of all members of the education partnership, we are overwhelmed by the outstanding leadership you have shown during this period.



# SURREY SCHOOLS AND SETTINGS COVID-19 RECOVERY PLAN

A joint response across the education partnership to support early years setting, schools, colleges and alternative providers to deliver their statutory duties in line with the Government guidance relating to COVID-19.



This page is intentionally left blank