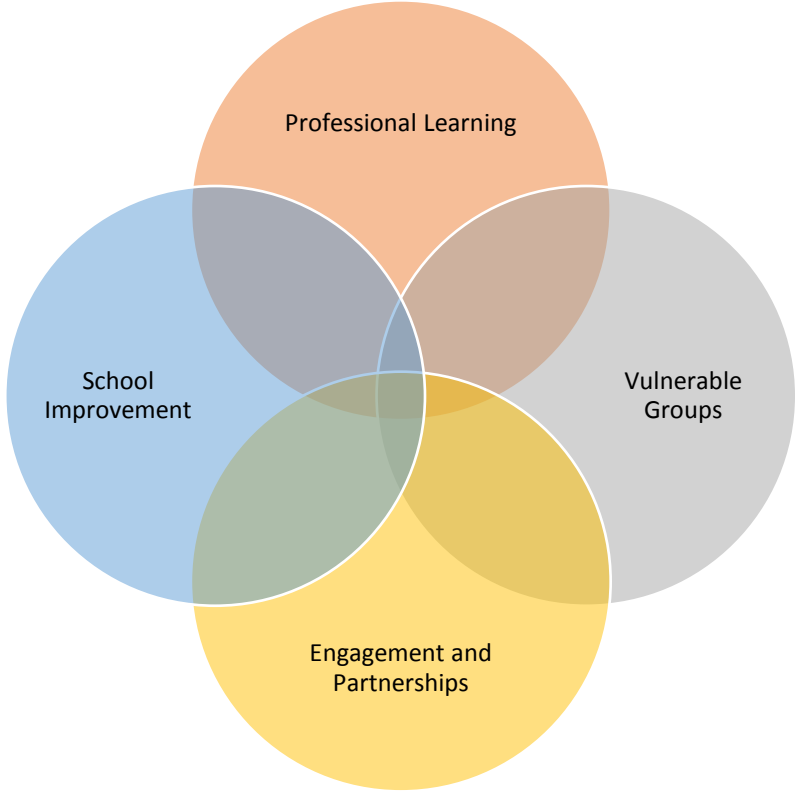


Annex 1

SAfE's Strategic Plan

Our Strategy is based on four inter-linking aspects to enable us to meet our aspirations:



For 2020/21 in light of the COVID pandemic our priorities can be described as below:

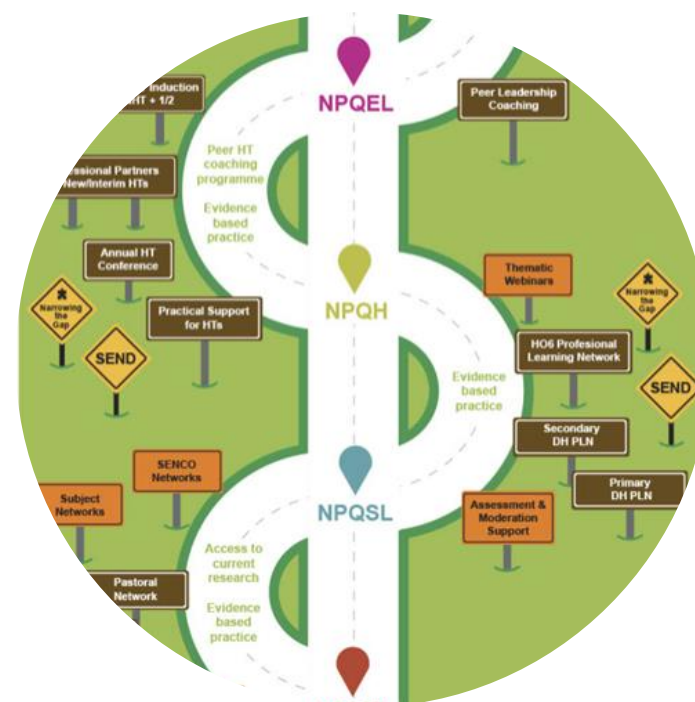
Strategic Priority	Broad Description
Engagement and Partnership	<ul style="list-style-type: none"> • We will support the building of a mature school-led system where schools/settings and partners have a shared commitment to improvement and excellent outcomes for all children and a collective refusal to accept under-performance • Surrey is outward looking and influences policy-making at every level of the education system seeking sharing innovative solutions to problems and change. • We will work in partnership with Surrey CC/Health/3rd sector on supporting pupils mental health and well-being particularly in the light of COVID.
Professional Learning	<ul style="list-style-type: none"> • We will provide a road map of high-quality leadership, teaching and learning and governance professional learning programmes supporting career development and progression delivered by system practitioners with expertise and track record. • We will work with schools to support teaching and whole-school strategies in light of COVID particularly around: <ul style="list-style-type: none"> • Supporting great teaching – including a blended approach • Assessment and feedback • Transition support • We will develop governance support to guide them through their role considering ongoing COVID implications.
Vulnerable Groups	<ul style="list-style-type: none"> • We will work with partners to ensure that all children and young people receive an inclusive education and a support offer that matches their needs. • We will work with schools and partners to improve outcomes and progress for identified vulnerable groups including disadvantaged and pupils with special educational needs and disabilities. • We will support schools to ameliorate the COVID gap ensuring that approaches align with Pupil Premium strategies and wide school improvement priorities
School Improvement	<ul style="list-style-type: none"> • We will support all schools to take responsibility for their own improvement including the ability to accurately self-evaluate using robust external challenge

	<ul style="list-style-type: none"> • We will support and challenge all schools to improve, regardless of their starting point. We will aim to support schools before they get into difficulty providing more intensive support as required and ensure that all schools can access the support they need.
--	---

SAfE's Professional learning Offer

- SAfE's learning pathway provides a routemap, to help schools navigate the opportunities we have on offer to support their staff's professional learning. We have run a comprehensive programme of professional learning opportunities since September focused on six key areas:

- Covid-19/Contingency Planning
- Raising outcomes for disadvantaged learners
- SEND/Inclusion
- Networks/Leadership development
- Statutory Assessment & Moderation
- Governance

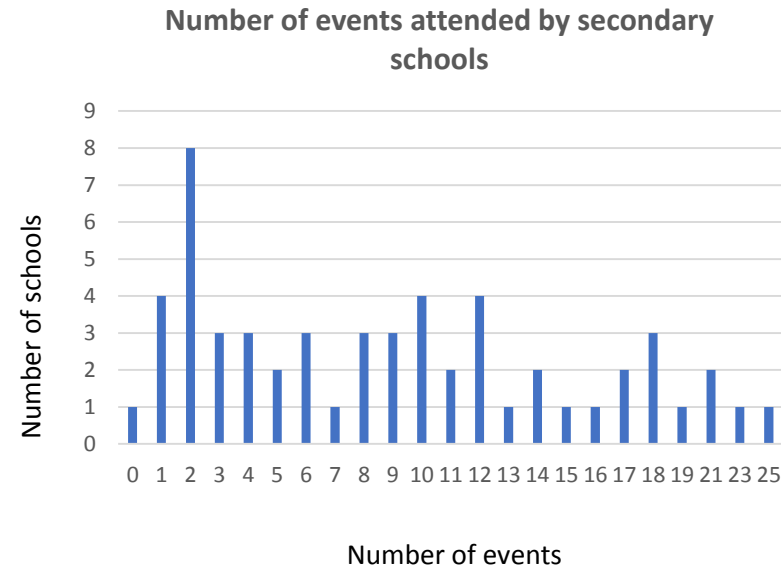
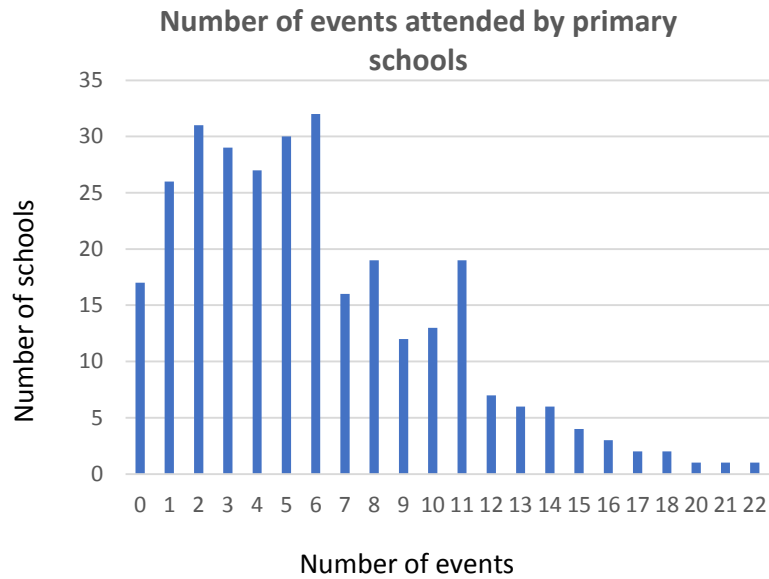


- We published two updates of our professional learning brochure and have an updated events area on our website. In total in the Autumn term we have run 60 different training webinars, programmes and network events. This year due to the

challenges that COVID have faced we have run many of our events free for schools with recordings available in the media library on our website.

- Overall attendance at events has been very strong. In the Autumn term:
 - Over 50% of primary schools attended 5 or more events with over 20% attending 10 or more events.
 - Only 17 primary schools did not attend any event.
 - 50% of secondary schools attended 8 or more events with over 20% attending 16 or more events.
 - Only 1 secondary school did not attend any events.

- Our best attended webinars include
 - COVID-19 contingency planning
 - Governor webinars
 - Supporting children to re-engage with school
 - Evidence-based literacy and language strategy for disadvantaged pupils
 - Google Classrooms for Beginners



- Feedback across all programmes is very strong and being used to inform future programmes. The team are working towards quality assuring all programmes against criteria being developed by the Chartered College of Teaching.
- We are aware that we are currently not providing specific professional learning for Special Schools – we are working with the Special School Phase Council to address this.
- We invite all schools to subscribe an amount equivalent to 89p per pupil, for 2020/2021. Subscribers to SAfE are eligible for:
 - free attendance at all subject networks and pastoral networks
 - free attendance at COVID-19 events
 - receive 20% cost discount against all other (non-statutory) listed events.
- As of 30 November 2020, 76% of all schools have opted into subscription

