

SURREY COUNTY COUNCIL

MR MARK NUTI, CABINET MEMBER FOR COMMUNITIES

DATE: 16 MARCH 2022



LEAD OFFICER: MARIE SNELLING EXECUTIVE DIRECTOR OF CUSTOMER AND COMMUNITIES

SUBJECT: YOUR FUND SURREY APPLICATION – SOUTH PARK SPORTS ASSOCIATION

PROJECT NAME: SOUTH PARK COMMUNITY 3G PITCH

CF REFERENCE: CF251

ORGANISATION Growing A Sustainable Economy So Everyone Can Benefit/ Tackling
STRATEGY PRIORITY Health Inequality/Enabling A Greener Future/Empowering
AREA: Communities

SUMMARY OF ISSUE:

This report sets out the key information on the **South Park Sports Association - Community 3G Pitch** Your Fund Surrey (YFS) Application for the consideration of the Cabinet Member for Communities with recommendations for funding approval.

The vision of YFS is to bring community-led and place-making projects to life, with a focus on wider community benefit that leaves a real legacy.

RECOMMENDATIONS:

It is recommended that the Cabinet Member:

1. Approve funding from Your Fund Surrey for project CF251 South Park Community 3G Pitch for the full amount requested of £150,000 with no contingency due to the fixed price contract.
2. To approve the inclusion of the following conditions in the funding agreement as a requirement of this funding:
 - For the applicant to develop a usage policy to be adopted by the Steering Committee and South Park Sports Association for the life of the facility which ensures the widest access to the community, to include a booking policy and schedule of fees maintaining affordable rates;
 - completion of all planning conditions prior to release of YFS funding;
 - final evidence of all funding to bring the project to a successful conclusion is secured;
 - the applicant uses all possible measures identified to increase sustainability and reduce environmental impact during construction and operation of the facility;
 - the applicant having all relevant insurances and safeguarding policies in place.

3. Agree that the applicant be required to consider all viable options to extend the reach of and use of the new facility to all groups within the local community as part of the development plan, noting the offer for women & girls and people living with disabilities. To request that monitoring of the development plan is shared with YFS Team Officers as part of the YFS monitoring of the project.
4. Agree that the applicant be required to work with partners to identify and promote measures to tackle health inequalities through the use of the new facility via the development of a usage policy, including consideration being given to social prescribing and provision of relevant sessions, or trial events
5. Agree that the applicant be required to consider all reasonable measures which could be undertaken to extend the reach of and use of the facility to harder to reach groups within the local community.
6. To agree that the YFS funding (£150,000) will specifically contribute toward item of expenditure for the pitch base and foundations (210,574), which equates to 71% of this item.
7. To agree to require the applicant that if the project costs for the item being funded by YFS come in under budget, then the relevant proportion (71%) of those savings are to be returned to YFS under the Guaranteed Maximum Price contract

Reason for Recommendations

This application has been the subject of a rigorous assessment process by officers, as set out in the body of this report. Officers consider the project to meet the aims and published criteria of the fund and to satisfy the requirements to award funding.

Executive Summary

1. This Project comprises the design, manufacture and installation of a 106m x 70m floodlit Stadia / Community 3G Artificial Grass Pitch (AGP) within an existing stadium (virgin greenfield site) including new perimeter 4.5m high fencing and 1.2m high spectator fencing, light-emitting diode (LED) floodlights, goal storage, new spectator area, sports and maintenance equipment, infill retention mitigation. 3G stands for a Third-Generation synthetic surface which consists of three elements; synthetic turf, sand infill and rubber infill. The aim from the South Park Sports Association is to have a facility that benefits the whole community and is inclusive for all.
2. A Local Football Facility Plan (LFFP) has been conducted by the Football Foundation (FF) in collaboration with the Football Association (FA), Surrey FA, Reigate Borough Council and Active Surrey. The purpose of the LFFP is to identify priority projects that can deliver better facilities for grassroots football. The Reigate and Banstead LFFP has identified the need for seven new 3G pitches in the borough to meet demand and the South Park Sports Association project is included as a priority.
3. The 3G pitch will provide an opportunity for existing, former and new teams to play given that many teams have found it difficult to find pitch availability in the area and pitches have been in decline for many years. For example, the local Redhill and District Football League has seen a 70% reduction in participating teams in recent years. The 3G pitch will also enable games and events to be organised by local clubs, residents, and

members, as well as enable South Park Sports Association to build their provision for women, girls and people living with disabilities.

4. South Park Sports Association have devised a usage plan that commits to a wide variety of regular community use for the pitch in addition to local grassroots football clubs, such as Reigate Priory FC, Reigate Football Club and Reigate Women's Football Club. In addition, the usage plan includes regular participation by YMCA East Surrey, Man vs Fat, Reigate Refugee Programme, East Surrey Hawks (An inclusive football club for children with disabilities, health conditions and complex needs), Crawley Town FC Foundation, Just Play (in conjunction with Reigate and Banstead Borough Council), English Deaf League, Wildcats (a specific FA programme for non-competitive girls' football) and South Park Walking Football. South Park Sports Association are also committed to starting a senior women's team by the 2022/23 season. As part of their partnership with local football clubs and the organisations listed, South Park Sports Association will be offering reduced hiring fees to all community organisations.
5. The range of organisations scheduled to use the new facility supports the Council's approach to equality, diversity and inclusion. The facility is also located in Woodhatch, an area of greater challenge, therefore the project supports the Council's no one left behind agenda.
6. The applicant has secured a substantial amount of funding for this project and their submission to YFS is the last piece needed to mobilise the project. If successful they will be in a position to begin work imminently.

Details

Description of project benefits

7. The project responds to the demonstrated community need in the Reigate and Banstead LFFP, for improved playing facilities for grassroots football in the area.
8. The project aims to increase the variety of football opportunities that are on offer for residents. Particularly the offer for women & girls and people living with disabilities will increase due to the inclusion of the Wildcats and YMCA East Surrey as regular users.
9. Officers consider the project contributes towards the following areas of the SCC priorities 2021-2026:

Growing a sustainable economy so everyone can benefit

- Grounds team to receive Level 2 qualification in Maintenance of Artificial Surfaces.
- All coaches to be supported in achieving at least a Level 1 in football coaching.
- Plans to include a corporate 5-a-side league for local business to enhance their cohesion and productivity.
- A local contractor has been selected for the works.
- Signed up to the FA Pitch Improvement Programme to improve grass pitches including a range of measures to help develop the skills and knowledge of the volunteers and groundsmen including seminars and workshops.

Tackling health inequality

- Through the diverse usage plan all age groups, genders and disabilities will be supported to be active in an environment that suits their needs to improve mental and physical health.

Enabling a greener future

- A lack of suitable facilities in the area means longer car journeys, this facility would reduce the need for travel by residents.
- Reduced water usage of between 1.8million to 3.7million litres each year for full sized adult pitch.
- SPSA have signed up to the FF Pitch Maintenance Fund. And will report on improvements twice yearly through the Pitch Power App.
- Floodlights are proposed to be energy efficient LEDs

Empowering communities

- Increase in usage creates opportunities for community volunteers.
- Increase in socialisation and community spirit.

Project Timeframes

10. The key project delivery dates are approximately 3 months, comprising of:

12 weeks for build of facility

- Pitch installation
- Erecting perimeter fence and floodlights
- Preparation of surrounding land to ensure the facility is accessible

1 week for handover from contractor to South Park Sports Association.

11. The FF grant must be utilised in this financial year and hence the project will commence as soon as a funding decision is confirmed from YFS in March 2022. Otherwise, FF funding will be withdrawn and South Park Sports Association would have to re-apply to FF.

Management of the project

12. South Park Sports Association is a not-for-profit organisation run by a management committee elected by the members. The three member clubs are South Park FC, South Park Juniors and East Surrey Hawks. The organisation has a written constitution. All sections have their own committee with representation on the association committee. A Steering Committee is being formed to oversee the day to day running and usage of the 3G pitch and report back to the South Park Sports Association management committee. The FF and Reigate & Banstead Borough Council each have a seat on the steering committee to ensure community usage is strongly represented. As part of the FFs' funding, the Steering Committee will also be accountable for a development plan which has a focus on increasing provision for women, girls and people living with disabilities.

13. The South Park Sports Association Steering Committee will oversee management of the build and will be the key contacts during the handover of the facilities from contractor to the association. During the first year, the site maintenance will be carried out by the contractor. This will then be handed over to the South Park Sports Association Steering Committee to run moving forward. The Grounds team will be undertaking the Level 2 Effective Maintenance of Artificial pitches in time for the maintenance handover.

14. A facilities team comprising of Duty Managers, Caretakers and Grounds People will be headed by a Bookings Manager. This team will have day-to-day control of the facility and will manage fair and regular use for community groups. The facilities team will report to the Steering Committee.

15. The site is vested with Fields in Trust meaning it is safeguarded for recreational use. South Park Sports Association has been running for over 100 years but if it were to fold Fields in Trust would take over the running of the site. The Football Foundation will also

have a charge on the site to safeguard their investment. Meaning the site is safeguarded for recreational use for future generations.

Project Lifespan

16. The pitch will have a minimum lifespan of 10 years. South Park Sports Association has committed to a sinking fund for maintenance, upgrades and replacement. The ongoing maintenance procedures that the facilities team will undertake has potential to extend the lifespan well beyond 10 years.
17. The benefits of 3G pitches include that they are free draining and hence permit play all year round. Depending on intensity of usage they yield 90 million hours of play over eight to ten years. The lifespans of those with floodlights tend to be shorter. They are environmentally friendly by reducing significant watering costs and require no pesticide or fertiliser use. The playing surface is scattered with a layer of sand and rubber crumb, which is usually made from old tyres and recycled rubber material. They reduce the risk of player injuries and are low maintenance. However, the ability to recycle artificial turf at the end of its life and the costs of recycling compared to landfill are still being developed.

Financial and Value for Money Implications

18. YFS funding is requested for construction of the foundation and base of the 3G AGP. The project also includes perimeter 4.5m high fencing and 1.2m high spectator fencing, LED floodlights, goal storage, new spectator area, sports and maintenance equipment, infill retention mitigation.
19. The project costs are based on independently sourced quotations from 6 contractors. The tender process was run through FF. The selected contractor is Support in Sport (SIS). The contractor will be awarded on a Guaranteed Maximum Price contract.
20. The project has applied for £150,000 which equates to 19% of the overall project costs. The remaining monies needed for the project have been raised from various sources (see Table 1).
21. Table 1. Financial Summary details the £632,648 of other funding which has been secured against the total project cost of £782,648.
22. Table 2. Project Cost Breakdown and Grant Utilisation, itemises the allocation of YFS grant against specific works.

Table 1. Financial summary

Amount applied for:	£150,000
Total project cost:	£782,648
Percentage of cost against total:	19%
Have other funding sources been secured?	Yes
Other funding:	£632,648
Is there a commercial element to the project?	Yes
Amount suggested for funding:	£150,000

Table 2. Project Cost breakdown and Grant Utilisation:

Activity	Total Cost (excluding VAT)	YFS Contribution
Site preliminaries – below ground	£15,800	£0
Site clearance, excavation, groundworks	£36,588	£0
Drainage Works	£14,443	£0
Pitch Foundations and Base	£210,574	£150,000

Floodlighting (below ground)	£7,364	£0
Infill Retention Mitigation	£16,157	£0
Contractors other items	£7,500	£0
Site preliminaries – above ground	£24,170	£0
Artificial Grass Surface	£142,505	£0
Perimeter Fencing	£87,941	£0
Sports Equipment and Site Furniture	£32,723	£0
Floodlighting	£47,475	£0
Reinstatement	£2,050	£0
Maintenance equipment	£21,900	£0
Groundworks	£36,588	£0
Contingency	£10,000	£0
Design fees	£15,000	£0
Overheads	£13,342	£0
Extra costs for delays	£37,978	£0
Planning costs	£15,000	£0
Grant applications and project management	£5,000*	£0
Other Costs	£186,153	£0
Total	£782,648	£150,000

*not funded by YFS

- 23.** As with all applications, there is a risk that construction and purchase costs will increase between application and approval. The applicant has secured quotes that support their costing, and will ultimately be funded based on evidenced, actual spend, up to the amount awarded
- 24.** It is not proposed to hold any contingency sum for this project as YFS are the last funder. The majority and lead funder is the FF. All works fall under the contract which is let as a Guaranteed Maximum Price, hence the risk sits with the Contractor under their agreement with the FF. All invoices will go through the FF before any payment of their grant funding and they monitor the project for up to 21 years after completion.
- 25.** YFS funding (£150,000) is being requested to contribute to the item of expenditure for the pitch base and foundations (210,574), which equates to 71% of this item. If the project costs for the item being funded by YFS come in under budget, then the relevant proportion (71%) of those savings are to be returned to YFS under the Guaranteed Maximum Price contract.

Assessment of the application against the criteria for the fund:

- 26.** This application for funding has been through the due diligence and agreed governance process for the fund, which are publicly available on the County Council website.
- 27.** The application has been subject to a rigorous two step application process involving assessment and scoring by YFS Officers, with input from the Expert hub, a group of specialist Officers providing insight for the eligibility of funding. The application has been assessed and scored independently by three Officers whose scores are then moderated. A summary of the Assessment Report comments against the funds five published scoring criteria are set out in Annex 2.

Expert Hub Review

- 28.** Finance – The project passed the standard Financial assessment undertaken, demonstrating adequate quotations for the work and a positive cash flow throughout. A commercial assessment of the project is set out below.

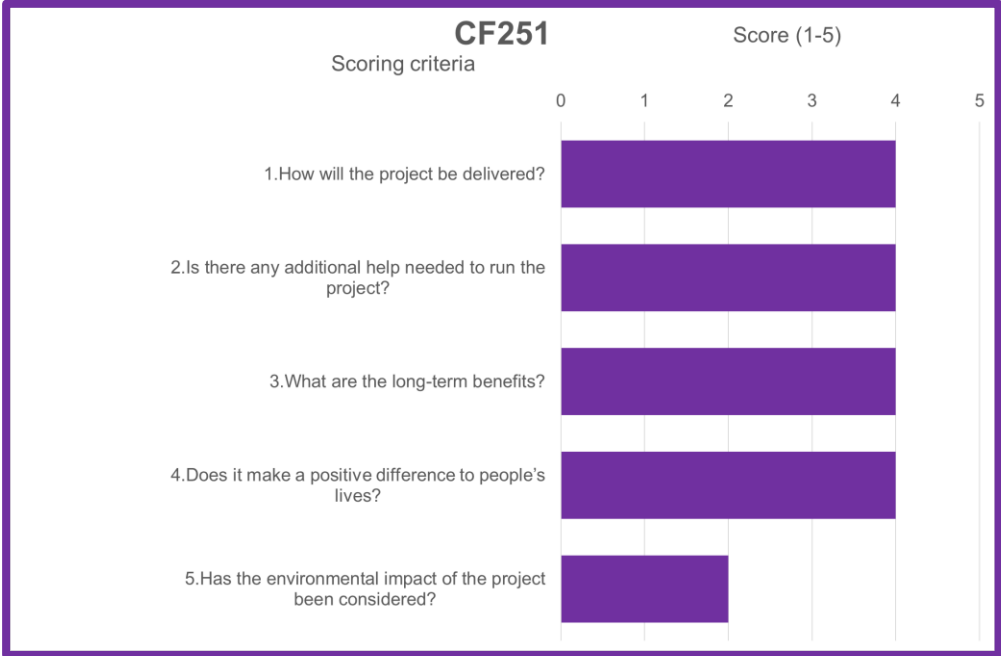
29. Commercial - The commercial viability of the applicant's submission is linked to the income generated from the usage of the pitch site. An expected timetable of usage together with pricing has been submitted by the applicant showing the forecast income expected to be generated from the winter weeks. This 30-week period makes up 96% (£68k) of the projected income and therefore is key to the financial viability of the application. The 18-week period classified as summer has further opportunities to be monetised via summer clubs and festivals, however, this income has not been forecast which provides protection to the submitted income and expenditure projections. The shortage of facilities in the area is expected to drive the anticipated usage, with the pricing aligned to other similar facilities in the surrounding areas.

30. The year-on-year income generated by the bar and kitchen is projected to be higher than the total pitch income. For Year 2 income is forecast to be £103k verses £68k, respectively. Product, delivery, and labour costs for the delivery of this income stream are in line with expectations and mean there is a relatively modest 13% margin generated. The applicant will need to manage the costs appropriately to ensure the delivery of this service does not impact the viability of the project. The forecast surplus generated from the pitch would allow for the bar and kitchen offering to operate at breakeven while ensuring the project continues to be financially viable. Therefore, this affords the applicant flex to remove the offering should it become loss making and continue without it.

Score Breakdown

31. The application scored a total of 375 out of 500 when scored by Officers broken down as follows:

Figure 1. Assessment score breakdown



Advisory Panel Comments

33. As set out in the overall governance document for YFS, the YFS Advisory Panel functions in an advisory capacity and its role is intended to assist formal decision-making processes which sit outside the Panel. The role of the YFS Advisory Panel is to review shortlisted applications following the assessment and scoring of bids by Officers, and to advise and inform the final officer recommendations to the appropriate decision-maker on the proposed funding awards to be made.

- 34.** The YFS Advisory Panel, via the Chair sought additional clarification in relation to this application to which responses were provided. These points included concerns over income and expenditure, maintenance costs and fact clarifications. The Panel further requested additional information on possible work with the SCC Natural Capital team to explore where trees could be planted to 'soft scape' the facility and if a defibrillator would be installed on site. Further detail was provided to Panel members subsequent to this session.
- 35.** The Panel were fully supportive of the project and recognised the considerable effort which had gone into the application. The panel were supportive of a recommendation to award a sum of £150,000 with the conditions to be included in the funding agreement around developing a booking and usage policy to assure affordable rates and equal access, completion of all planning conditions, confirmation of funding being in place, measures to increase environmental sustainability, maintain all relevant insurances, put in place robust safeguarding policies and that 71% of any savings on the item being funded should be returned to YFS.

Consultation

Summary of Support

- 36.** Have your say, which has had South Park Sports Association featured on the Commonplace website, received 773 comments. The overwhelming majority of respondents are in favour of the project, however there were 11 negative comments. In response to the negative comments, South Park Sports Association have provided a document to clarify the points raised which has been deemed satisfactory by officers.
- 37.** The Divisional Councillor Catherine Baart has commented as follows:
- I am absolutely in favour of sports facilities which are open to all groups and encourage exercise and participation.
- When I was approached about this application by South Park Sports Association, I supported them and also passed on to them concerns residents in New North Road had raised with me about the high metal fence to be erected just behind their gardens, and also how this would impact local people using the space which is currently open access, and light pollution.
- 38.** During planning engagement three objections were received. Two objections focused on parking issues, increased noise pollution and anti-social behaviour. The third was based on ecological objections to installing a 3G pitch. In the planning application location plan, the pitch is away from housing. Planning has been granted therefore the objections were not deemed to have any impact on grounds for planning.
- 39.** Letters of support have been received from:
- Reigate and Banstead Borough Council refugee family support team
 - YMCA East Surrey
 - English Deaf League
 - East Surrey Hawks (for special needs children)
 - Man v Fat
 - The Play Makers Academy
 - Dunnottar School
 - Surrey FA
 - Pro Soccer
 - Merstham Ladies FC

Risk Management and Implications:

40. This application for funding has been through the due diligence and agreed governance process. As part of this process the applicant has provided an overview of risks against the project. This is summarised below. Officers consider there to be adequate control measures in place.

Table 5. Summary Table of Risks and Key Mitigations

Risk description	RAG	Mitigation action/strategy
Project start date delayed	Yellow	Looking at ground shares and other facilities to hire
Confirmed users drop out	Yellow	Regular communication to be made with confirmed and unconfirmed users to update on progress and potential opening dates
Full Funding not secured	Yellow	Work with FF and Surrey FA on other funding options
Bad Weather during build	Green	Looking at ground shares and other facilities to hire
Usage Lower than Forecast	Green	Steering Committee to meet and review usage. Work closely with Reigate and Banstead and Surrey FA to identify potential new users. Advertise any open slots

41. The site is vested with Fields in Trust meaning it is safeguarded for recreational use. South Park Sports Association has been running for over 100 years but if it were to fold Fields in Trust would take over the running of the site. The FF will also have a charge on the site to safeguard their investment. Meaning the site is safeguarded for recreational use for future generations.

Section 151 Officer commentary:

42. Although significant progress has been made to improve the Council's financial position, the medium-term financial outlook beyond 2022/23 remains uncertain. With no clarity on central government funding in the medium term, our working assumption is that financial resources will continue to be constrained, as they have been for the majority of the past decade. This places an onus on the Council to continue to consider issues of financial sustainability as a priority in order to ensure stable provision of services in the medium term.

43. The long-term sustainability of the projects funded by Your Fund Surrey is a key factor in assessing their suitability. Certain projects are relatively straightforward, where ongoing sustainability relies only on identifying a modest and reasonably secure source of funds to maintain an asset.

44. Other, more complicated and typically higher value, projects (such as South Park Community 3G Pitch) rely on generating sustainable levels of ongoing income to cover management, operation, maintenance and ultimately replacement of the asset funded by the grant. The sustained delivery of project benefits also relies on the commitment and longevity of the organisation operating the asset. A level of risk in the ongoing delivery of benefits from these schemes is inevitable and despite officers gaining assurance that mitigations are in place, success cannot be absolutely guaranteed for each individual project.

- 45. The commercial assessment is set out in paragraphs 29 - 31, along with a summary of risk and mitigations set out in paragraphs 37 and 38. These factors, set out alongside the expected benefits of the project have been scrutinised and challenged by officers and are deemed acceptable in this instance. An important consideration is that Your Fund Surrey is a key part of the Council's Empowering Community approach focused upon enabling communities through investing in a meaningful and lasting way. Therefore, the success of Your Fund Surrey will set against establishing a different relationship with communities, empowering them to be more self-reliant. In forging that relationship, the success of individual projects will vary within the benefits delivered by the programme as a whole. Learning points from successful and unsuccessful projects will be taken and used to inform the development and evolution of the fund over time.
- 46. The borrowing costs associated with the fund have been fully built into the Council's Medium-Term Financial Strategy.

Legal implications – Monitoring Officer:

- 47. The report sets out the information and steps for the consideration of the application further to the Council's governance arrangements for Your Fund Surrey.
- 48. Further to those arrangements, if approved, the Council and the organisation will enter into a comprehensive funding agreement which will include the performance measures that will be put in place to ensure the funding is used as intended as well as clearly describing any support or additional conditions agreed as part of the funding award.

Equalities and Diversity:

- 49. This application to Your Fund Surrey will have a positive impact Equalities and Diversity, the club has made a commitment in relation to the development and use of this facility to effectively grow women, girls and disability football within the locality. The location of the facility is in SouthPark which is an area of greater challenge and need. The proposed investment within this locality is consistent with the Council's no one left behind agenda.
- 50. Your Fund is designed to provide investment in schemes that encourage community participation, reduce isolation, and develop the potential for social wellbeing and economic prosperity. As such it is anticipated that it will have a positive impact on a number of those who may rely on or gain support from within the local community and those within protected characteristics that may be more likely to experience social and economic exclusion.
- 51. An Equalities Impact Assessment has been produced for YFS and was circulated as an Annex to the YFS Cabinet Report 26th January 2021.

Other Implications:

- 52. The potential implications for the following council priorities and policy areas have been considered. Where the impact is potentially significant a summary of the issues is set out in detail below.

Area assessed:	Direct Implications:
Corporate Parenting/Looked After Children	No direct implications
Safeguarding responsibilities for vulnerable children & adults	Safeguarding is the responsibility of South Park Sports Association and the constituent clubs.

Environmental sustainability	Reduction in travelling time and journeys for local residents Construction material being kept on site in a bund Reduction in pesticide and water use on artificial pitch
Public Health	The project has a positive impact on wider health determinants with specific reference to inclusivity including women & girls and people with disabilities. This project will make an overall contribution to the health of a wide range of residents.

What Happens Next:

- Following the advisory panel, a dedicated Officer decision report will be produced for consideration by the Cabinet Member for Communities, incorporating the comments of the Advisory Panel.
- Following Delegated Cabinet Member approval of the funding a notice of the records of decisions taken under delegated power, will be published within 3 days of the decision being made. A note of this decision will be included in the next Cabinet report update of Your Fund Surrey.
- Officers will prepare the relevant schedules and funding agreements to enable payment of funds and monitoring and evaluation of the project against its outcomes.
- The YFS Team officers will then issue a provisional offer of funding to the applicant, including a copy of the draft Funding Agreement incorporating any additional conditions.

Report Authors:

Samantha Mills, yourfund@surreycc.gov.uk

Patrick Culligan, yourfund@surreycc.gov.uk

Beth Coley, yourfund@surreycc.gov.uk

James Painter, james.painter@surreycc.gov.uk

Consulted:

Division County Councillor

Corporate Finance – Surrey County Council

Annexes:

Annex 1: Project Location

Annex 2: Summary Scoring Comments

Annex 3: Commonplace Summary Report

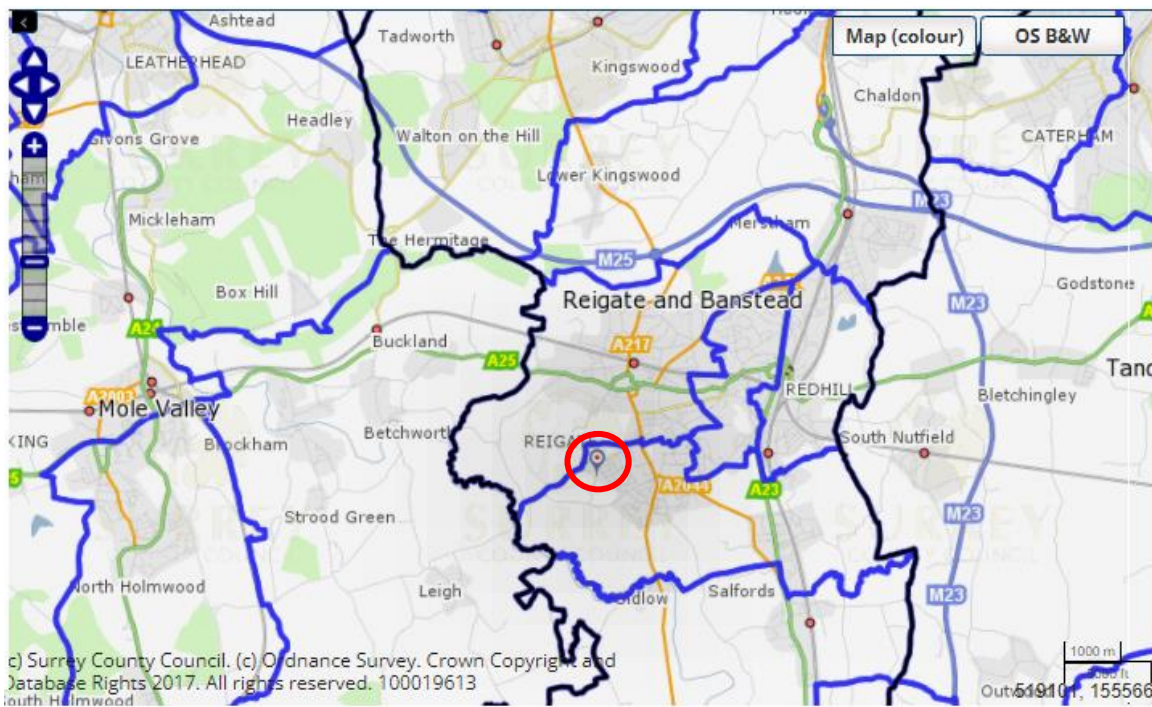
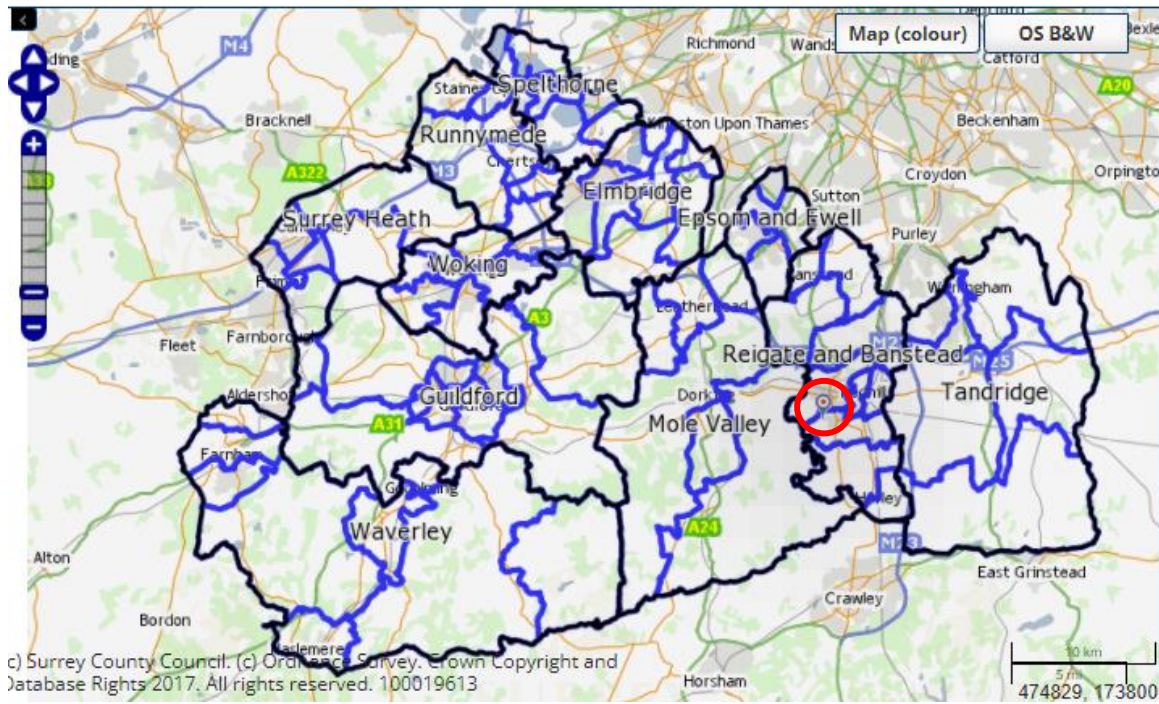
Sources/background papers:

YFS Criteria

YFS Governance Document

Annex 1 – Project Location

Location (map)



Annex 2: Summary Scoring Comments

Criteria 1 - How will the project be delivered?

- Well planned project, robust assessment of tenders by professional agency, supported by FF preferred suppliers process. However, the risk assessment is sparse, only 5 identified.
- Solid maintenance plan and business plan to finance this. Volunteer/part time grounds maintenance staff in place with training identified to support their maintenance of the site. Professional services will be brought in periodically – all part of conditions set by the FF.
- All other funding is in place to begin the project, the supplier has been identified through a rigorous tender process. Costs are in range of what is expected for this type of project and all suppliers considered are recommended by the FF. The project can mobilise quickly if funded by YFS.

Criteria 2 - Is there any additional help needed to run, the project?

- Strong volunteer management committee and project steering group in place, modest amount of additional volunteer support to get the project to where it is currently. However, there is opportunity for increased volunteer input following the inclusion of new organisations.
- Significant financial support from FF and strategic support from Reigate and Banstead Borough Council.
- Usage plan demonstrates a variety of users however there is a need for FF and the Borough Council to ensure community usage remains important.

Criteria 3 - What are the long-term benefits?

- Clear need established through the Local Football Facilities Plan which has identified a shortfall of 7 full size AGPs in R&B. This project would contribute to addressing that.
- The commitment from the club to grow women, girls and disability football is strongly linked to tackling health inequality. The project has a robust business plan and has budget set aside for comprehensive maintenance programme as well as a decent sinking fund.
- The evaluation plan could be stronger, however a development plan that was produced in conjunction with the FF offers reassurance that the community benefit will be durable.

Criteria 4 - Does it make a positive difference to people's lives?

- The need and benefit are clearly demonstrated through the Local Football Facility Plan and the usage plan.
- Several new community-based football teams and initiatives will be able to run from the venue. Robust consultation and engagement with the wider community has been completed.
- Key partnerships with FF and Reigate & Banstead Borough Council will ensure the project is linked to key priorities in the local area, ensuring positive impact for local people.

Criteria 5 - Has the environmental impact of the project been considered?

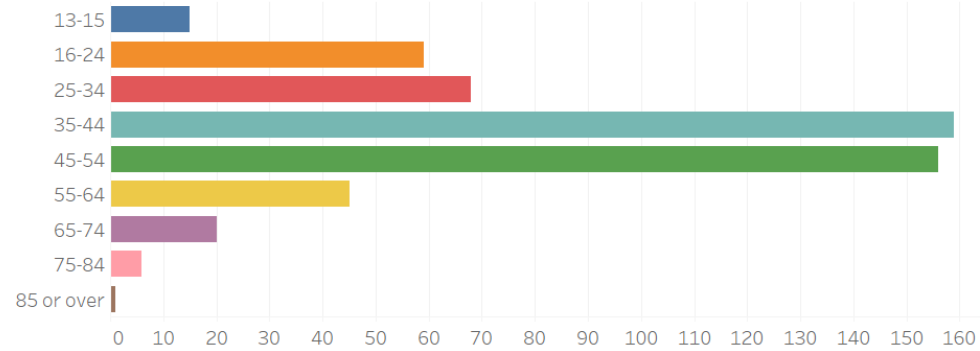
- The spoil from the build will be retained on site and turned into a bund rather than transported off site and disposed of. However, lack of detail for this within project plan.
- Reduction in water and pesticide usage in comparison to a grass pitch.

Annex 3. Commonplace Summary Report

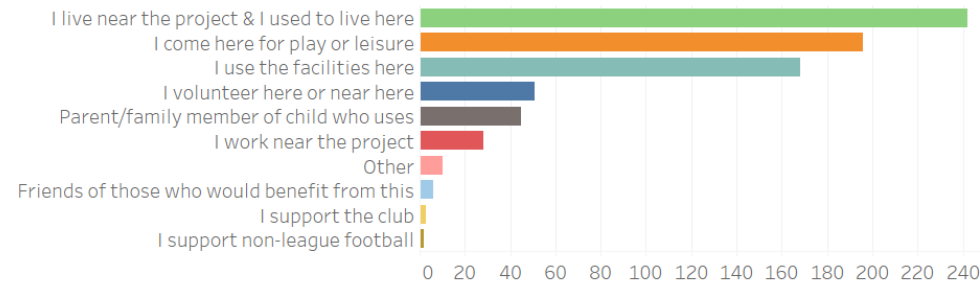
Commonplace Engagement Report- Spath Park Sports Association Respondent Demographics

Number of respondents: 773

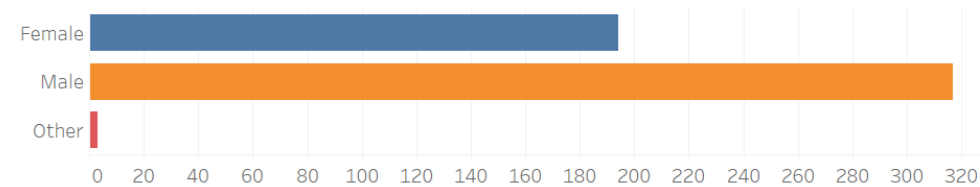
Age Group



Connection to the project

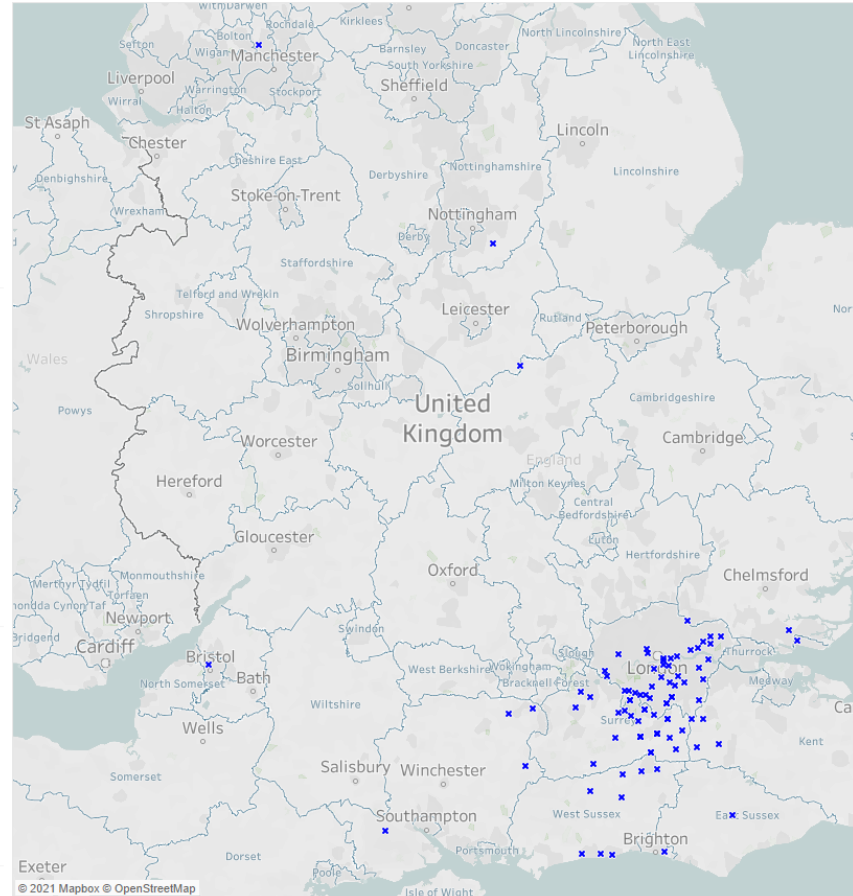


Gender



Map

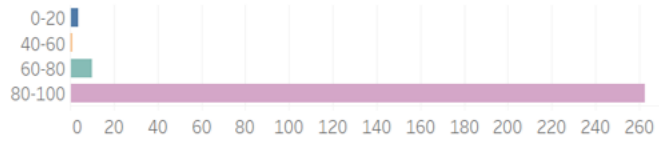
Each cross indicates a rough location from which people responded.



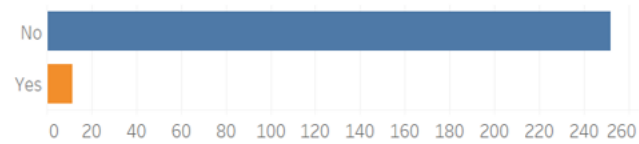
Annex 3. Commonplace Summary Report

Key Findings

How important do you feel the project is?



Is there anything else like this in the local area?



The following projects were identified as being similar to the proposed project:

- 3G pitch at Reigate School but access is limited .
- Dorking Wanderers
- Goals Cheam

This page is intentionally left blank