

## **Education needs analysis of primary school places in Reigate and neighboring areas.**

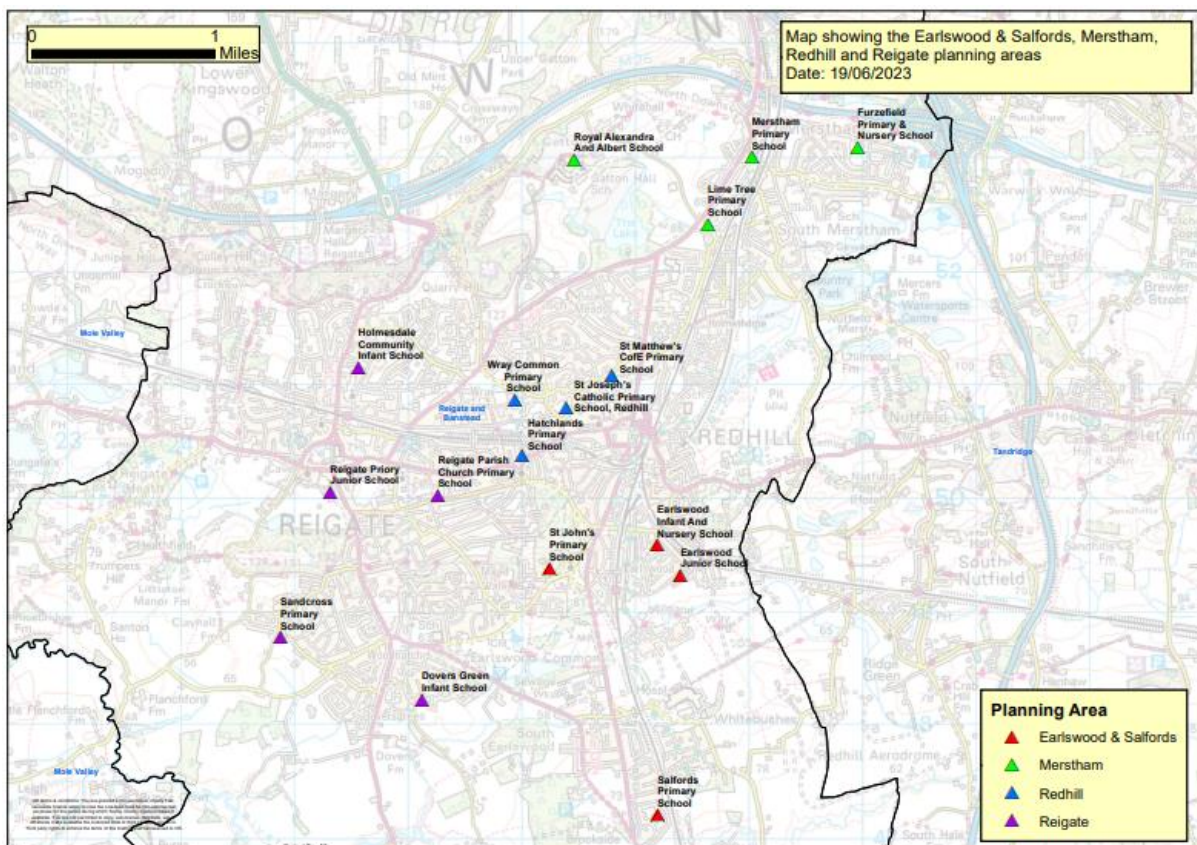
This document is an updated version of [Annex 4](#) of the consultation papers for provision of primary school places in Reigate, published on 27 November 2023. The previous version was based on data from the School Census in January 2023 and forecasts produced in November 2022; this version is updated with data from the School Census in October 2023 and forecasts produced at the end of December 2023.

### **Current situation**

Reigate Priory Junior School is in the pupil planning area of Reigate. The neighbouring pupil planning areas are Redhill, Earlswood & Salfords, and Merstham. A pupil planning area is a group of schools within the local authority which is used for the purpose of assessing current and future pupil demand for school place provision.

The map below shows Reigate primary pupil planning area and neighbouring pupil planning areas within Reigate & Banstead.

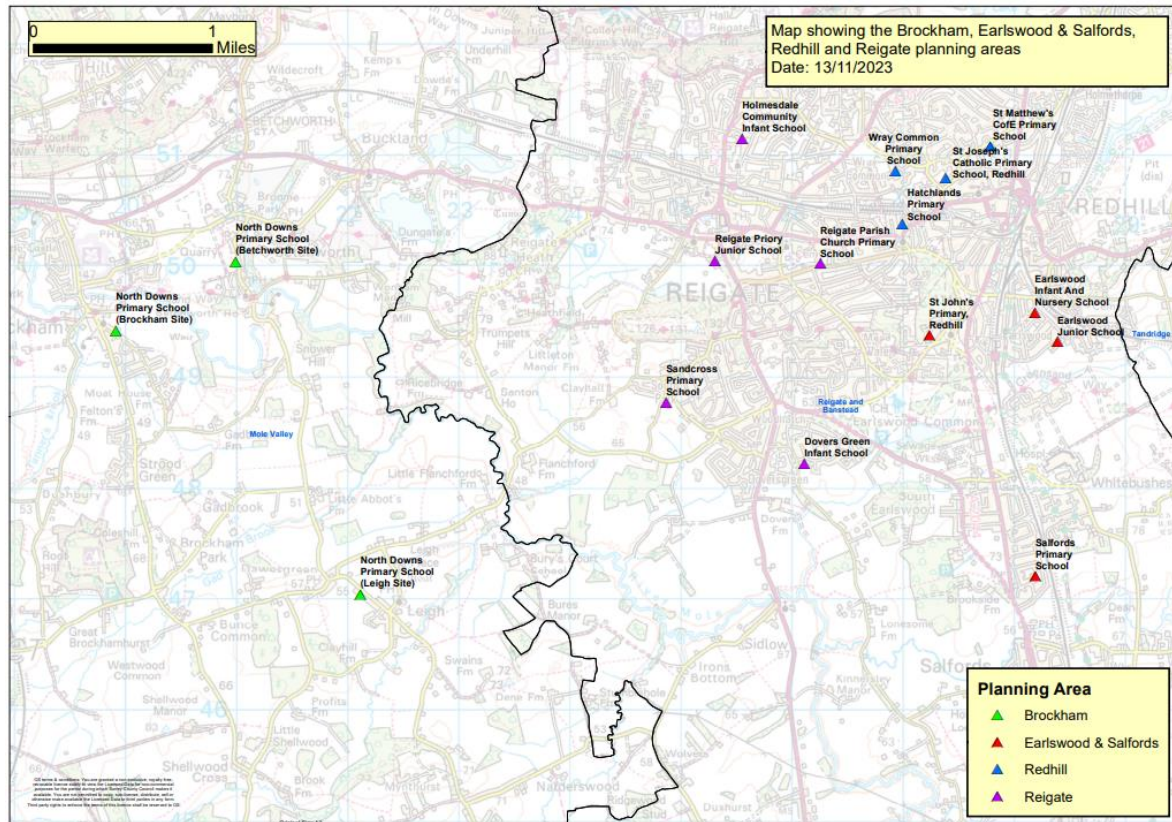
**Map 1: Primary planning areas map – Reigate, Redhill, Earlswood & Salfords and Merstham**



10

**Map 2** below shows the planning area of Brockham which is the nearest planning area to the west of Reigate. North Downs Primary School is a two-form entry school on three sites shown below. All pupils in years 3 to year 6 are based at the Brockham site which is over 5 miles away from schools in the Reigate planning area. A small number of pupils who live in the wards of Reigate and South Park & Woodhatch attend North Downs Primary School.

**Map 2: Primary planning areas map – Reigate, Redhill, Earlswood & Salfords and Brockham**



## Sustainability Strategy and School Organisation Plan

The [Sustainability Strategy](#) sets out Surrey County Council's approach and commitment to ensuring the sustainability of all our settings and schools. Following national trends, falling birth rates mean that the number of school places needed is expected to fall in primary schools in most areas across Surrey over the forecast period. As schools receive per pupil funding and plan staffing and resources based on their published admission number (PAN), if there are too many school places in an area schools become vulnerable to financial difficulties. Therefore, Surrey County Council shares forecasts annually with schools across planning areas to consider increasing or reducing the number of places in an area.

The [School Organisation Plan 2022-2032](#) sets out Surrey County Council's plans for providing education close to home. It highlights the likely demand for school places over a 10-year forecast period and likely strategies or changes that may be required

to both meet the statutory duty to provide sufficient school places and ensure the sustainability of all schools. Admission Authorities publish admission arrangements annually and any reduction in PAN is subject to public consultation in line with the [School Admissions Code 2021](#).

## Current capacity in the Reigate planning area

There are 5 schools in the primary planning area of Reigate. 2 Infant Schools, 1 Junior School and 2 Primary Schools (1 with an additional intake in Year 3).

There is capacity for 11 forms of entry (330 places per year group) across the 5 schools. The forecasts show a sustained need for 10 forms of entry in the area (300 places per year group). 7% vacant places were reported across all schools in the planning area in the School Census October 2023. The number of pupils is lower in year R to 2 following a fall in birth-rates hence the reduction in PAN at Holmesdale Community Infant School from September 2023. This is expected to stabilise, forecasting a need for around 300 places in Year R over the forecast period.

**Figure 1: School census October 2023 – number of pupils at schools in the Reigate planning area**

|   | Yr R | Yr 1 | Yr 2 | Yr 3 | Yr 4 | Yr 5 | Yr 6 | Yr R - Yr 6 |
|---|------|------|------|------|------|------|------|-------------|
| Total Number of pupils in planning area | 284  | 308  | 297  | 306  | 313  | 311  | 318  | <b>2137</b> |
| Capacity                                | 330  | 330  | 330  | 330  | 330  | 330  | 330  | <b>2310</b> |
| Vacant Primary Places                   | 46   | 22   | 33   | 24   | 17   | 19   | 12   | <b>173</b>  |
| Vacant Primary Places (%)               | 14%  | 7%   | 10%  | 7%   | 5%   | 6%   | 4%   | <b>7%</b>   |

## Current capacity in the Redhill planning area

Redhill planning area is the closest neighbouring area to north Reigate and Holmesdale Community Infant School. There is capacity for 9 forms of entry (270 places per year group) across the 4 schools. The School Census October 2023 shows that currently with 9 forms of entry in the area there is 8% vacant places across all schools. The number of pupils is lower in year R to 2 following a fall in birth-rates. The forecasts predict between 1 to 2 forms of entry surplus places in year R over the forecast period.

**Figure 2: School census October 2023 – number of pupils at schools in the Redhill planning area**

|   | Yr R | Yr 1 | Yr 2 | Yr 3 | Yr 4 | Yr 5 | Yr 6 | Yr R - Yr 6 |
|---|------|------|------|------|------|------|------|-------------|
| Total Number of pupils in planning area | 245  | 247  | 249  | 262  | 245  | 234  | 229  | <b>1711</b> |
| Planned Primary Places                  | 270  | 270  | 270  | 270  | 270  | 270  | 240  | <b>1860</b> |
| Vacant Primary Places                   | 25   | 23   | 21   | 8    | 25   | 36   | 11   | <b>149</b>  |
| Vacant Primary Places (%)               | 9%   | 9%   | 8%   | 3%   | 9%   | 13%  | 5%   | <b>8%</b>   |

## Forecasts for the Reigate primary planning area

The table below shows the number of children expected to come forward into Reception and year 3 over the forecast period, alongside the number of places available in those year groups across all schools in the planning area of Reigate.

The forecasts include demographic trends, the birth rate and mid-year population estimates, and the effects of pupil movement trends (between schools, in and out of boroughs/districts/county etc) as well as additional pupil yield from housing calculated from housing permissions and trajectories provided by the borough/district council. This projection shows forecast pupil numbers if all housing comes forward as and when planned, but this cannot be guaranteed.

The school-based report allows us to show how many pupils are predicted to need a mainstream school place across a group of schools in a planning area. Residence based reports are included later in this document and allow us to show how many pupils living in a ward in Surrey are expected to need a mainstream school place across the whole of Surrey.

**Figure 3: Number of places forecast in year R and year 3 from Sept 2024 to Sept 2032 (Edge forecasts published December 2023)**

| Reigate     |               |                 |                   |               |                 |                   |
|-------------|---------------|-----------------|-------------------|---------------|-----------------|-------------------|
| School year | Year R places | Year R Forecast | Surplus / Deficit | Year 3 places | Year 3 Forecast | Surplus / Deficit |
| 2024-25     | 300           | 267             | 33                | 330           | 296             | 34                |
| 2025-26     | 300           | 302             | -2                | 330           | 303             | 27                |
| 2026-27     | 300           | 292             | 8                 | 330           | 286             | 44                |
| 2027-28     | 300           | 293             | 7                 | 330           | 263             | 67                |
| 2028-29     | 300           | 294             | 6                 | 330           | 298             | 32                |
| 2029-30     | 300           | 294             | 6                 | 330           | 290             | 40                |
| 2030-31     | 300           | 293             | 7                 | 330           | 292             | 38                |
| 2031-32     | 300           | 293             | 7                 | 330           | 292             | 38                |
| 2032-33     | 300           | 291             | 7                 | 330           | 290             | 40                |

| School name                            | Year R Places | Year 3 Places |
|--|---------------|---------------|
| Holmesdale Community Infant School     | 90            |               |
| Dovers Green School                    | 90            |               |
| Reigate Priory Community Junior School |               | 150           |
| Sandcross Primary School               | 60            | 120           |
| Reigate Parish Church Primary School   | 60            | 60            |
| <b>Total places in planning area</b>   | <b>300</b>    | <b>330</b>    |

It is noted that due to a decline in birth rates Holmesdale Community Infant School reduced from 4 forms of entry (Published Admission Number (PAN) of 120) to 3 forms of entry (Published Admission Number (PAN) of 90). Therefore, the number of places in year R reduced from 330 to 300 in the primary planning area of Reigate in September 2023. It is being considered whether there should a reduction of junior places in Sept 2026 to match the reduced number of infant places from Sept 2023. Any reduction in PAN would be subject to consultation in line with the [School Admissions Code](#). A reduction in PAN is not permanent and admission authorities can increase back to the original capacity in future years.

## Neighbouring planning areas

**Figure 4** shows the forecasts for the four primary planning areas closest to Reigate. There are expected to be 18% to 22% surplus places in year R in Redhill over the forecast period, 5% to 18% in Earlswood & Salfords, 0% to 20% in Merstham and -6% to 25% in Brockham. The forecasts below are school based which means they predict the number of pupils who are expected to need a school place across a

group of schools. As there is over 1 form of entry surplus places forecast in Redhill, schools in this area may need to consider reducing their published admission number. The forecasts are based on trends in pupil movement. As the number of places available increases pupil movement is likely to change based on parental preference. In the short-term there may be a need to reduce the number of places across Reigate and the three planning areas below to ensure schools are sustainable. However, the later years of the forecast are less accurate, and it is not yet known if there will be a long-term need to reduce the number of places across the 4 planning areas. It is Important to maintain capacity for future years when numbers could increase.

**Figure 4: Number of places forecast in year R and year 3 from Sept 2024 to Sept 2032 in neighbouring planning areas (Edge forecasts published December 2023)**

| Redhill     |               |                 |                   |               |                 |                   |
|-------------|---------------|-----------------|-------------------|---------------|-----------------|-------------------|
| School year | Year R places | Year R Forecast | Surplus / Deficit | Year 3 places | Year 3 Forecast | Surplus / Deficit |
| 2024-25     | 270           | 212             | 58                | 270           | 239             | 31                |
| 2025-26     | 270           | 232             | 38                | 270           | 242             | 28                |
| 2026-27     | 270           | 225             | 45                | 270           | 252             | 18                |
| 2027-28     | 270           | 224             | 46                | 270           | 215             | 55                |
| 2028-29     | 270           | 224             | 46                | 270           | 236             | 34                |
| 2029-30     | 270           | 222             | 48                | 270           | 229             | 41                |
| 2030-31     | 270           | 221             | 49                | 270           | 229             | 41                |
| 2031-32     | 270           | 221             | 49                | 270           | 227             | 43                |
| 2032-33     | 270           | 220             | 49                | 270           | 224             | 46                |

| School name                                  | Year R places | Year 3 places |
|--|---------------|---------------|
| St Matthew's CofE Primary School             | 60            | 60            |
| Hatchlands Primary School                    | 60            | 60            |
| Wray Common Primary School                   | 60            | 60            |
| St Joseph's Catholic Primary School, Redhill | 90            | 90            |
| <b>Total places in planning area</b>         | <b>270</b>    | <b>270</b>    |

| Key                                     |  |
|---|--|
| Over 5 surplus places                   |  |
| Between -5 deficit and 5 surplus places |  |
| Over -5 deficit places                  |  |

| Earlswood & Salfords |               |                 |                   |               |                 |                   |
|----------------------|---------------|-----------------|-------------------|---------------|-----------------|-------------------|
| School year          | Year R places | Year R Forecast | Surplus / Deficit | Year 3 places | Year 3 Forecast | Surplus / Deficit |
| 2024-25              | 210           | 172             | 38                | 210           | 158             | 52                |
| 2025-26              | 210           | 199             | 11                | 210           | 192             | 18                |
| 2026-27              | 210           | 193             | 17                | 210           | 187             | 23                |
| 2027-28              | 210           | 193             | 17                | 210           | 162             | 48                |
| 2028-29              | 210           | 192             | 18                | 210           | 188             | 22                |
| 2029-30              | 210           | 191             | 19                | 210           | 182             | 28                |
| 2030-31              | 210           | 191             | 19                | 210           | 182             | 28                |
| 2031-32              | 210           | 191             | 19                | 210           | 180             | 30                |
| 2032-33              | 210           | 190             | 19                | 210           | 179             | 31                |

| School name                          | Year R places | Year 3 places |
|--------------------------------------|---------------|---------------|
| Salfords Primary School              | 60            | 60            |
| Earlswood Infant and Nursery School  | 120           |               |
| Earlswood Junior School              |               | 120           |
| St John's Primary School             | 30            | 30            |
| <b>Total places in planning area</b> | <b>210</b>    | <b>210</b>    |

| Key                                     |  |
|---|--|
| Over 5 surplus places                   |  |
| Between -5 deficit and 5 surplus places |  |
| Over -5 deficit places                  |  |

| Merstham    |               |                 |                   |               |                 |                   |
|-------------|---------------|-----------------|-------------------|---------------|-----------------|-------------------|
| School year | Year R places | Year R Forecast | Surplus / Deficit | Year 3 places | Year 3 Forecast | Surplus / Deficit |
| 2024-25     | 148           | 119             | 29                | 208           | 154             | 54                |
| 2025-26     | 148           | 147             | 1                 | 208           | 153             | 55                |
| 2026-27     | 148           | 141             | 7                 | 208           | 149             | 59                |
| 2027-28     | 148           | 140             | 8                 | 208           | 131             | 77                |
| 2028-29     | 148           | 139             | 9                 | 208           | 161             | 47                |
| 2029-30     | 148           | 137             | 11                | 208           | 156             | 52                |
| 2030-31     | 148           | 135             | 13                | 208           | 154             | 54                |
| 2031-32     | 148           | 133             | 15                | 208           | 152             | 56                |
| 2032-33     | 148           | 131             | 15                | 208           | 149             | 59                |

| School name                          | Year R places | Year 3 places |
|--------------------------------------|---------------|---------------|
| Lime Tree Primary School             | 60            | 60            |
| Merstham Primary School              | 30            | 30            |
| Furzeffield Primary School           | 60            | 60            |
| Royal Alexandra and Albert School    |               | 60            |
| <b>Total places in planning area</b> | <b>150</b>    | <b>210</b>    |

| Key                                     |  |
|---|--|
| Over 5 surplus places                   |  |
| Between -5 deficit and 5 surplus places |  |
| Over -5 deficit places                  |  |

| Brockham    |               |                 |                   |               |                 |                   |
|-------------|---------------|-----------------|-------------------|---------------|-----------------|-------------------|
| School year | Year R places | Year R Forecast | Surplus / Deficit | Year 3 places | Year 3 Forecast | Surplus / Deficit |
| 2024-25     | 60            | 64              | -4                | 64            | 64              | 0                 |
| 2025-26     | 60            | 48              | 12                | 64            | 65              | -1                |
| 2026-27     | 60            | 48              | 12                | 64            | 56              | 8                 |
| 2027-28     | 60            | 48              | 12                | 64            | 69              | -5                |
| 2028-29     | 60            | 47              | 13                | 64            | 54              | 10                |
| 2029-30     | 60            | 47              | 13                | 64            | 53              | 11                |
| 2030-31     | 60            | 46              | 14                | 64            | 53              | 11                |
| 2031-32     | 60            | 46              | 14                | 64            | 53              | 11                |
| 2032-33     | 60            | 45              | 15                | 64            | 52              | 12                |

| School name                          | Year R Places | Year 3 Places |
|--------------------------------------|---------------|---------------|
| North Downs Primary School           | 60            | 4             |
| <b>Total places in planning area</b> | <b>60</b>     | <b>4</b>      |

| Key                                     |  |
|---|--|
| Over 5 surplus places                   |  |
| Between -5 deficit and 5 surplus places |  |
| Over -5 deficit places                  |  |

## Residence Based Forecasts

The residence-based report shows pupils living in a particular ward who are expected to need a mainstream school place anywhere in Surrey. Only pupils expected to attend mainstream schools in Surrey are included. Pupils expected to attend schools in neighbouring boroughs within Surrey County Council are included but pupils expected to attend a specialist school or SEN (Special Educational Needs) Unit in Surrey or attend any out of county or independent school are not included.

**Figure 5** shows the number of year R pupils living in each of the local wards surrounding Reigate who attended any mainstream school in Surrey in the previous 4 years and what the expected change is over the next 4 years. The table shows there is expected to be a decrease in the number of places needed in all wards represented on the table apart from Redhill East.

**Figure 5: Residence based report showing number of pupils in year R living in each ward who attended a mainstream school in Surrey in the last 4 years against the number forecast to need a year R place for the next 4 years.**

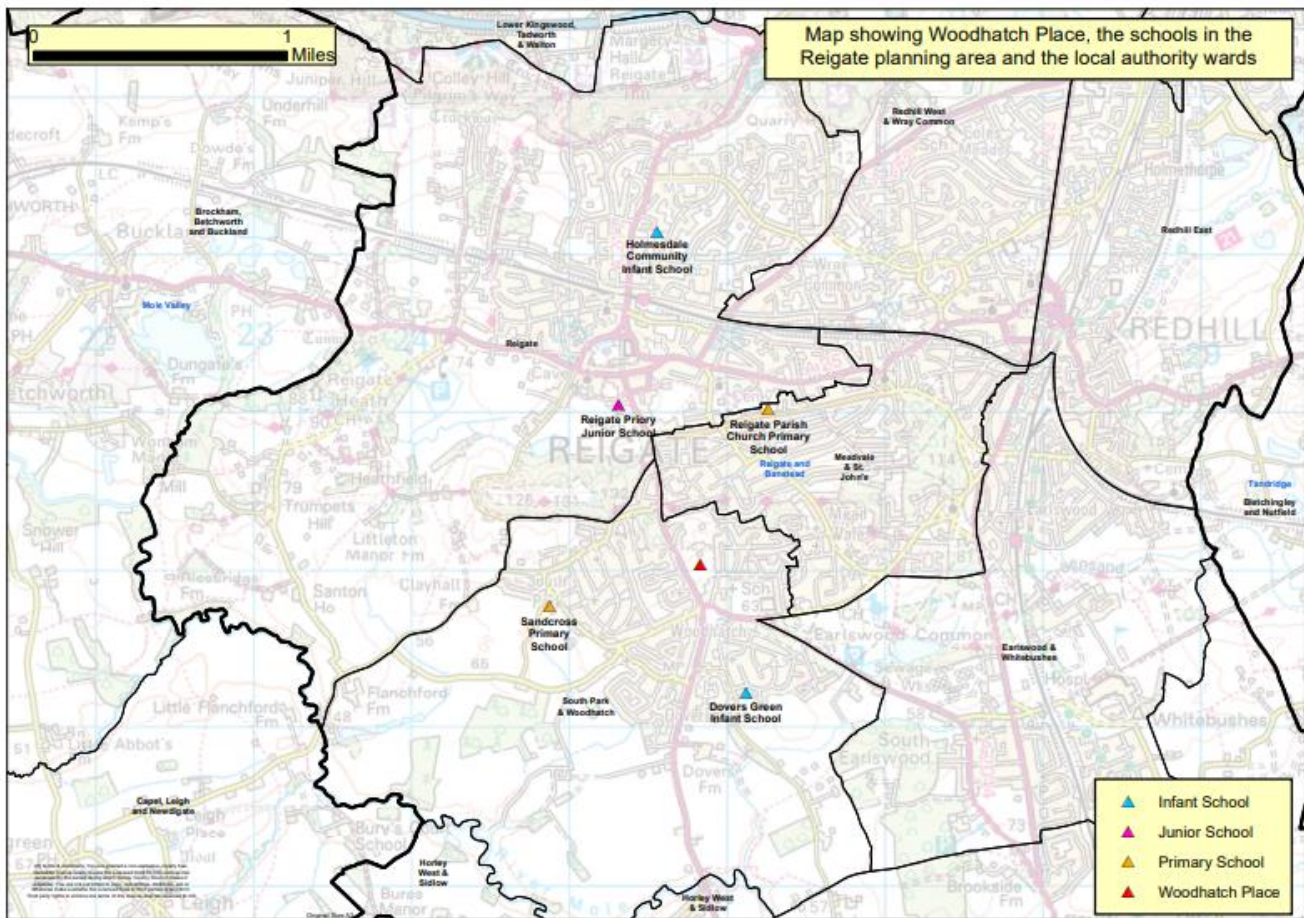
| Planning Area        | Ward                        | 2020-21    | 2021-22    | 2022-23    | 2023-24    | 2024-25    | 2025-26    | 2026-27    | 2027-28    | Averages    |            | Increase         |            |
|----------------------|-----------------------------|------------|------------|------------|------------|------------|------------|------------|------------|-------------|------------|------------------|------------|
|                      |                             |            |            |            |            |            |            |            |            | 2020 - 2023 | 2024-2028  | Number of pupils | Percent    |
| Reigate              | South Park & Woodhatch      | 126        | 150        | 108        | 90         | 94         | 112        | 109        | 109        | 118.6       | 105.9      | -12.7            | -11%       |
|                      | Meadvale & St John's        | 111        | 93         | 96         | 88         | 84         | 93         | 89         | 88         | 97.0        | 88.7       | -8.3             | -9%        |
|                      | Reigate                     | 100        | 83         | 90         | 103        | 85         | 95         | 92         | 93         | 93.9        | 91.4       | -2.6             | -3%        |
|                      | <b>Totals</b>               | <b>337</b> | <b>326</b> | <b>294</b> | <b>281</b> | <b>263</b> | <b>300</b> | <b>290</b> | <b>291</b> | <b>309</b>  | <b>286</b> | <b>-24</b>       | <b>-8%</b> |
| Redhill              | Redhill East                | 134        | 119        | 116        | 126        | 115        | 143        | 138        | 136        | 123.8       | 133.3      | 9.5              | 8%         |
|                      | Redhill West & Wray Common  | 106        | 118        | 132        | 138        | 109        | 104        | 101        | 102        | 123.5       | 104.0      | -19.5            | -16%       |
|                      | <b>Totals</b>               | <b>240</b> | <b>237</b> | <b>248</b> | <b>264</b> | <b>225</b> | <b>247</b> | <b>239</b> | <b>238</b> | <b>247</b>  | <b>237</b> | <b>-10</b>       | <b>-4%</b> |
| Earlswood & Salfords | Earlswood & Whitebushes     | 133        | 111        | 142        | 143        | 116        | 137        | 134        | 134        | 132.4       | 130.0      | -2.4             | -2%        |
| Merstham             | Hooley, Merstham & Netherne | 125        | 132        | 134        | 124        | 105        | 135        | 129        | 128        | 128.7       | 124.1      | -4.6             | -4%        |

**Figure 6** shows the number of year R pupils living in each of the local wards surrounding Reigate who attended any mainstream school in Surrey in the previous 4 years and the forecasts up to 2031/32. The table shows there is expected to be a decrease in the number of places needed by pupils in most wards represented on the table, between the first year of the forecast (2023/24) and the last year (2032/33). The only area with an increase is the wards close to the pupil planning area of Reigate, however this is based on a 16% expected increase in Southpark & Woodhatch which is following a decrease in numbers and not expected to increase to pupil numbers in 2020/21 and 2021/22.

**Figure 6: Residence based report showing number of pupils in year R living in each ward who attended a mainstream school in Surrey in the last 3 years and the forecasts for up to 2032/33**

| Planning Area        | Ward                        | 2020-21    | 2021-22    | 2022-23    | 2023-24    | 2024-25    | 2025-26    | 2026-27    | 2027-28    | 2028-29    | 2029-30    | 2030-31    | 2031-32    | 2032-33    | Difference       |             |
|----------------------|-----------------------------|------------|------------|------------|------------|------------|------------|------------|------------|------------|------------|------------|------------|------------|------------------|-------------|
|                      |                             |            |            |            |            |            |            |            |            |            |            |            |            |            | Number of pupils | Percent     |
| Reigate              | South Park & Woodhatch      | 126        | 150        | 108        | 90         | 94         | 112        | 109        | 109        | 111        | 110        | 109        | 107        | 105        | 14               | 16%         |
|                      | Meadvale & St John's        | 111        | 93         | 96         | 88         | 84         | 93         | 89         | 88         | 87         | 86         | 86         | 85         | 85         | -3               | -3%         |
|                      | Reigate                     | 100        | 83         | 90         | 103        | 85         | 95         | 92         | 93         | 94         | 94         | 95         | 96         | 97         | -6               | -5%         |
|                      | <b>Totals</b>               | <b>337</b> | <b>326</b> | <b>294</b> | <b>281</b> | <b>263</b> | <b>300</b> | <b>290</b> | <b>291</b> | <b>292</b> | <b>291</b> | <b>290</b> | <b>289</b> | <b>287</b> | <b>6</b>         | <b>2%</b>   |
| Redhill              | Redhill East                | 134        | 119        | 116        | 126        | 115        | 143        | 138        | 136        | 134        | 133        | 133        | 132        | 130        | 4                | 3%          |
|                      | Redhill West & Wray Common  | 106        | 118        | 132        | 138        | 109        | 104        | 101        | 102        | 102        | 102        | 102        | 102        | 103        | -35              | -26%        |
|                      | <b>Totals</b>               | <b>240</b> | <b>237</b> | <b>248</b> | <b>264</b> | <b>225</b> | <b>247</b> | <b>239</b> | <b>238</b> | <b>237</b> | <b>235</b> | <b>234</b> | <b>234</b> | <b>233</b> | <b>-31</b>       | <b>-12%</b> |
| Earlswood & Salfords | Earlswood & Whitebushes     | 133        | 111        | 142        | 143        | 116        | 137        | 134        | 134        | 133        | 132        | 132        | 132        | 132        | -12              | -8%         |
| Merstham             | Hooley, Merstham & Netherne | 125        | 132        | 134        | 124        | 105        | 135        | 129        | 128        | 127        | 124        | 121        | 118        | 117        | -7               | -5%         |

### Map 3: Map of schools in the primary planning area of Reigate against local wards



10

Reigate Priory Junior School is in the Reigate ward, close to the borders of South Park & Woodhatch, Meadvale & St Johns and Redhill West & Wray Common. The trends across these wards follow national trends in that the number of pupils needing a school place is expected to fall in comparison to the previous 5 years. Both the school-based and residence-based reports show a sustained need for around 300 places per year group (10FE) in the Reigate planning Area.

This page is intentionally left blank