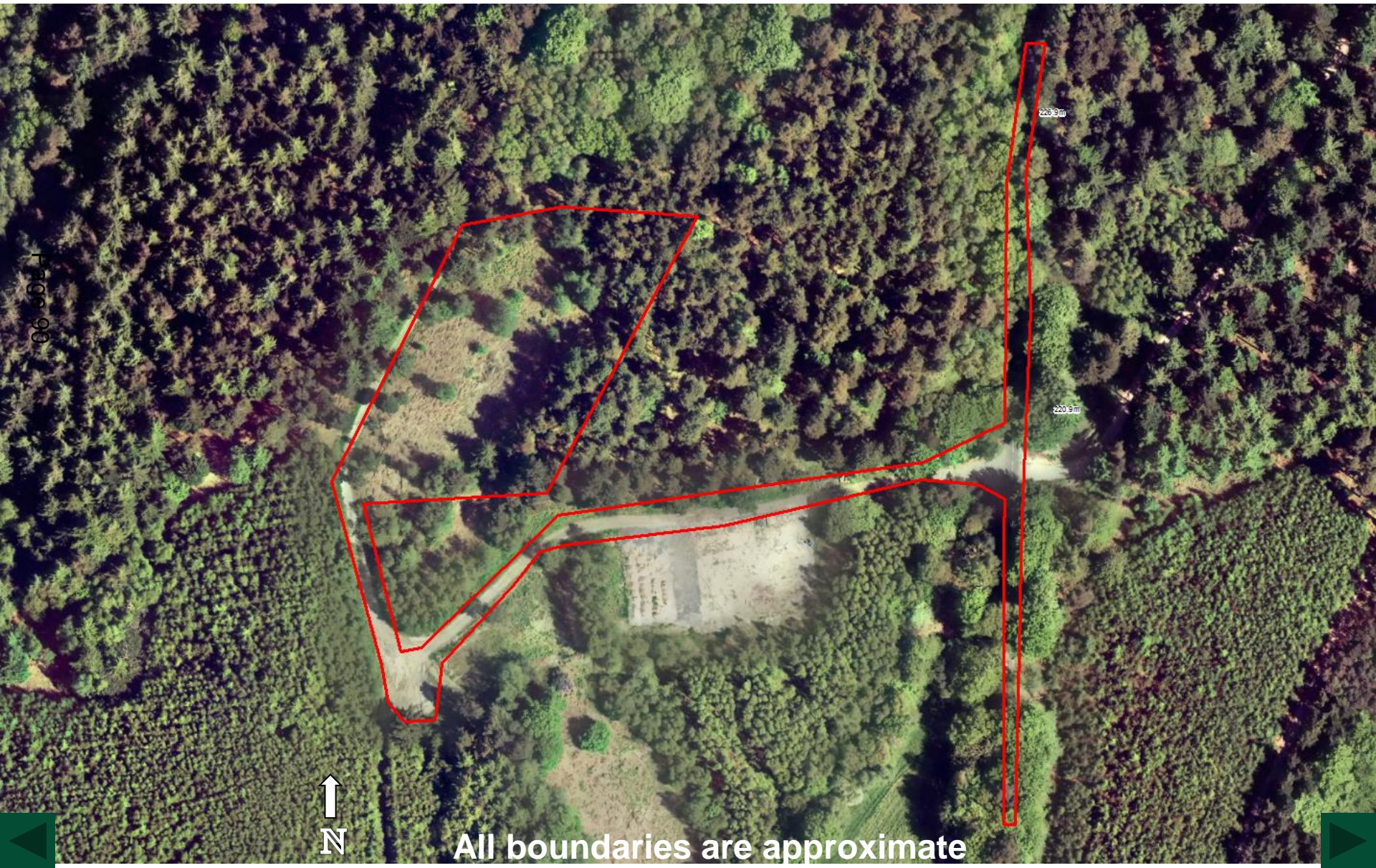


Aerial 1 : Bury Hill Wood



2012-13 Aerial Photos

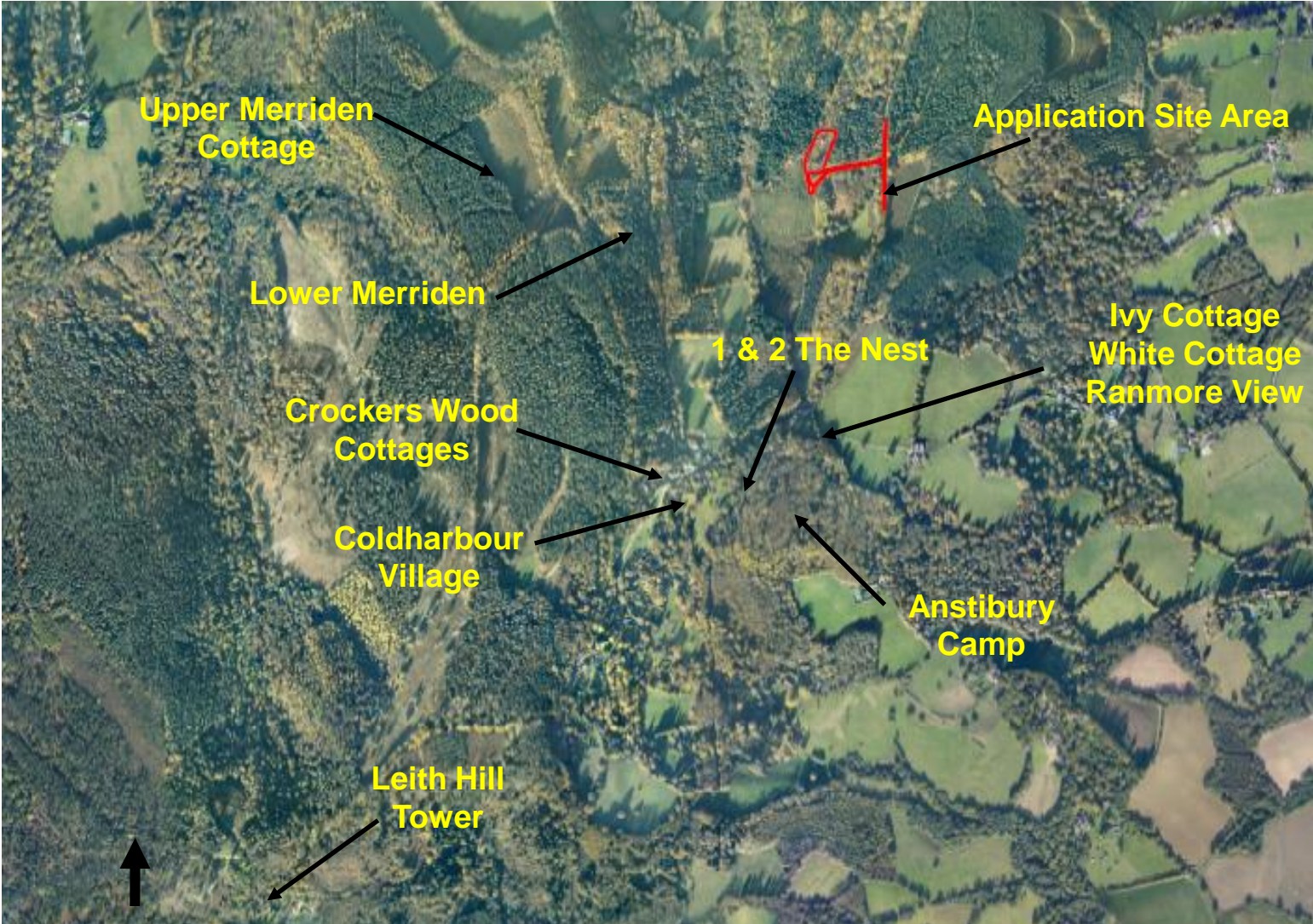
Aerial 2 : Bury Hill Wood



All boundaries are approximate

2012-13 Aerial Photos

Aerial 3 : Bury Hill Wood



Page 91



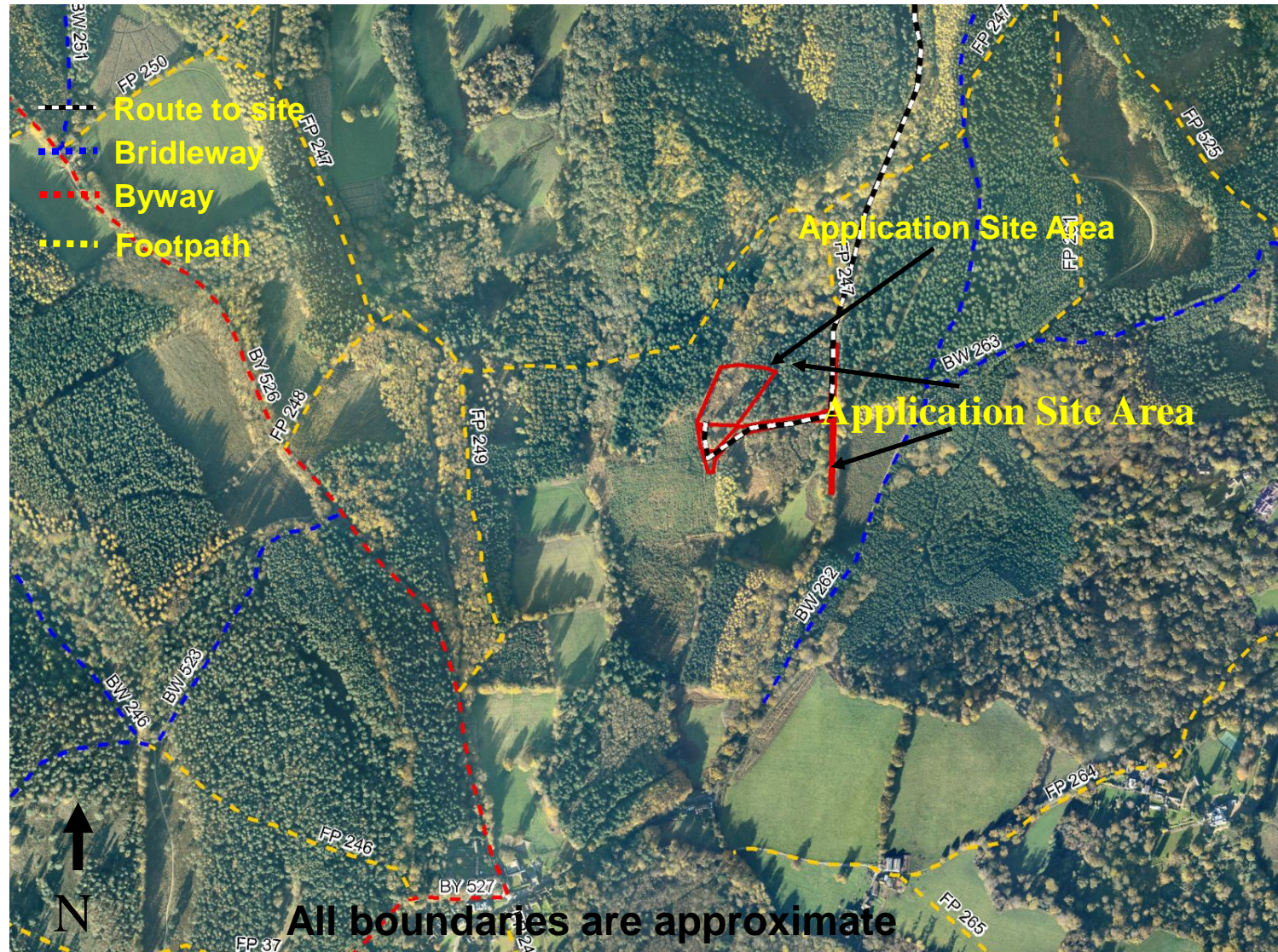
All boundaries are approximate



Aerial 4 : Bury Hill Wood: rights of way network and access route to the site



Page 92



2012-13 Aerial Photos

Aerial 5 : Bury Hill Wood, route to site.

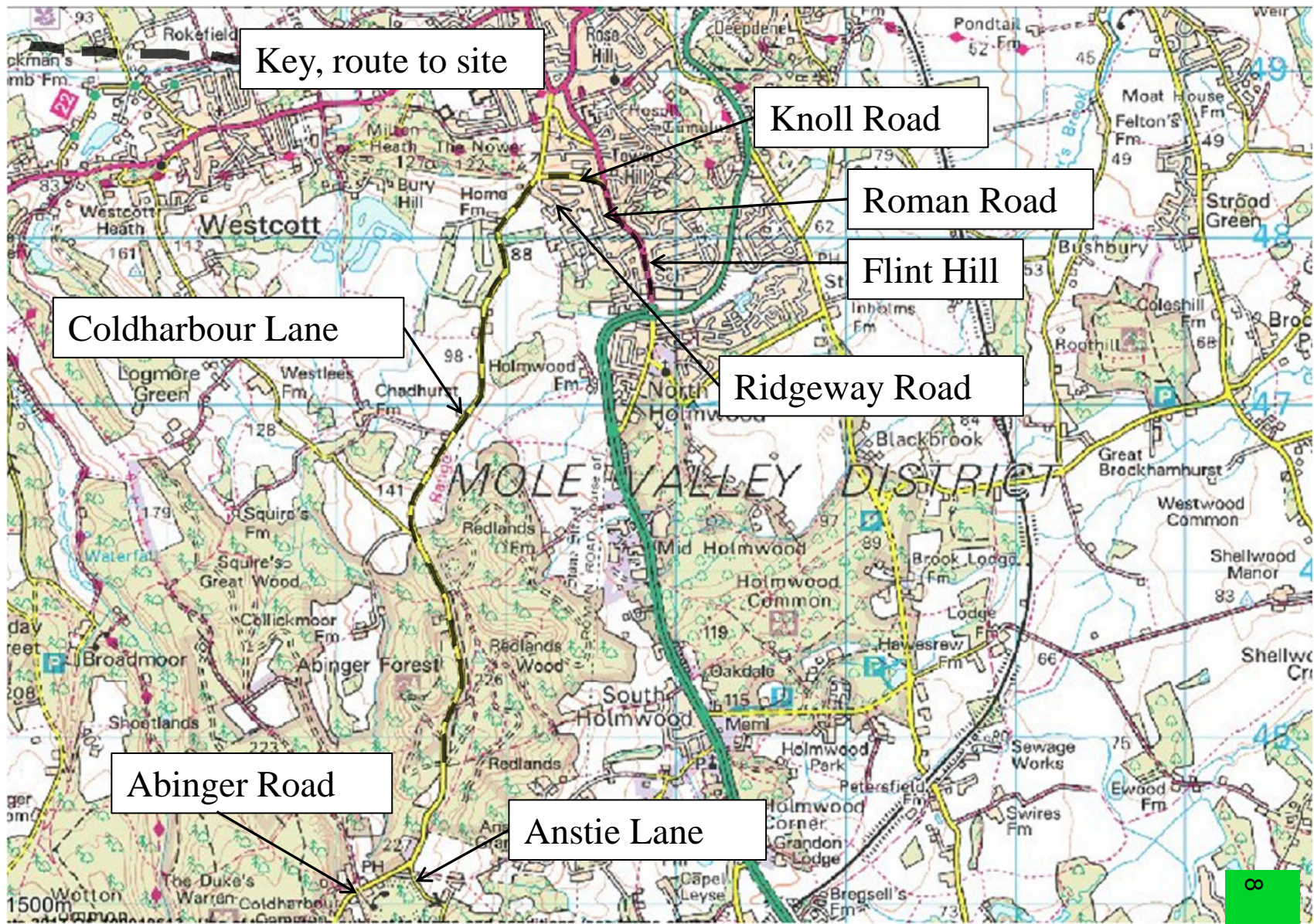




Figure 1 :Knoll Road
looking westwards
towards Coldharbour Lane



Figure 2 :
Knoll Road
looking eastwards



Figure 3 - junction of
Knoll Road
and Ridgeway Road
where the holding bays
would be placed.



Figure 4 - upper part of
Coldharbour Lane
having just left
Knoll Road



Figure 5
the sunken lane section
of Coldharbour Lane

Figure 6
the sunken lane section
of Coldharbour Lane





Figure 7
the sunken lane section
of Coldharbour Lane



Figure 8
the sunken lane section
of Coldharbour Lane

Figure 9 : Coldharbour Lane :



Figure 10 : Site Entrance



This page is intentionally left blank