

Aerial 1 : Watersplash Farm



Aerial 2 : Watersplash Farm



Figure 1 : Panoramic view from Footpath 53 (Fordbridge Road end) of the application site west of the River Ash.

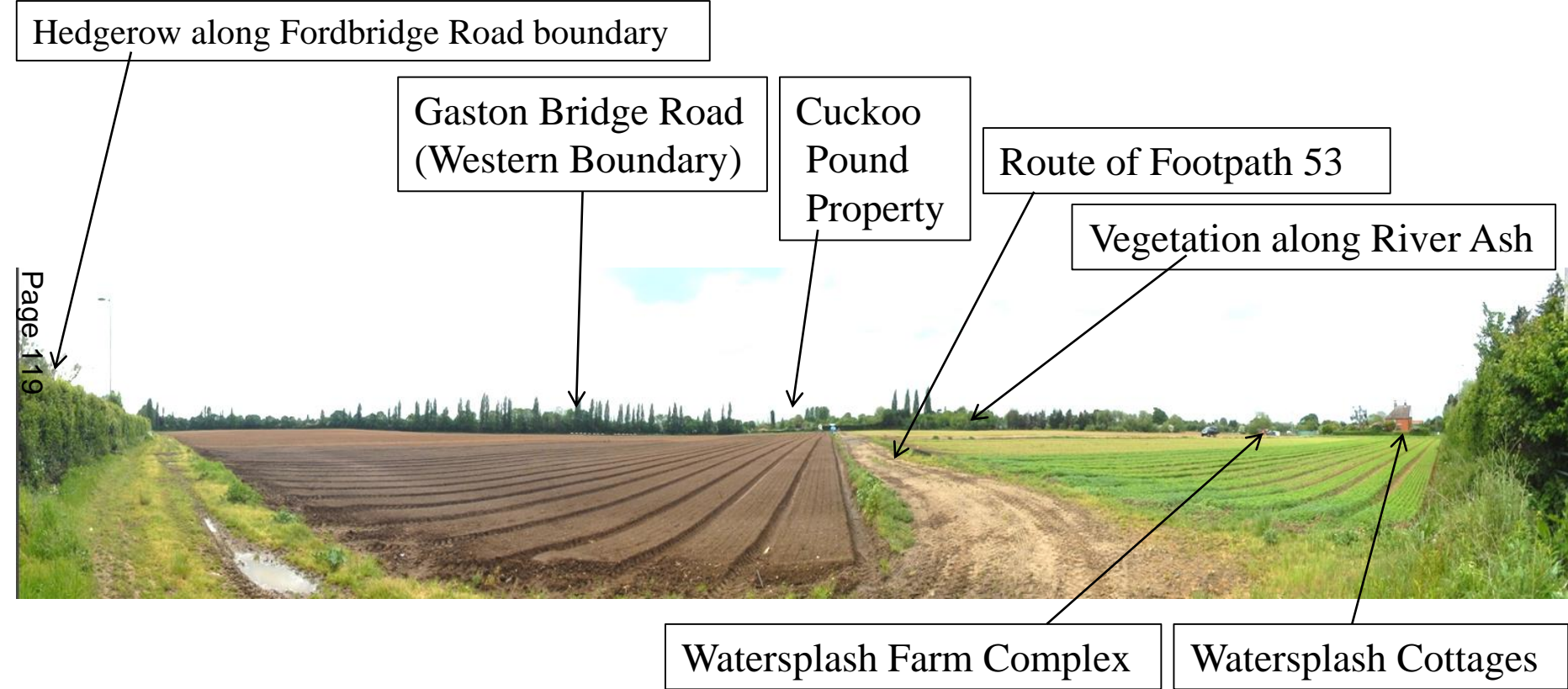


Figure 2 : Panoramic view from Footpath 53 (Gaston Bridge Road end) of the application site west of the River Ash

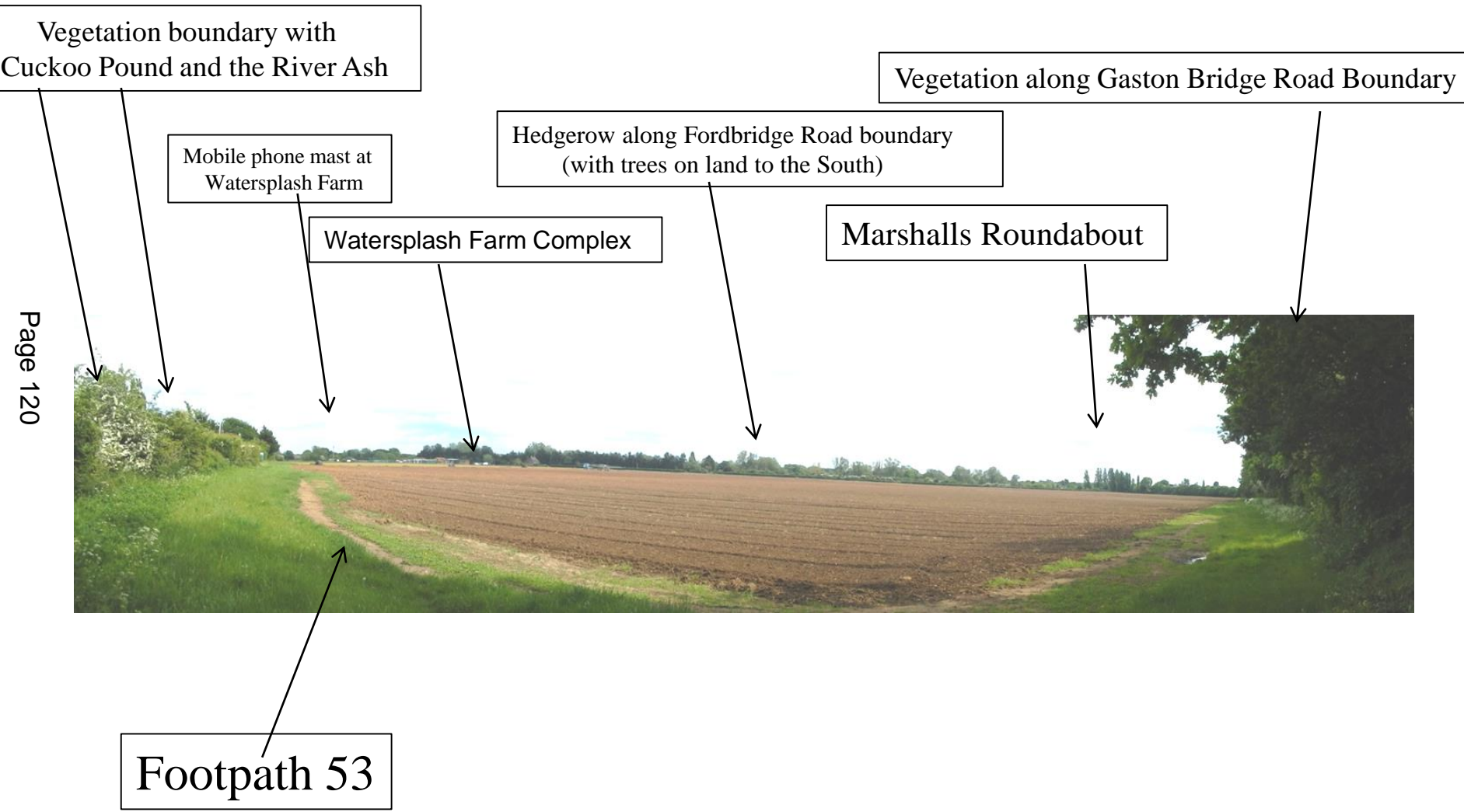


Figure 3: Panoramic view from the agricultural access off Fordbridge Road of the southern part of the application site east of the River Ash

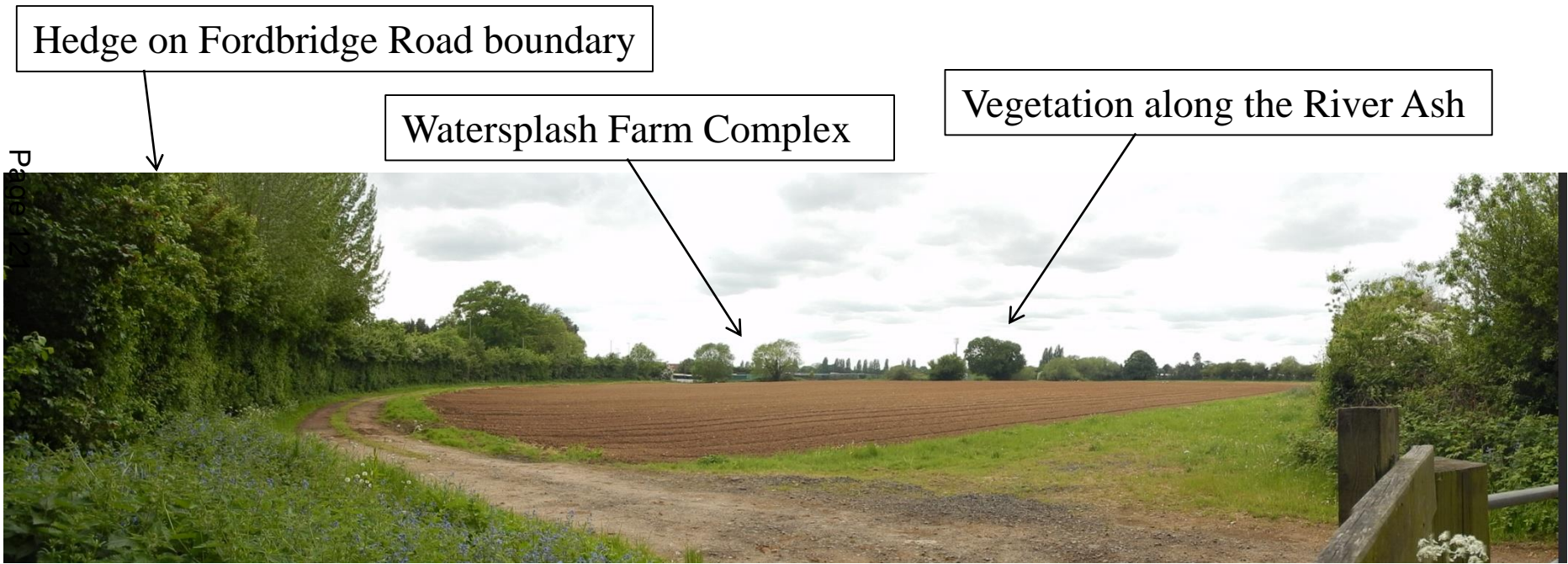
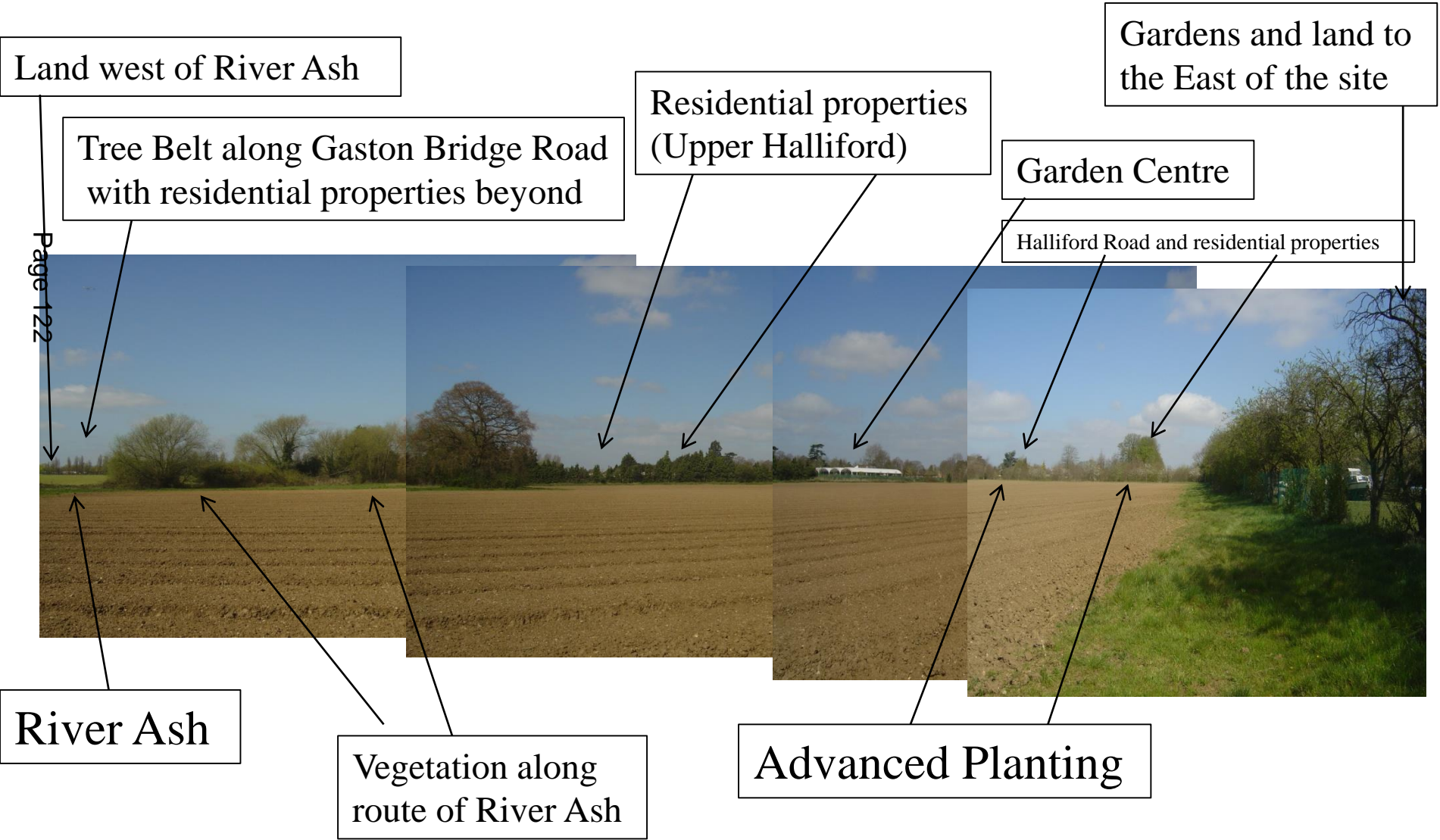
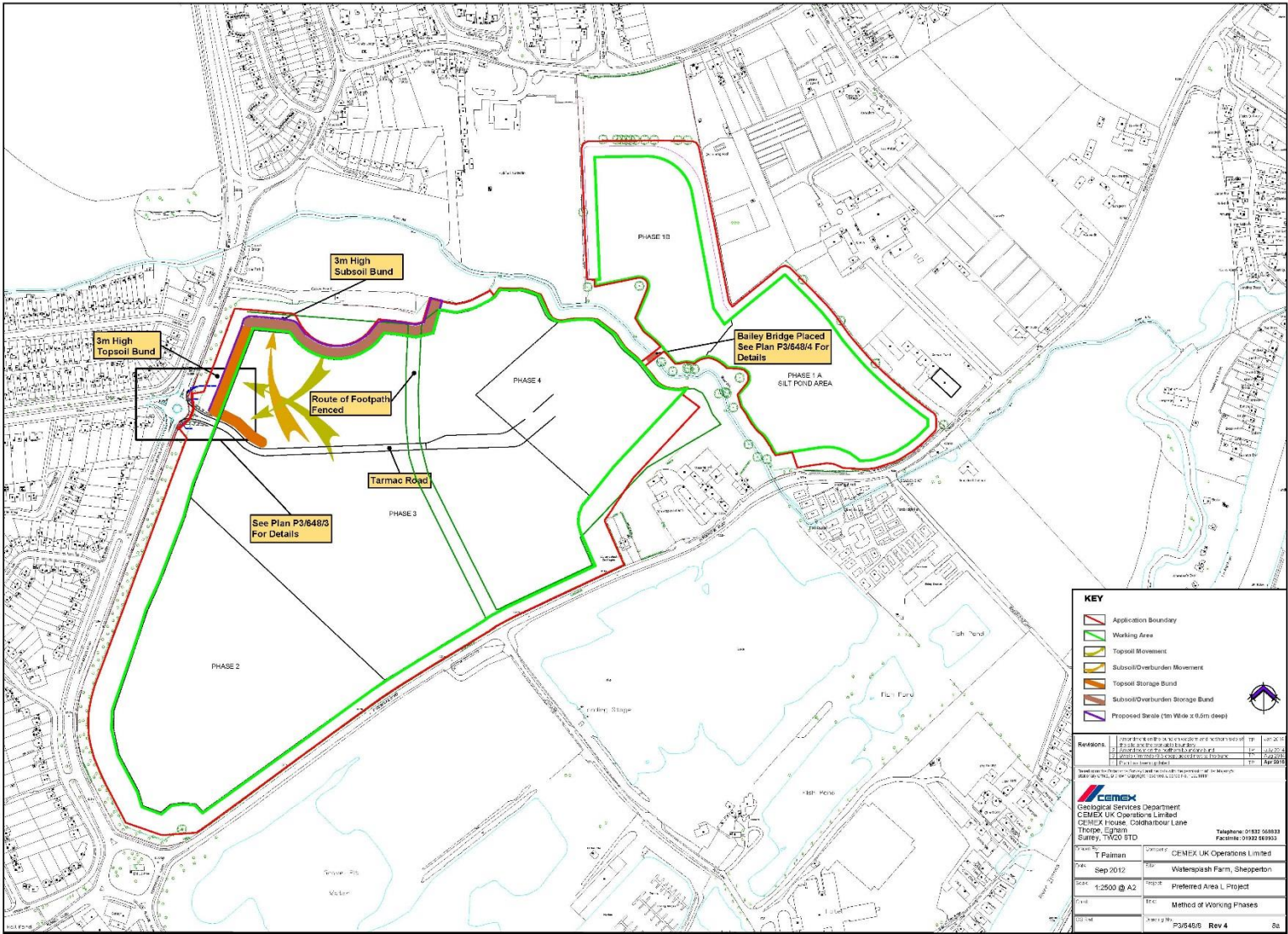


Figure 4 : Panoramic view of the northern section of the land east of the River Ash



Plan 2 showing method of working phases

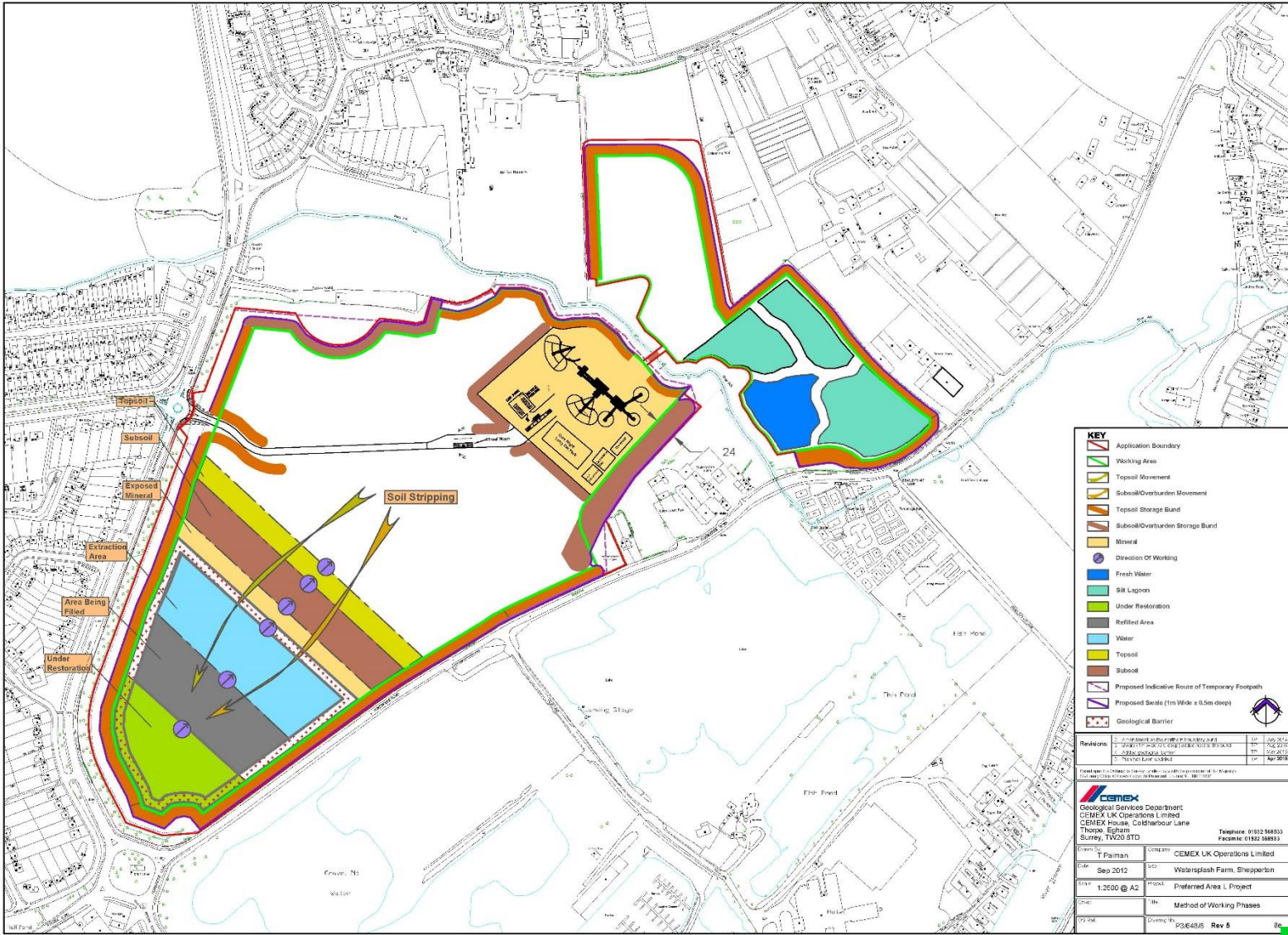
Page 123





Plan 4 showing method of working phases

Page 125



KEY

- Application Boundary
- Working Area
- Topsoil Movement
- Subsoil/Overburden Movement
- Topsoil Storage Bund
- Subsoil/Overburden Storage Bund
- Mineral
- Direction Of Working
- Fresh Water
- Silt Lagoon
- Under Restoration
- Refilled Area
- Water
- Topsoil
- Subsoil
- Proposed Indicative Route of Temporary Footpath
- Proposed Seals (1m Wide x 0.5m deep)
- Geological Barrier

Revisions

Rev	Description	Date
1	Issue for comment	14/09/2012
2	Issue for comment	14/09/2012
3	Issue for comment	14/09/2012
4	Issue for comment	14/09/2012
5	Issue for comment	14/09/2012
6	Issue for comment	14/09/2012
7	Issue for comment	14/09/2012
8	Issue for comment	14/09/2012
9	Issue for comment	14/09/2012
10	Issue for comment	14/09/2012
11	Issue for comment	14/09/2012
12	Issue for comment	14/09/2012
13	Issue for comment	14/09/2012
14	Issue for comment	14/09/2012
15	Issue for comment	14/09/2012
16	Issue for comment	14/09/2012
17	Issue for comment	14/09/2012
18	Issue for comment	14/09/2012
19	Issue for comment	14/09/2012
20	Issue for comment	14/09/2012
21	Issue for comment	14/09/2012
22	Issue for comment	14/09/2012
23	Issue for comment	14/09/2012
24	Issue for comment	14/09/2012
25	Issue for comment	14/09/2012
26	Issue for comment	14/09/2012
27	Issue for comment	14/09/2012
28	Issue for comment	14/09/2012
29	Issue for comment	14/09/2012
30	Issue for comment	14/09/2012
31	Issue for comment	14/09/2012
32	Issue for comment	14/09/2012
33	Issue for comment	14/09/2012
34	Issue for comment	14/09/2012
35	Issue for comment	14/09/2012
36	Issue for comment	14/09/2012
37	Issue for comment	14/09/2012
38	Issue for comment	14/09/2012
39	Issue for comment	14/09/2012
40	Issue for comment	14/09/2012
41	Issue for comment	14/09/2012
42	Issue for comment	14/09/2012
43	Issue for comment	14/09/2012
44	Issue for comment	14/09/2012
45	Issue for comment	14/09/2012
46	Issue for comment	14/09/2012
47	Issue for comment	14/09/2012
48	Issue for comment	14/09/2012
49	Issue for comment	14/09/2012
50	Issue for comment	14/09/2012
51	Issue for comment	14/09/2012
52	Issue for comment	14/09/2012
53	Issue for comment	14/09/2012
54	Issue for comment	14/09/2012
55	Issue for comment	14/09/2012
56	Issue for comment	14/09/2012
57	Issue for comment	14/09/2012
58	Issue for comment	14/09/2012
59	Issue for comment	14/09/2012
60	Issue for comment	14/09/2012
61	Issue for comment	14/09/2012
62	Issue for comment	14/09/2012
63	Issue for comment	14/09/2012
64	Issue for comment	14/09/2012
65	Issue for comment	14/09/2012
66	Issue for comment	14/09/2012
67	Issue for comment	14/09/2012
68	Issue for comment	14/09/2012
69	Issue for comment	14/09/2012
70	Issue for comment	14/09/2012
71	Issue for comment	14/09/2012
72	Issue for comment	14/09/2012
73	Issue for comment	14/09/2012
74	Issue for comment	14/09/2012
75	Issue for comment	14/09/2012
76	Issue for comment	14/09/2012
77	Issue for comment	14/09/2012
78	Issue for comment	14/09/2012
79	Issue for comment	14/09/2012
80	Issue for comment	14/09/2012
81	Issue for comment	14/09/2012
82	Issue for comment	14/09/2012
83	Issue for comment	14/09/2012
84	Issue for comment	14/09/2012
85	Issue for comment	14/09/2012
86	Issue for comment	14/09/2012
87	Issue for comment	14/09/2012
88	Issue for comment	14/09/2012
89	Issue for comment	14/09/2012
90	Issue for comment	14/09/2012
91	Issue for comment	14/09/2012
92	Issue for comment	14/09/2012
93	Issue for comment	14/09/2012
94	Issue for comment	14/09/2012
95	Issue for comment	14/09/2012
96	Issue for comment	14/09/2012
97	Issue for comment	14/09/2012
98	Issue for comment	14/09/2012
99	Issue for comment	14/09/2012
100	Issue for comment	14/09/2012

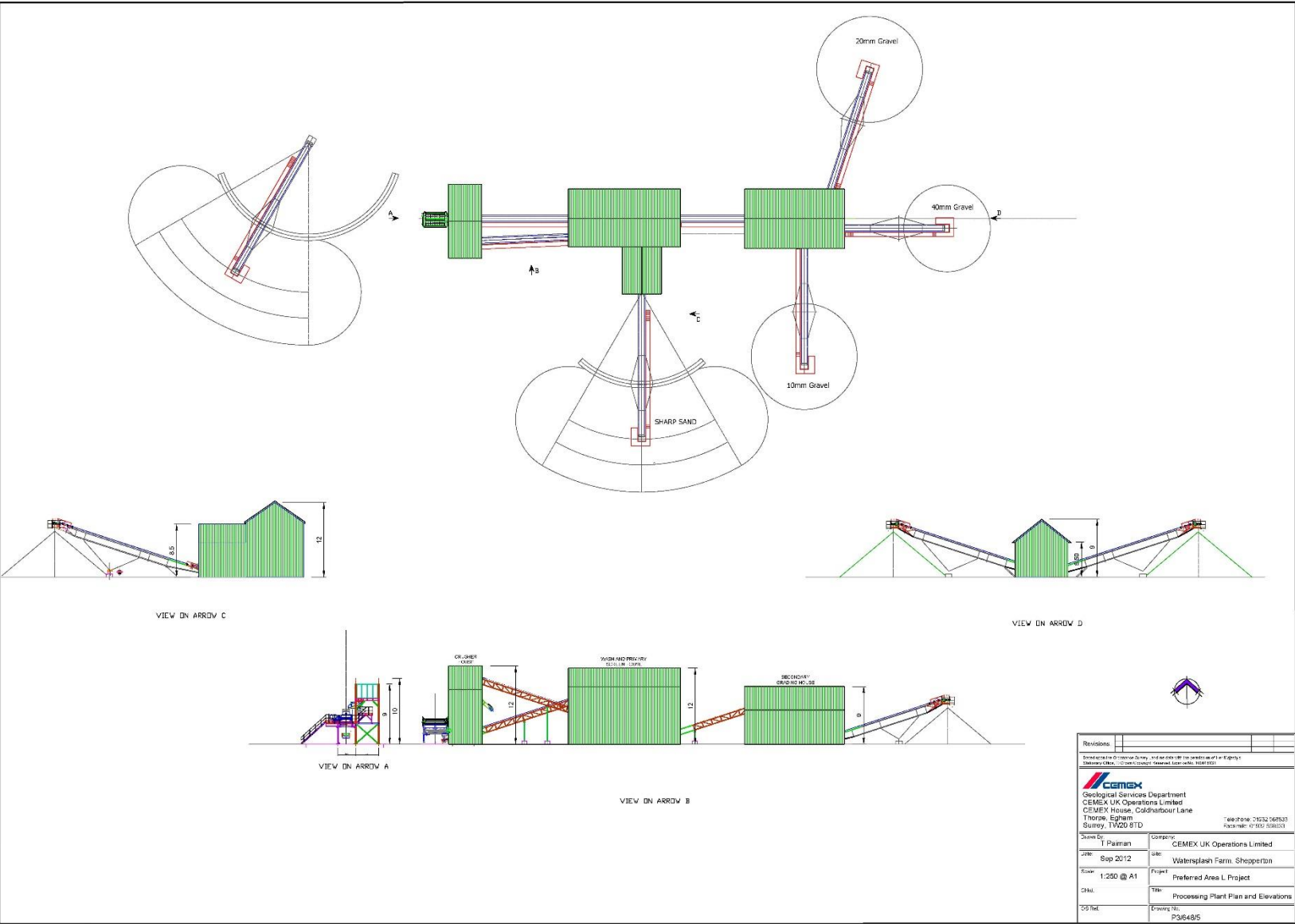
CEMEX
Geological Services Department
CEMEX UK Operations Limited
CEMEX House, Caldbourne Lane
Thorpe, Egham, Surrey, TW20 8TD
Telephone: 01883 568833
Facsimile: 01883 568833

Drawn by: T. Paiman
Checked by: CEMEX UK Operations Limited
Date: Sep 2012
Scale: 1:2500 @ A2
Project: Watersplash Farm, Shepperton
Sheet: Preferred Area 1, Project
Method of Working Phases
Rev 5



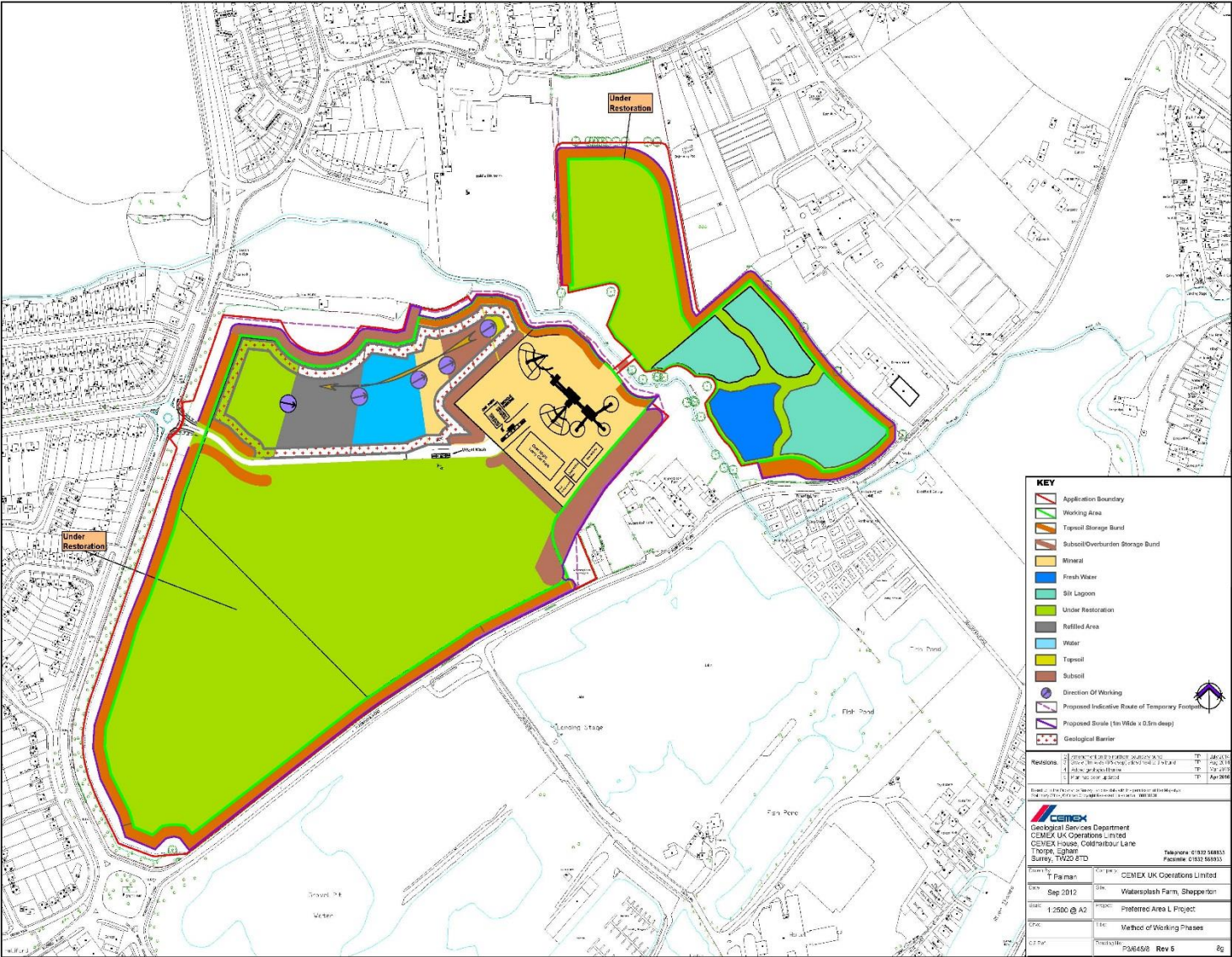
Plan 5 showing Processing plant and Elevations

Page 126





Plan 6 showing method of working phases



Page 128

