

## Health and Wellbeing Board Paper

### 1. Reference information

Paper tracking information	
<b>Title:</b>	Surrey Local Outbreak Engagement Board - Update
<b>Related Health and Wellbeing Priority:</b>	N/A LOEB – sub-committee of the Health and Wellbeing Board
<b>Author:</b>	Amelia Christopher, Committee Manager (SCC)
<b>Sponsor:</b>	Mrs Sinead Mooney, Cabinet Member for Adults and Health - LOEB Chairman (SCC) Ruth Hutchinson, Director of Public Health (SCC)
<b>Paper date:</b>	3 December 2020
<b>Related papers</b>	N/A

### 2. Executive summary

The report provides a quarterly update on the Surrey Local Outbreak Engagement Board.

The NHS Test and Trace Service, launched on 28 May 2020, is designed to control the rate of reproduction of Covid-19 by reducing the spread of the infection. This is a national programme, but each Upper Tier local authority are expected to develop a Local Outbreak Control plan by 30 June 2020. Local Outbreak Control Plans are designed to clarify how local government works with the national Test and Trace service, so that the whole local system works to contain the virus.

As part of their local arrangements councils are expected to have a member-led, typically by the Leader of the authority, COVID-19 Local Outbreak Engagement Board. These arrangements are expected to provide political oversight of local delivery of the Test and Trace Service, will lead the engagement with local communities and be the public face of the local response in the event of an outbreak.

The Surrey Local Outbreak Engagement Board (LOEB) was formally constituted by County Council on 7 July 2020 as a formal sub-committee of the Surrey Health and Wellbeing Board. The newly formed Surrey COVID-19 Health Protection Operational Group (HPOG) is responsible for the operational development and delivery of the Local Outbreak Control Plan and will report to the Local Outbreak Engagement Board.

### 3. Recommendations

The Board is asked to note the update on the Surrey Local Outbreak Engagement Board for this quarter in which the Board met on **16 July 2020** and **25 September 2020**.

### 4. Reason for Recommendations

The Health and Wellbeing Board has oversight over the Local Outbreak Engagement Board as it was formally constituted as a sub-committee by County Council which approved the terms of reference on 7 July 2020.

The agendas, minutes and meeting information can be found by accessing the following link:

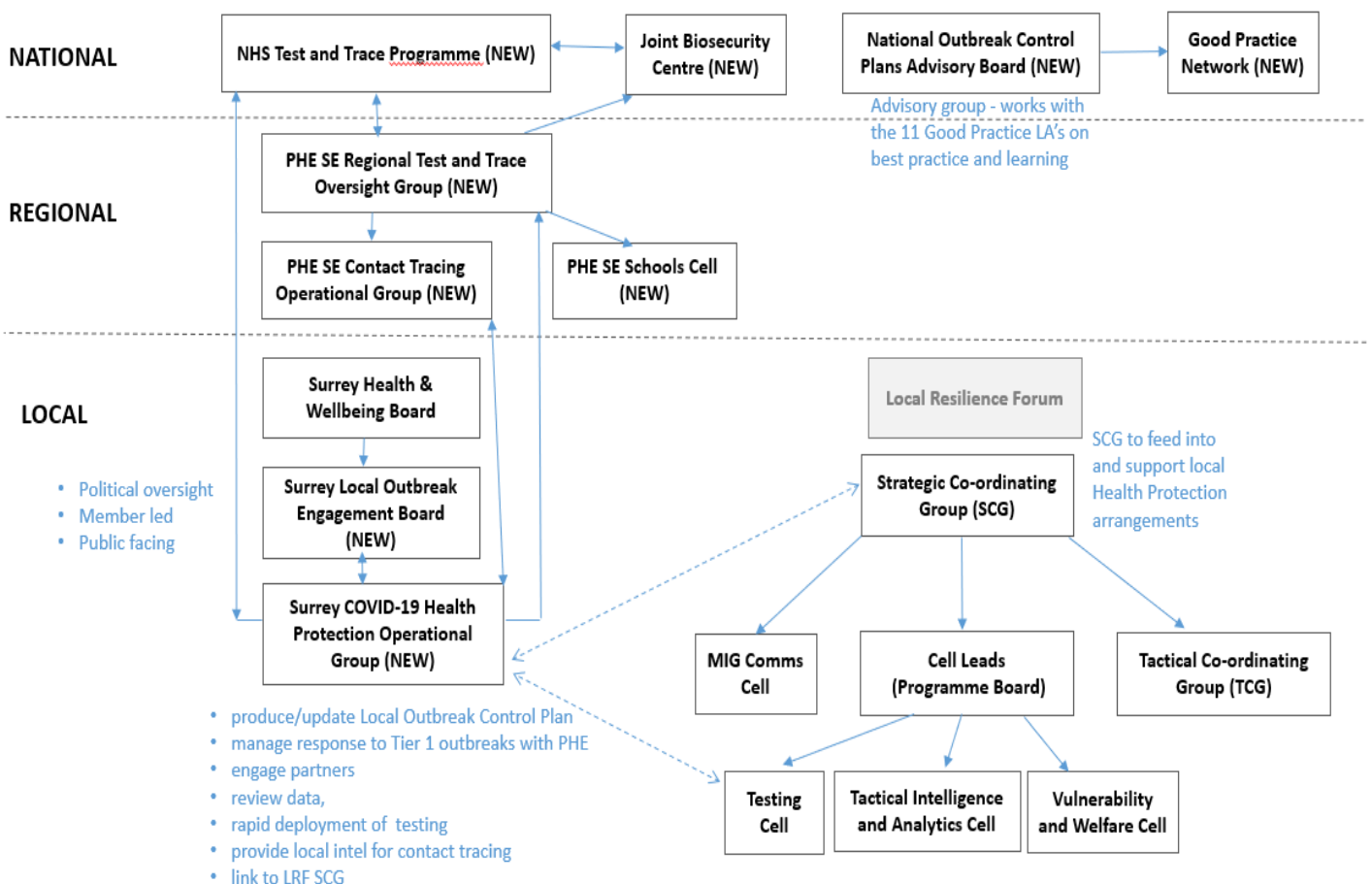
<https://mycouncil.surreycc.gov.uk/ieListMeetings.aspx?CId=820&Year=0>

### 5. Detail

#### Governance Overview

The Governance Overview below shows how the Health and Wellbeing Board; and Surrey Local Outbreak Engagement Board sits within the national, regional and local levels.

#### COVID-19 Test and Trace – Governance Overview



In line with section 3 of the Surrey Local Outbreak Board's Terms of Reference, please see the LOEB's Role and Responsibilities below:

- Sign-off of the general direction of travel for Surrey's COVID-19 Local Outbreak Control Plan and ongoing development of the plan;
- Senior level oversight of outbreak responses in Surrey, outlined in Surrey's COVID-19 Local Outbreak Control Plan and implemented primarily via the local COVID-19 Health Protection Operational Group (HPOG);
- Oversight of resource allocation relating to the delivery of Test and Trace in Surrey;
- Direction and leadership for community engagement for outbreak response;
- Approving the public-facing communications for outbreak response; and
- Approving recommendations from the Surrey COVID-19 Health Protection Operational Group.

11

**A summary of LOEB regular agenda items is presented below:**

i. National Update

As one of eleven Beacon Councils promoting best practice and good governance, the LOEB receives a national update from the Leader of the Council (SCC) who sits on the National Outbreak Control Plans Advisory Board (NOCPAB) and the Chief Executive of Surrey County Council who sits on the Good Practice Network (GPN).

Updates are provided on areas such as data sharing, learning processes, changes to local powers to enable localised lockdowns and actions put in place in relation to localised outbreaks.

ii. COVID-19 Surveillance Update

A key element of successful outbreak management is access to timely and accurate intelligence to inform health protection action. The LOEB receives a regular update on intelligence as Section 8 (Data Integration) of the Surrey Local Outbreak Control Plan describes existing intelligence resources and plans to develop further resources to support other elements of the Plan.

The Public Health Intelligence & Insight team has already achieved the following:

- Established a regular dataflow from Public Health England (PHE), governed by a signed data-sharing agreement;
- Developed Beta test and trace dashboards for the outbreak control team to review and trained staff on their use;

- Set up systems and processes for the daily review of surveillance so that the outbreak control team can take health protection action when the surveillance and other sources of intelligence indicates this is needed.

From 29 October 2020, the COVID-19 Intelligence Summary has been published twice a week, every Thursday and Monday. It provides the numbers of COVID-19 cases in Surrey broken down by borough and district as well as a comparison with national cases and information on the R number (the average number of infections (secondary) produced by a single infected person).

The latest Bi-weekly coronavirus summary for Surrey can be found using the link below:

<https://www.surreycc.gov.uk/people-and-community/emergency-planning-and-community-safety/coronavirus/alert-levels-and-local-outbreak-plan/figures-and-statistics>

There are no set numbers of cases that define an area as being at a particular level of concern.

To give advice to key partners, two main areas need to be considered beyond simple numbers:

1. Whether cases are linked to each other. Cases in a small area who have contracted COVID-19 from different sources requires a different response to cases in the same area who have contracted the virus from the same setting. There are strict definitions about what is an 'outbreak'. Local authorities work closely with Public Health England to establish if cases are linked or separate.
2. Whether the case numbers are significantly and consistently greater than expected. This involves interpretation of a daily 'exceedance report' from Public Health England, which takes into account the size of local populations, recent trends, the level of statistical confidence in fluctuations in case numbers, and the situation outside Surrey.

Surrey's Local Outbreak Control Plan has more information about the measures in place to identify and contain COVID-19 outbreaks and protect the public's health; the Plan is regularly reviewed and updated.

### iii. COVID-19 Local Outbreak Control Plan Update

Surrey's Local Outbreak Control (LOC) Plan was published on 30 June 2020. The full LOC Plan and Summary Plan are available to view on the council website:

<https://www.surreycc.gov.uk/people-and-community/emergency-planning-and-communitysafety/coronavirus/coronavirus-testing>

This is an iterative document which will be updated to reflect ongoing changes:

- To national guidance, learning from outbreaks and incidents in Surrey or other areas
- To operational processes for supporting specific settings during outbreaks

As part of this, the LOEB also receives an update on the legal context in relation to the current legislation available in terms of a localised lockdown, the Health Protection (Coronavirus, Restrictions) (Leicester) Regulations 2020 which came into effect on 4 July 2020; created as an urgent order under the Public Health (Control of Disease) Act 1984.

#### iv. Local Outbreak Control Communications Plan Update

An NHS Test and Trace Communications Plan for Surrey has been produced to support the Local Outbreak Control Plan from the 1 July as well as the Messaging Grid.

The Plan and Messaging Grid are contained within item 7 Local Outbreak Control Communication Plan Update included in the agenda of the Surrey Local Outbreak Engagement Board that met on 16 July 2020 and can be accessed using the following link:

<https://mycouncil.surreycc.gov.uk/ieListDocuments.aspx?CId=820&MId=7727&Ver=4>

The primary objective of the plan is to communicate Test and Trace advice and guidance to maximise awareness and compliance and so help contain and reduce the spread of COVID-19.

The communications plan will explain how we will:

- Amplify the national Test & Trace campaign through local channels with tailored messages for key audiences
- Provide a clear understanding of Local Outbreak Plans among key stakeholders
- Establish a rapid response process in the event of Local Outbreaks

It encompasses both online and digital tactics as well as how traditional methods will be used to ensure the widest reach across Surrey.

## **6. Next steps**

---

The Board will continue to receive a regular update on the Surrey Local Outbreak Engagement Board including its key agenda items.

The next meeting of the Surrey Local Outbreak Engagement Board will take place on 18 February 2021 and is scheduled to meet every other month in public.

This page is intentionally left blank