

A Devolution Deal for Surrey

Communities, Environment and Highways Select Committee

14 June 2022

Annex 1



SURREY
COUNTY COUNCIL

Introduction and purpose

- To understand the context behind developing a county deal (devolution deal) in relation to the levelling up white paper and the council's ambition for no one left behind.
- To consider the approach to developing a county deal for Surrey to best capitalise on the opportunities presented by the Levelling Up White Paper for the benefit of Surrey's residents
- To explore additional ideas within the parameters of the Levelling Up White Paper 'Devolution Framework', for possible inclusion in a county deal for Surrey
- To consider the engagement proposed to seek to build partnership support for, contributions and commitment to the delivery of a county deal for Surrey



Levelling up White Paper in summary

(published Feb 2022)

- 12 national 'missions' many of which are directly relevant to County, Borough, District and Parish Councils (slides 15 & 16)
- A national perspective with a clear focus on investment outside of London & South East
- Opportunity for Surrey as a whole in devolution framework
- Ambition that every part of England to have a devolution deal by 2030.
- Government has a clear preference for a directly elected individual, who will receive greater powers
- The Government allegedly wants to work with areas that can move quickly
- There is an opportunity to enrich County Deal proposals to include e.g. further health devolution
- Local Enterprise Partnership (LEP) functions to be rolled into County Deals as they are established

Inequality across Surrey

- Four areas fall within bottom 20 Per cent in national Index of Multiple Deprivation
- Some adjacent wards have a differential in life expectancy of up to 10 years
- There is a 14-year gap between the wards with the highest and lowest life expectancies for females.
- 79 Wards experience 'barriers to housing and services'
- In the worst affected areas, over 40 per cent of children are impacted by income deprivation
- Associated features include: malnourishment, housing instability, low educational attainment, and mental health disorders.
- Over 23,000 children in Surrey are living in relative poverty
- An estimated 10,600 5-to-15 year-olds have a mental health condition

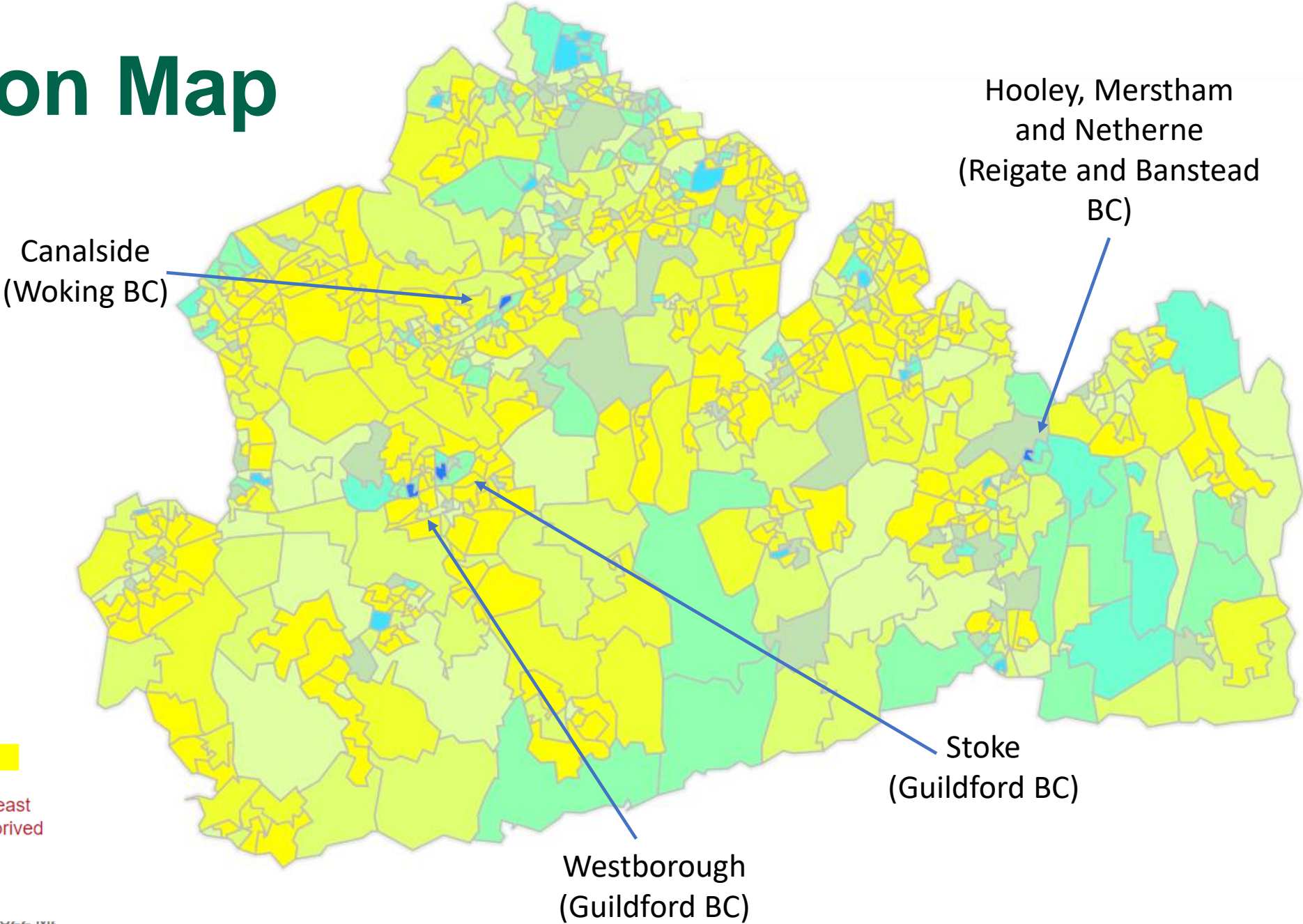
Index of Multiple Deprivation (IMD)

How LSOAs in Surrey rank in England
(out of 32,844 where rank 1 is most deprived)

Rank	LSOA name	Ward	CCG	
4800	Reigate and Banstead 008A	Hooley, Merstham & Neth..	East Surrey	■
5986	Woking 004F	Canalside	North West Surrey	■
6441	Guildford 012D	Westborough	Guildford and Waverley	■
6539	Guildford 007C	Stoke	Guildford and Waverley	■
6666	Spelthorne 001B	Stanwell North	North West Surrey	■
6862	Mole Valley 011D	Holmwoods	Surrey Downs	■
7138	Reigate and Banstead 005A	Tattenham Corner & Prest..	Surrey Downs	■
7437	Epsom and Ewell 007A	Court	Surrey Downs	■
7818	Spelthorne 002C	Ashford North and Stanw..	North West Surrey	■
7871	Woking 005B	Goldsworth Park	North West Surrey	■
7886	Runnymede 002F	Englefield Green West	Windsor, Ascot and Mai..	■
8212	Elmbridge 004B	Walton South	North West Surrey	■
8231	Reigate and Banstead 018D	Horley Central & South	East Surrey	■
9080	Waverley 002E	Farnham Upper Hale	North East Hampshire ..	■
9197	Spelthorne 001C	Stanwell North	North West Surrey	■
9226	Waverley 010A	Godalming Central and O..	Guildford and Waverley	■
9605	Runnymede 006D	Chertsey St. Ann's	North West Surrey	■
9830	Reigate and Banstead 010E	Redhill West & Wray Com..	East Surrey	■
9840	Guildford 010C	Ash Wharf	Surrey Heath	■

**This index is based on national data sets. Although they provide useful indications on parts of Surrey with the highest deprivation they do have limitations, namely granularity and timeliness of data meaning sometimes recent changes on a micro level are not captured. The IMD is just one indicator of inequality and is used alongside other data and insight to understand inequality in Surrey.*

Deprivation Map



Economic Activity



Local authority	Change Apr19/Mar20 to Jul 20/Jun21 (%)
Tandridge	13.8
Runnymede	1.8
Waverley	1.8
Surrey Heath	0.4
Elmbridge	0.3
Guildford	-0.4
Epsom and Ewell	-0.5
Woking	-0.5
Mole Valley	-5.5
Spelthorne	-6.4
Reigate and Banstead	-8.5

Level	Powers
<p>Level 1</p> <p><i>Local authorities working together across a FEA or whole county area e.g. through a joint committee</i></p>	<ul style="list-style-type: none"> - Strategic role in delivering services - Host for Government functions best delivered at a strategic level involving more than one local authority e.g. Local Nature Recovery Strategies - Opportunity to pool services at a strategic level - Opportunity to adopt innovative local proposals to deliver action on climate change and the UK's Net Zero targets
<p>Level 2</p> <p><i>A single institution or County Council without a directly elected leader/DEM, across an FEA or whole county area</i></p>	<p>Above, plus:</p> <ul style="list-style-type: none"> - Supporting local business with LEP functions - Some local control of sustainable transport. - UKSPF planning and delivery at strategic level - Devolution of Adult Education functions and the core Adult Education Budget & Providing input into Local Skills Improvement Plans - Homes England compulsory purchase powers - <u>Clear</u> defined role in local resilience
<p>Level 3</p> <p><i>A single institution or County Council with a directly elected leader/DEM, across a FEA or whole county area</i></p>	<p>Above, plus:</p> <ul style="list-style-type: none"> - New rail partnerships with Great British Railways - Consolidation of existing core local transport funding - Long-term investment fund and brownfield fund - Role in designing and delivering future contracted employment programmes. - Ability to establish Mayoral Development Corporations - Strategic partnerships with Homes England - Mayoral control of PCC functions where boundaries align - Ability to introduce mayoral precept on council tax - Ability to introduce supplement on business rates

Devolution Framework

It is proposed that a County Deal for Surrey is developed in line with Level 1 and Level 2 powers, setting out the rationale for the proposals, how the powers will be used, what will be achieved and it will be measured.

This will be supplemented with additional innovative proposals that are not Level 3 (and therefore do not require a Directly Elected individual).

This will be done in partnership and with regard to the 'early nine' County Deals: Cornwall; Derbyshire and Derby; Devon, Plymouth and Torbay; Durham; Hull and East Yorkshire; Leicestershire; Norfolk; Nottinghamshire and Nottingham and Suffolk

- Acronyms:**
- FEA – Functional Economic Area
 - DEM – Directly Elected Mayor
 - LEP – Local Enterprise Partnership
 - UKSPF – United Kingdom Shared Prosperity Fund
 - PCC – Police and Crime Commissioner

A County Deal for Surrey

- We are well placed to respond to the opportunities in the Levelling up White Paper, building on our work to date (e.g. research and analysis, partnership arrangements, capacity and competency to deliver, etc.)
- A county deal for Surrey will reflect the levelling up missions in the white paper but be placed firmly within a Surrey context, focused on no one left behind.
- We will work up a draft County Deal proposal, engaging with partners, to negotiate with Government when we are able to (potentially from late Summer/early Autumn).

Suggested initial areas of focus for County Deal proposals

Streamlining business support: opportunities to be more ambitious (e.g. LEP functions)

Local economic clusters based on Surrey's unique strengths & SCC convening power

Surrey-wide offer for Education & Skills: e.g. taking on Adult Education Budget; apprenticeship levy, careers service.

Innovative proposals to reach net zero e.g. Lead Climate Authority, sustainable transport powers.

Strategic role for tackling health inequality e.g. housing

Piloting new approaches to empower communities e.g. Community Improvement Districts and community covenants

The benefits of a County Deal for Surrey

It is hoped that a devolution deal would bring a range of benefits to Surrey, including but not limited to:

- Greater autonomy and agility for local people and leaders to make the right decisions for the county at the right level, based on local knowledge, partnerships, and residents' priorities.
- The tools and freedoms required to meet our ambitious climate targets and ensure that Surrey is a sustainable place to live for years to come.
- Unleash greater economic opportunity for residents and ensure that our towns and high streets are equipped to be excellent places to live, work, and do business.
- A better aligned and strategically coordinated funding and investment landscape to make it as easy as possible to conduct business in Surrey.
- The local powers and tools to reduce the gap in healthy life expectancy that exists in the county.
- A cohesive and consistent understanding and response to skills and training needs across the county to ensure that Surrey's young people have the best start in life and help people become equipped for the changing needs of the workplace throughout their careers.
- Facilitate conditions for 'double devolution' to empower local partners and communities at the most effective level to deliver improvements in quality of life, resourcefulness, and social value.

What this would mean for residents

Interpreting the ranks: the higher the rank the better, there are 193 wards in Surrey

Looking at Old Dean as an example

Health and Wellbeing

Old Dean ranked 99th in Surrey for Air Quality

A County Deal for Surrey could allow for consistent EV infrastructure planning and private hire car regulations to help reduce emissions

Business and Economy

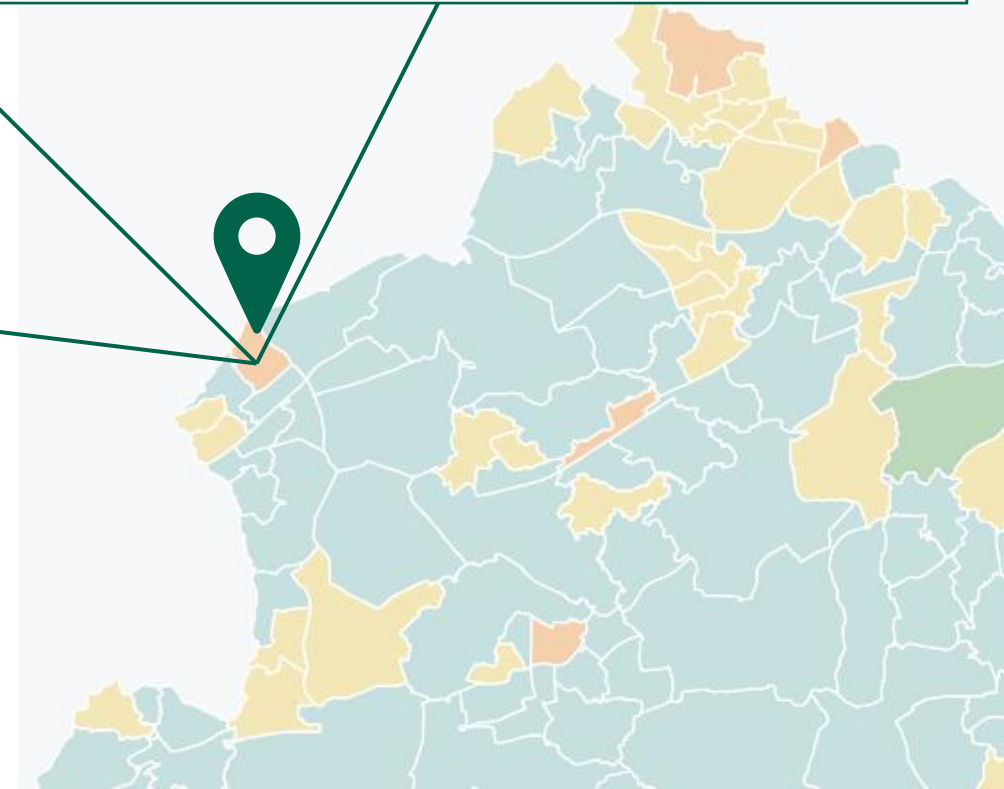
Old Dean is ranked 182nd in Surrey for the size and growth of its economy

A County Deal could allow Surrey County Council to act as a single-point of contact for local businesses to access new investment opportunities

Skills and Qualifications

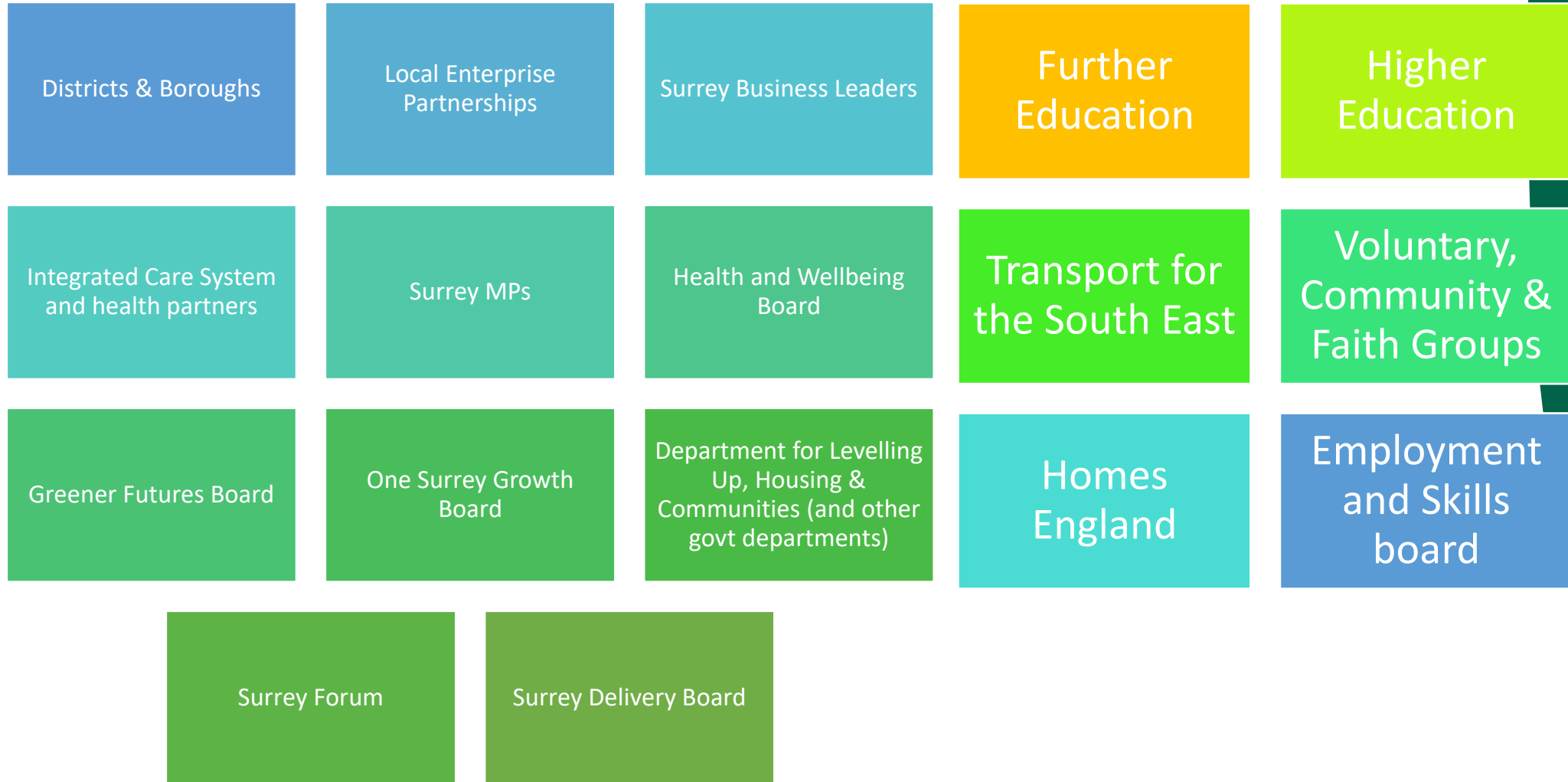
25.4 per cent of adults in Old Dean do not have any qualifications

A County Deal for Surrey could allow us to better target skills funding to areas and work with local businesses in Surrey to develop career pathways



**These changes will not happen overnight and are dependent on our negotiations with government which will ultimately shape the scope of the final County Deal in Surrey. However this slide provides an indication of the areas where we will be able to have an impact on those residents in Surrey at the greatest risk of being left behind.*

Key Partners to Engage



Potential indicative timeline for County Deal preparation

Page 31



Discussion

1. Does the Select Committee have any comments on the approach being taken to the development of a County Deal for Surrey?
2. Having regard to Level 1 and 2 devolved powers, does the Select Committee have evidence to support the inclusion of additional specific proposals?
3. Can the Select Committee suggest ways in which the County Deal for Surrey can be communicated and socialised more widely?

The 12 missions of Levelling Up (1 of 2)

Focus Area	Mission
1. Living Standards	Rising pay, employment and productivity, a globally competitive city in each area of the UK, closing gap between top performing and other areas closing
2. Research & Development	By 2030, domestic public investment in Research & Development (R&D) outside the Greater South East will increase by at least 40 per cent, and over the Spending Review period by at least one third. This additional government funding will seek to leverage at least twice as much private sector investment over the long term to stimulate innovation and productivity growth.
3. Transport Infrastructure	By 2030, local public transport connectivity across the country will be significantly closer to the standards of London, with improved services, simpler fares and integrated ticketing.
4. Digital Connectivity	By 2030, the UK will have nationwide gigabit-capable broadband and 4G coverage, with 5G coverage for the majority of the population
5. Education	By 2030, the number of primary school children achieving the expected standard in reading, writing and maths will have significantly increased. In England, this will mean 90 per cent of children will achieve the expected standard, and the percentage of children meeting the expected standard in the worst performing areas will have increased by over a third.
6. Skills	By 2030, the number of people successfully completing high-quality skills training will have significantly increased in every area of the UK. In England, this will lead to 200,000 more people successfully completing high quality-skills training annually, driven by 80,000 more people completing courses in the lowest skilled areas.

The 12 missions of Levelling Up (2 of 2)

Focus Area	Mission
7. Health	By 2030, the gap in Healthy Life Expectancy (HLE) between local areas where it is highest and lowest will have narrowed, and by 2035 HLE will rise by five years.
8. Wellbeing	By 2030, wellbeing will have improved in every area of the UK, with the gap between top performing and other areas closing.
9. Pride in Place	By 2030, pride in place, such as people's satisfaction with their town centre and engagement in local culture and community, will have risen in every area of the UK, with the gap between top performing and other areas closing.
10. Housing	By 2030, renters will have a secure path to ownership with the number of first-time buyers increasing in all areas; and the government's ambition is for the number of non-decent rented homes to have fallen by 50 per cent, with the biggest improvements in the lowest performing areas.
11. Crime	By 2030, homicide, serious violence and neighbourhood crime will have fallen, focused on the worst affected areas.
12. Local Leadership	By 2030, every part of England that wants one will have a devolution deal with powers at or approaching the highest level of devolution and a simplified, long-term funding settlement.