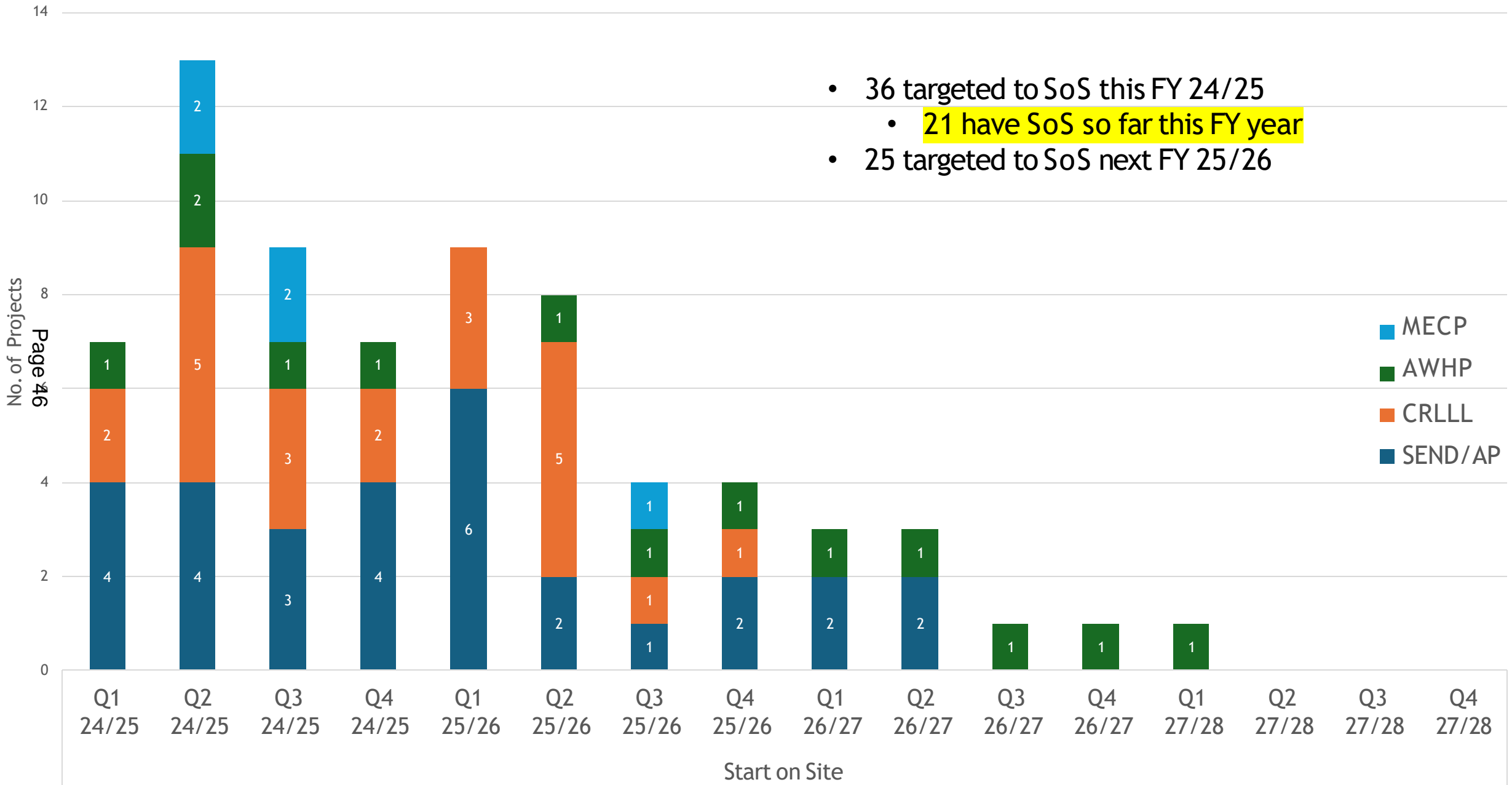


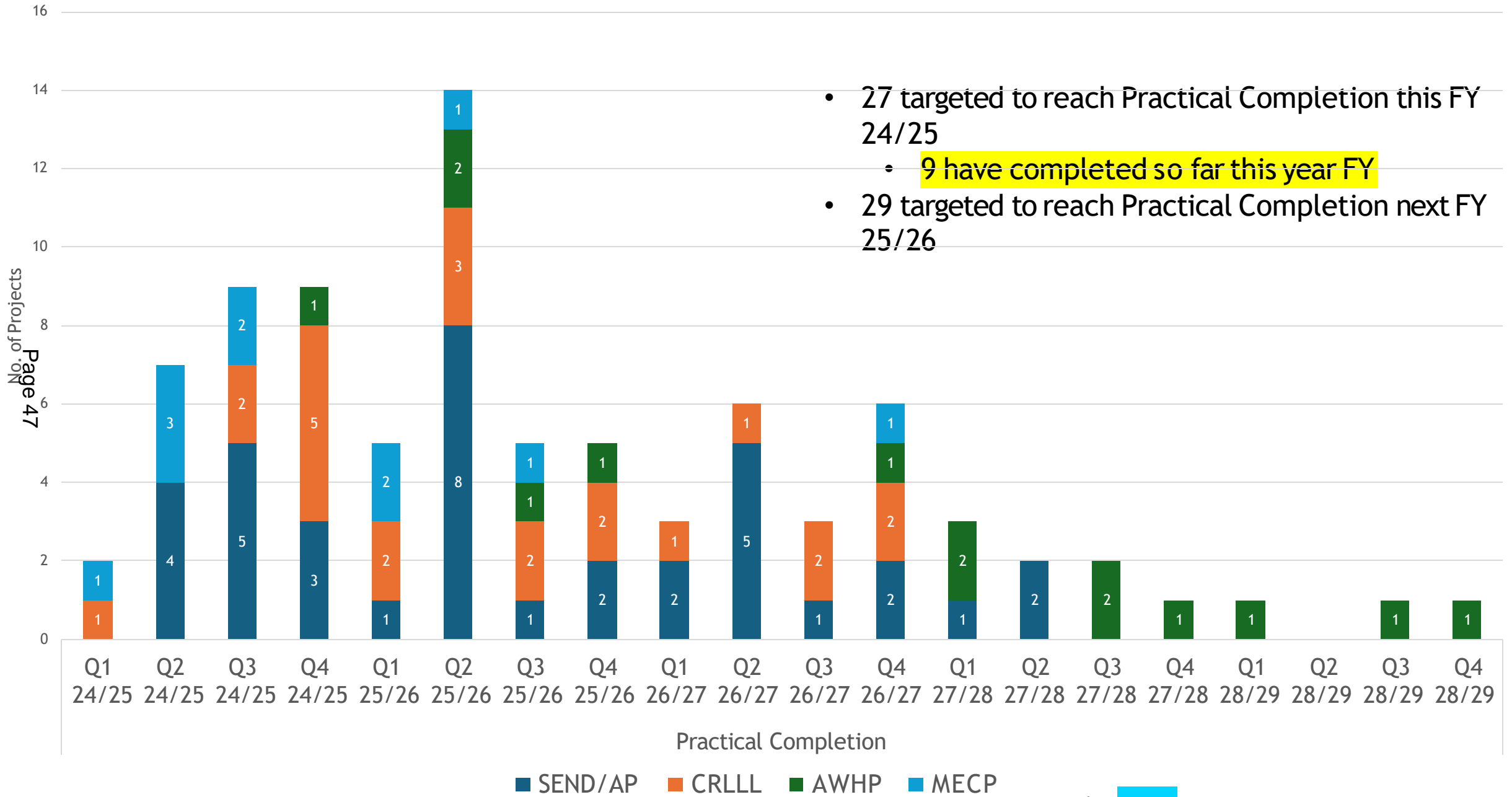
**Cabinet Member for Property, Waste and Infrastructure
Capital Projects Update October 2024**

Capital Projects Start on Site (Oct 24 Data)



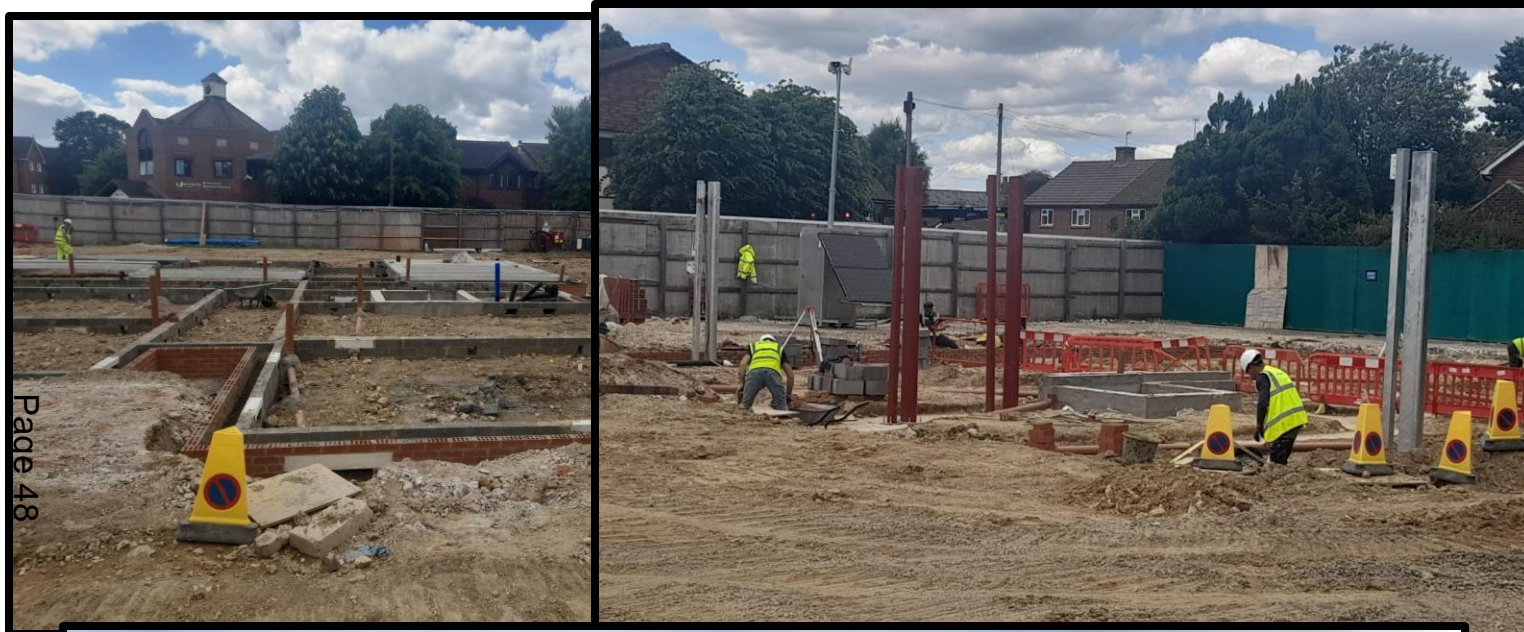
- 36 targeted to SoS this FY 24/25
 - 21 have SoS so far this FY year
- 25 targeted to SoS next FY 25/26

Capital Projects Practical Completions (Oct 24 Data)



- 27 targeted to reach Practical Completion this FY 24/25
 - 9 have completed so far this year FY
- 29 targeted to reach Practical Completion next FY 25/26

Right Homes, Right Support AWP Key Achievements Highlights



Page 48



Supported Independent Living Former Horley Library Reigate s Banstead Borough

Contractor : Neilcott Construction limited

Start on Site: May 2024

Target Practical Completion: July 2025

Purpose: The scheme is designed to allow working adults with a learning disability and/or autism to maintain and/or develop their independence and be part of the community. The scheme includes 2 x 5 bed town houses and 6 x 1-bedroom flats as part of Surrey County Council's "Right Homes, Right Support" strategy.

Cost £8.24m

Right Homes, Right Support AWP Key Achievements Highlights



Short Breaks Lakers Woking Borough

Contractor : Neilcott Construction Limited

Start on Site: Feb 2024

Target Practical Completion: Feb 2025

Purpose: High quality Short Breaks accommodation for working age adults with learning disabilities and/or autism. The scheme includes 8 ensuite bedrooms and communal facilities as part of Surrey County Council's "Right Homes, Right Support" strategy.

Cost £5.77m

Right Homes, Right Support AWP Key Achievements Highlights



Page 50

Supported Independent Living Former Manor School Woking Borough

Contractor : Neilcott Construction Limited

Start on Site: August 2024

Target Practical Completion: Sept 2025

Purpose: Supported Independent Living accommodation in the form of two 5-bedroom townhouses and six 1-bedroom flats. The development will provide homes for sixteen working-age adults with learning disabilities and/or autism, as part of Surrey County Council's "Right Homes, Right Support" strategy.

Cost £8.5m

Right Homes, Right Support AWHP Key Achievements Highlights



Extra Care Housing Colebrook Reigate s Banstead Borough

Contractor : Goody Demolition.
Main Contractor TBA

Target Start on Site: Under DBFO, Main Contractor on Jan 2027.

Target Practical Completion: Demolitions to complete Oct 2024.
Main construction proposed completion with DBFO Oct 2028.

Purpose: Colebrook Day Centre for independent living for adults with a spectrum of care needs. Outline planning consent for indicatively 120 units scheduled for October 24 Planning Committee. This is part of Surrey County Council's "Right Homes, Right Support" strategy. Cost £3.1m

Right Homes, Right Support AWP Key Achievements Highlights

Extra Care Housing Birchlands Runnymede Borough

Contractor : Goody Demolition.
Main Contractor TBA

Target Start on Site: Main contractor proposed start on Site under DBFO Oct 2026.

Target Practical Completion: Demolitions completed. Main construction proposed completion with DBFO April 2028.

Purpose: Outline planning consent indicatively proposed 48 extra care apartments (45 x 1 bed, 3 x 2 bed) independent living for adults with a spectrum of care needs as part of Surrey County Council’s “Right Homes, Right Support” strategy.

Cost £3.1m



Right Homes, Right Support AWP Key Achievements Highlights



Extra Care Housing Orchard Court Tandridge District

Contractor : Goody Demolition.
Main Contractor TBA

Target Start on Site: Main Contractor proposed Start on Site with DBFO arrangement April 2027

Target Practical Completion: Demolition completed; Main construction proposed completion with DBFO Oct 2028.

Purpose: Independent living for adults with a spectrum of care needs. Outline planning achieved. This is part of Surrey County Council's "Right Homes, Right Support" strategy.

Cost £3.1m

Mainstream Schools Key Achievements Highlights



Page 54



Mainstream Education Woolmer Hill Secondary School Waverley Borough

Contractor : OCD Construction Ltd

Completed: September 2024 - currently in defects liability for 12 months.

Purpose: The Secondary school took on 900 additional pupils for Sept 2023 and therefore required additional supporting and teaching spaces. A new teaching block, Drama Studio C lift, food pod C replacement hard play area.

Cost: £7.5m

Mainstream Schools Key Achievements Highlights



Mainstream Education Bishop Wand Secondary School Spelthorne Borough

Contractor : MCS Construction

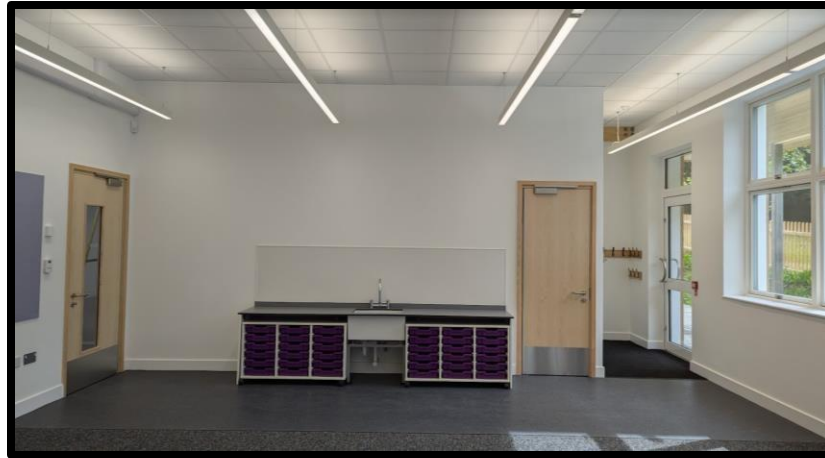
Completed: April 2024 currently in defects liability.

Purpose: New Dining, Classrooms and Science wing teaching block for 1 form extension. Highway works still to be completed.

Cost: £5.5m



Mainstream Schools Key Achievements Highlights



**Mainstream Education
St Peter s St Paul
Primary School
Tandridge District**

Contractor: EW Beard
Construction

Completed: Sept 2024
currently in defects liability.

Purpose: New Teaching Block
for 120 new Places expansion
to the existing school.

Cost: £4.5m

Page 16



Corporate Parenting Key Achievements Highlights



Corporate Parenting Children's Homes Walton s Epsom Shaw Family Contact Centre

Contractor : EW Beard Construction

Completed:

Epsom April 2023

Walton May 2023

Shaw Family Contact Centre August 2023

Defects liability completed 2024.

Purpose: The new purpose-built homes C contact centre can accommodate up to ten children and young people between them at any one time, with rooms for overnight staff too.

Cost £5.5m rebuilding 2 Community Children's Homes C £1.8m Shaw Family Contact Centre.



Corporate Parenting Key Achievements Highlights



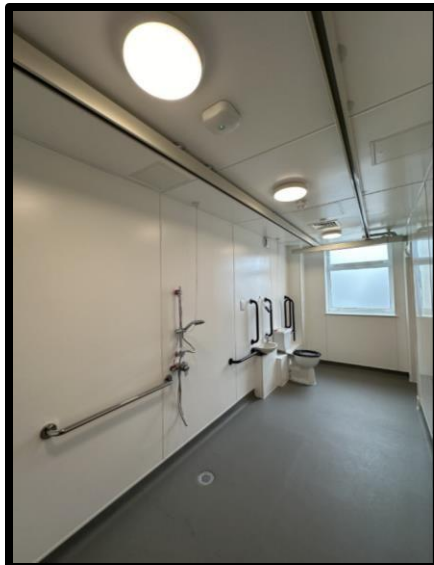
Corporate Parenting Applewood Respite Centre Epsom and Ewell Borough

Contractor: EW Beard Construction

Completed: July 2024 currently in defects liability

Purpose: Short Breaks respite care home for children with disabilities and Learning difficulties. Refurbishment, upgrade and new side extension for larger kitchen facilities.

Cost: £1.6m



Corporate Parenting Key Achievements Highlights



Corporate Parenting Dorking Children's Home Mole Valley District

Contractor: Stepnell Limited

Commenced: September 2023

Proposed completion: October 2024

Purpose: New construction of a 6-bedroom children's home with a 3-bedroom annex to support specialist needs for children with Autism

Cost: £4.2m



Page 59

Corporate Parenting Key Achievements Highlights



Page 60



Corporate Parenting Faircroft Children's Home Elmbridge Borough

Contractor: Stepnell Limited

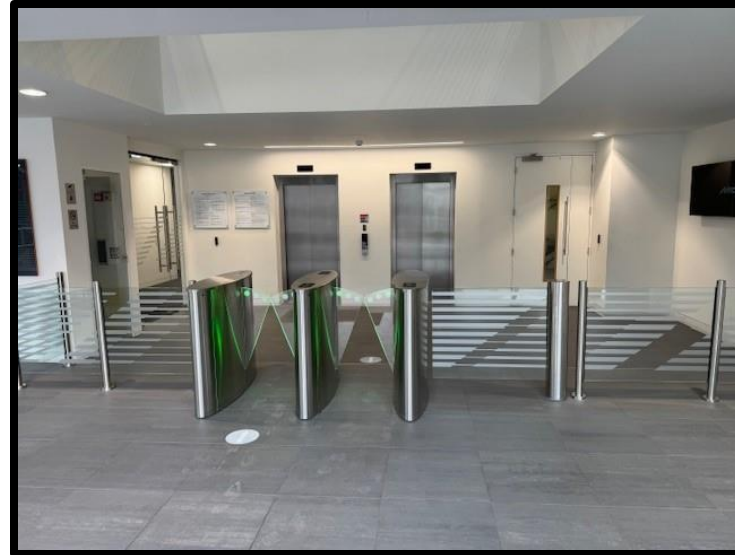
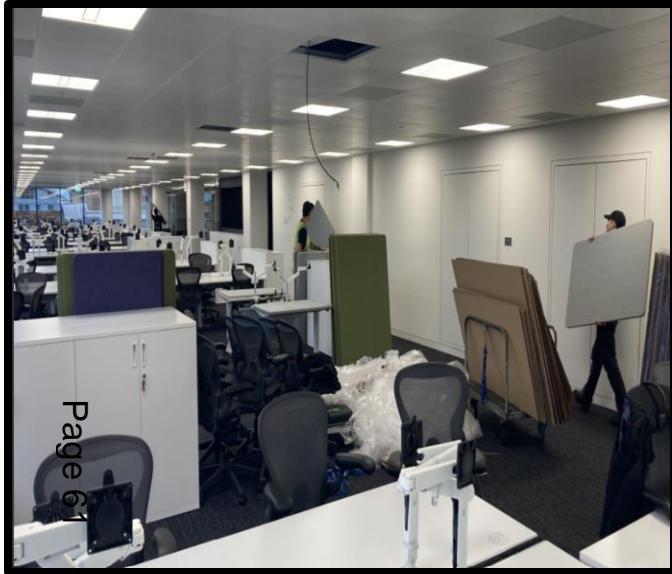
Commenced: July 2024

Proposed completion: May 2025

Purpose: New construction of a 6-bedroom children's home with a 3-bedroom annex.

Cost: £3.5m

Corporate Resources Lifelong Learning Key Achievements Highlights



Agile Programme Victoria Gate Woking Borough

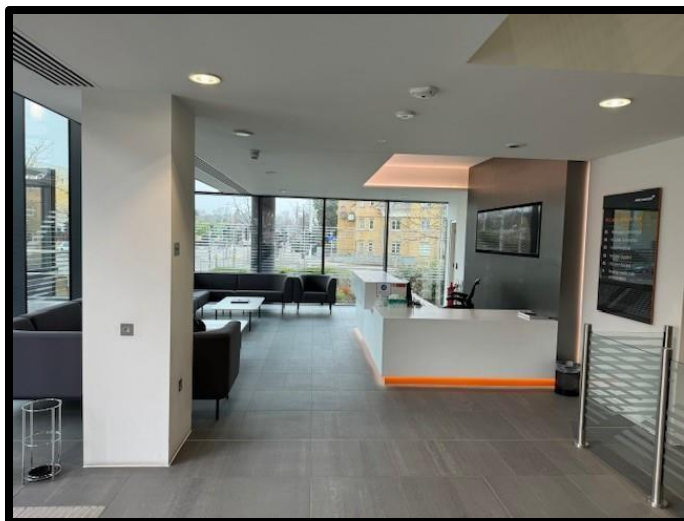
Contractor: Main contractor TBA currently In procurement

Commencement: Main contractor for structural works Phase 2 commences in Dec 24.

Proposed completion: Phase 1 construction works scheduled for PC on 7th October. Phase 2 currently targeted to complete in Spring 25.

Purpose: Site Works MEP C furniture fit out, structural work to include a lift from ground to basement level. Working to move around 2000 staff.

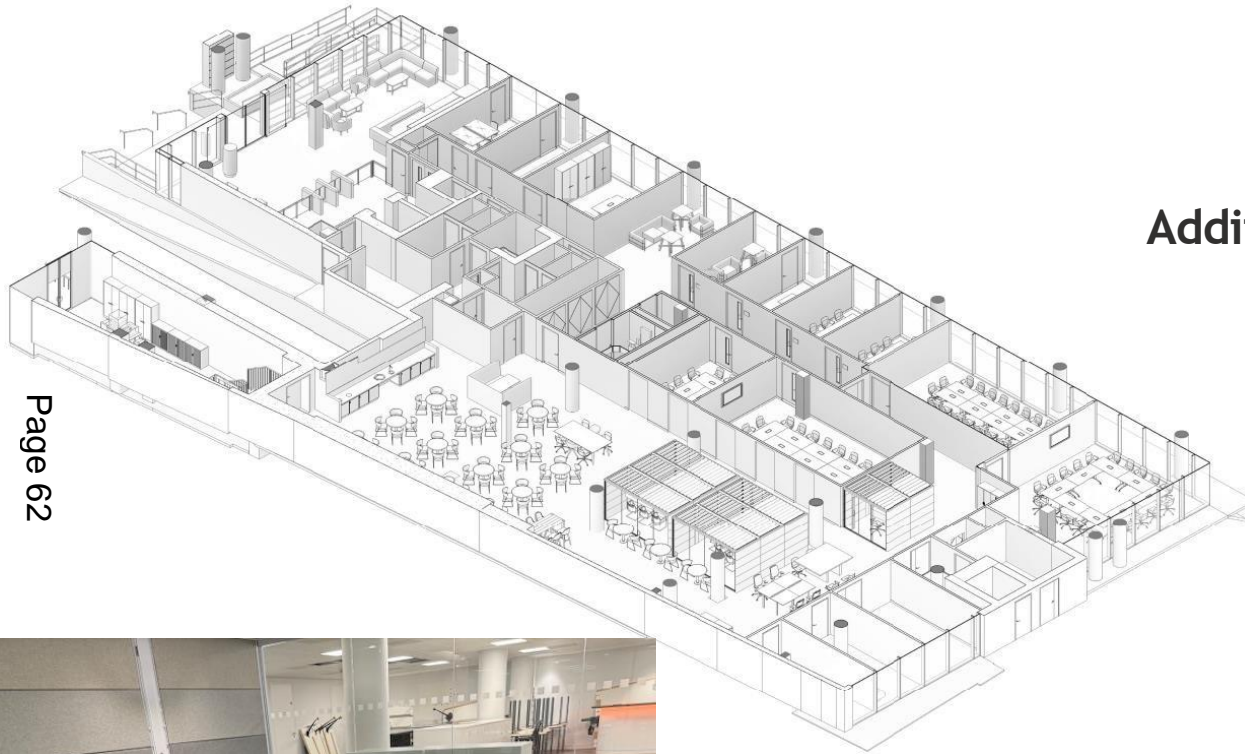
Cost: £6.5m (Endorsed by Property Panel to go to Capital Programme Panel Oct 24)



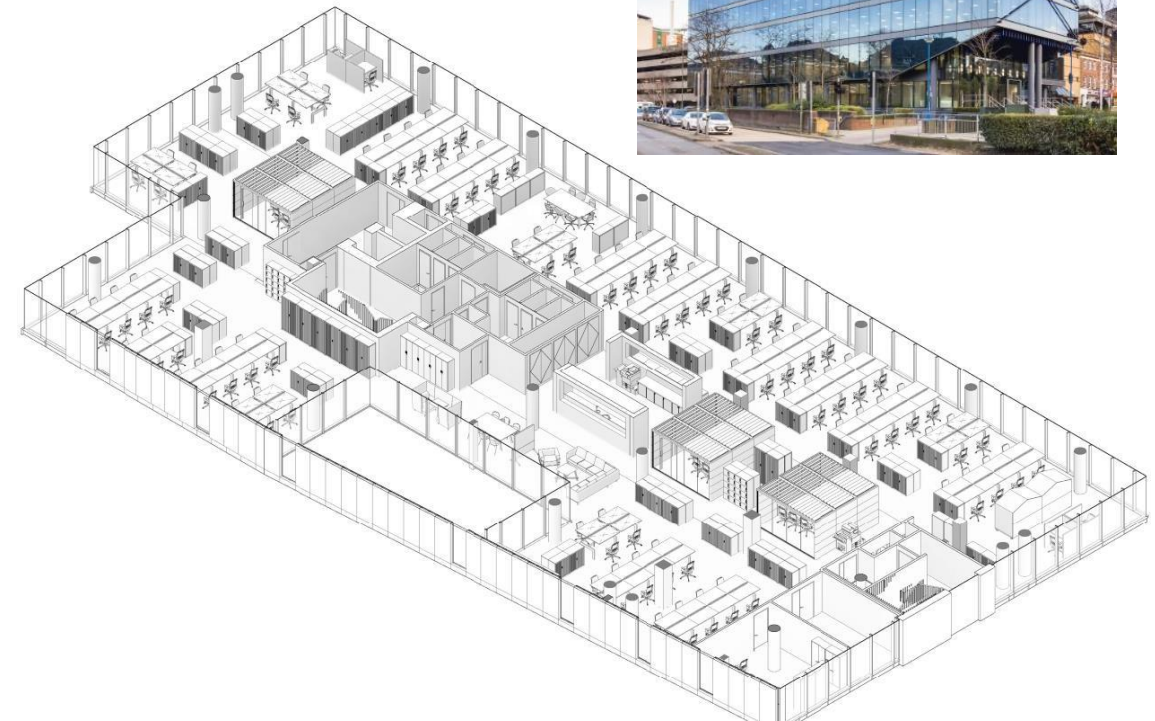
Corporate Resources Lifelong Learning Key Achievements Highlights



**Agile Programme
Victoria Gate
Woking Borough
Additional Photos Layout**



Page 62



Corporate Resources Lifelong Learning

Key Achievements Highlights



Page 63



Surrey Fire's Rescue Service Reigate Fire Station Reigate and Banstead Borough

Contractor: Neilcott Construction Limited

Commencement: October 2024 - decant completed

Target completion: October 2025

Purpose: Decant from temporary fire station (see photos) to temp facility to allow vacant possession. Redevelopment of fire station facilities.

Cost: £8.1m

Corporate Resources Lifelong Learning

Key Achievements Highlights



Libraries Transformation Programme Woking Library Woking Borough

Contractor: Neilcott Construction Ltd

Commencement: July 2024

Target completion: December 2024

Purpose: Refurbish and enhance the existing library facilities.

Cost: £2.1m

Corporate Resources Lifelong Learning

Key Achievements Highlights

Hubs Programme Weybridge Hub Elmbridge Borough

Contractor: Neilcott Construction Limited

Commencement: June 2024

Target completion: Phased Occupation from April 2025.

Purpose: The Weybridge Hub will include a modern library, a space for targeted youth support, accessible community spaces for hire and other commercially lettable space. External building refurbishment, expansion of ground floor and extension of rear courtyard and a full refit of all interiors.

Cost: £8.7m



Corporate Resources Lifelong Learning

Key Achievements Highlights



Highway Depots Merrow Salt Barn Guildford Borough

Contractor: Ed Burton Contractors Ltd

Commencement: April 2024

Target completion: October 2024

Purpose: Construction of a new Salt Barn for Merrow Depot to store salt for the gritting of Surrey's busy roadways infrastructure. The barns are designed to keep the salt in perfect condition and the round structures ensure there is no wastage. Tall doorways to enable the off-loading of salt deliveries to take place within the barns.

Cost: £1.7m



Corporate Resources Lifelong Learning

Key Achievements Highlights



Highway Depots Godstone Salt Barn Tandridge District

Contractor: Ed Burton Contractors Ltd

Commencement: August 2024

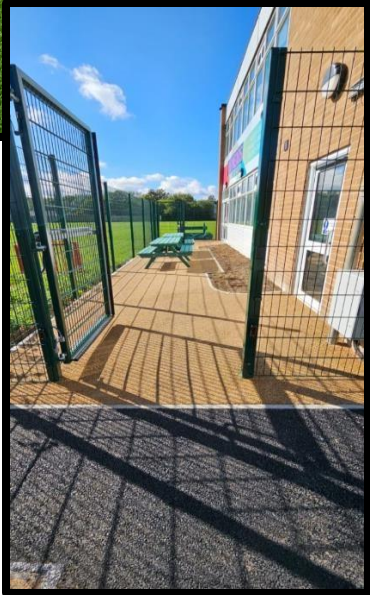
Proposed completion: March 2025

Purpose: Construction of a new Salt Barn for Godstone Depot to store salt for the gritting of Surrey's busy roadways infrastructure. The barns are designed to keep the salt in perfect condition and the round structures ensure there is no wastage. Tall doorways to enable the off-loading of salt deliveries to take place within the barns.

Cost: £2.5m



SEND/Alternative Provision Key Achievements Highlights



**SEND Programme
Philip Southcote
Main Site s Hydrotherapy Pool
Elmbridge Borough**

Contractor: Morgan Sindall

Commencement: October 2023

Proposed completion: February 2025

Purpose: Increased secondary provision by 1FE with 7 new classrooms and supporting spaces. Construction of a new block, demolition of existing modular C temporary accommodation. New staff car parking

Cost: £11.1m

SEND/Alternative Provision Key Achievements Highlights



SEND Programme Philip Southcote Satellite site Epsom s Ewell Borough

Contractor: Colours Construction Ltd

Commencement: May 2024

Completion: August 2024 now in 12 months defects liability period.

Purpose: Internal refurbishment and adaption of existing capacity for a new 20 place specialist satellite provision for Philip Southcote for children with Moderate Learning Difficulties (MLD)

Cost: £1.3m



SEND/Alternative Provision Key Achievements Highlights



**SEND Programme
St Matthews CofE School
Reigate s Banstead Borough**

Contractor: TG Escapes Ltd

Commencement: Jan 2024

Completion: July 2024 currently in 12 months defects liability period.

Purpose: New build SEN Block extension for additional mainstream units for Autistic children.

Cost: £1.8m

SEND/Alternative Provision Key Achievements Highlights



SEND Programme Stepgates Community School Runnymede Borough

Contractor: TG Escapes

Commencement: March 2024

Completion: September 2024 - currently
in 12-month defects liability period

Purpose: Remodel and refurbishment and
new build extension of Stepgates
community school for 8 additional
mainstream SEN unit places (21 overall).

Cost: £2.6m

SEND/Alternative Provision Key Achievements Highlights



Page 72



SEND Programme The Abbey School Waverley Borough

Contractor: OCD Construction Ltd

Commencement: August 2023

Completion: September 2024- currently in 12-month defects liability period

Purpose: Remodel and new build extension for permanent accommodation for 60 additional specialist school places for children aged 11-16 years with Moderate Learning Difficulties (MLD).

Cost: £7.4m

SEND/Alternative Provision Key Achievements Highlights

Page 73



Freemantles School Woking

Contractor : Morgan Sindall

Completed: October 2023, defects liability period to be completed end of October 2024

Purpose: Secondary C further education facility has expanded the school's accommodation by a total of 72 additional places for children with complex social communication needs.

Cost £16.1m

SEND/Alternative Provision Key Achievements Highlights



SEND Provision Freemantles School Satellite site Former Ripley Primary School Guildford Borough

Contractor: Colours Construction Ltd

Completed: August 2024, currently in 12-month defects liability period.

Purpose: Refurbishment and adaptation of the Former Ripley Primary School site to provide temporary satellite provision for Freemantles School creating 54 additional specialist school places for autistic children with complex needs.

Cost £0.9m